

Accord Controls
A Unit of Flowserve Corporation
www.accord-controls.com

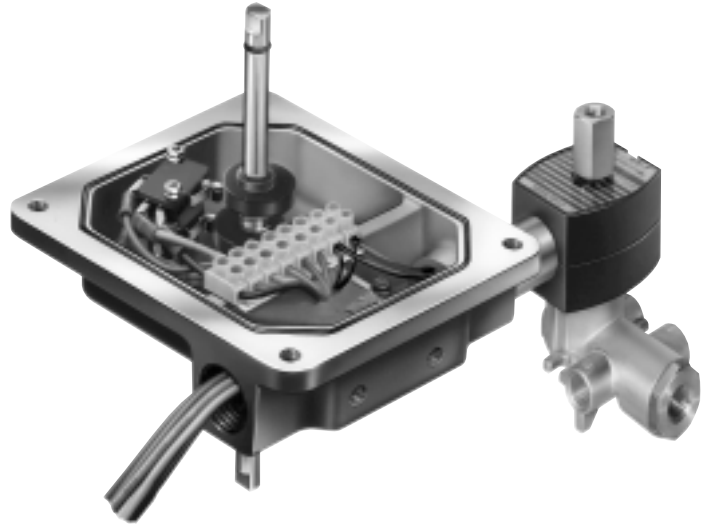
765 South 100 East
Provo, Utah 84606
Phone: 801 373 4576

1978 Foreman Dr.
Cookville, TN 38501
Phone: 931 432 4021

Asco® Pilot Solenoid Valve Options

Introduction:

UltraSwitch™ position indicators are available with a factory-installed, pre-wired Asco® pilot solenoid valve. Accord will provide the required pipe bushing, install the solenoid valve, wire the solenoid power leads to our internal terminal strip, and wire the ground lead to our ground terminal. This complete package is UL listed and CSA approved for the same hazardous locations as the particular switch configuration.



How to Order:

All UltraSwitch™ figure numbers include a meaningful character for Asco® pilot solenoid valves. Referring to the Table of Contents page and the following chart, simply specify the appropriate meaningful character.

Note: Accord will assume 120 VAC coils unless specified.

Ascor Figure	Configuration	C_v (Supl.-Exh)	Watts (AC-DC)	Description	Meaningful Character
EF8320G184	3-Way - 1/4"	0.12	10.1 - 11.6	General Service	A
EF8321G001	3-Way - 1/4"	0.8 - 1.2	6.1 - 10.6	Quick Exhaust	B
EF8316G064	3-Way - 1/2"	4	6.1 - 10.6	Air & Water	C
EF8316G074	3-Way - 3/4"	5.5	6.1 - 10.6	Air & Water	E
EF8345H003	4-Way - 1/4"	0.09	10.1 - 11.6	General Service	F
EF8342C001	4-Way - 1/4"	0.7	20 - N/A	General Service	G
EF8344G072	4-Way - 3/8"	1.4 - 2.2	10.1 - 11.6	General Service	H
EF8344G074	4-Way - 1/2"	1.4 - 2.2	10.1 - 11.6	General Service	J
EF8344G076	4-Way - 3/4"	5.2 - 5.6	10.1 - 11.6	General Service	K

Note: All 3-Way Configurations are Normally Closed