

Flowserve Corporation
Flow Control Division
www.flowserve.com

1350 N. Mountain Springs Parkway
Springville, Utah 84663-3004
Phone: 801 489 8611

1978 Foreman Dr.
Cookeville, TN 38501
Phone: 931 432 4021

NAMUR Visual Indicator

Description:

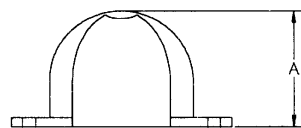
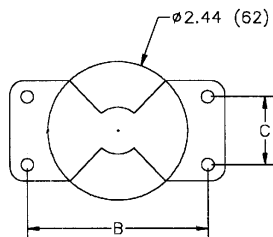
Automax visual indicators provide visible position confirmation for “on-off” valve actuators. These indicators feature “green open” and “red closed” color schemes for intuitive viewing. Our NAMUR visual indicator may be bolted directly to any actuator conforming to NAMUR standards for actuator pinion height and bolt hole location/size. Durable polycarbonate construction provides years of trouble-free service.



Principle of Operation:

Automax visual indicators include a black dome with clear windows arranged 180 degrees from one another. A red-and-green rotor, attached to the actuator shaft, turns under the dome. Green windows indicate open, red windows indicate closed.

Dimensions:



	A	B	C
28	2.00 (51)	3.150 (80)	1.181 (30)
38	2.00 (51)	3.150 (80)	1.181 (30)
313	2.36 (60)	5.118 (130)	1.181 (30)
513	2.75 (70)	5.118 (130)	1.181 (30)

All Dimensions are in inches (mm)

How to Order:

Referring to the chart below, simply specify the appropriate kit number.

NP		NAMUR Indicator Kit
	28	20 mm Pinion x 80 mm Bolt Spacing
	38	30 mm Pinion x 80 mm Bolt Spacing
	313	30 mm Pinion x 130 mm Bolt Spacing
	513	50 mm Pinion x 130 mm Bolt Spacing
	A	#10-24 Bolting
	B	#10-32 Bolting
	L	M5-.8 Bolting

Example: NP28A