

# Actuation and Control Solutions



Flow Control Division

Flow control solutions for the world at work.



## Flow Control Division

Whatever the flow control requirement, the Flowserve Flow Control Division has the systems, the products, and the experience to help your processes run smarter, safer, and more efficiently. Featuring the industry's most complete range of actuators, positioners, controls, switches and accessories—complemented by our comprehensive R&D, engineering, and global support services—Flowserve provides every customer with a one-stop solution to their flow control needs.

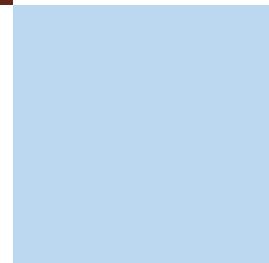
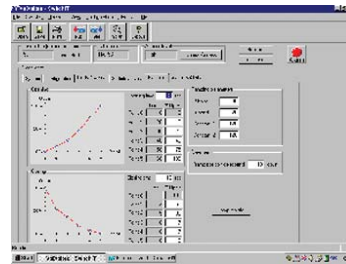
### Brands

Accord
Automax
Limatorque
Logix
Norbro
PMV
Worcester Controls

	Actuators				Positioners				Other	
	Mechanical	Electric / Electronic	Pneumatic	Hydraulic	Electro-pneumatic	Digital	Intelligent	Pneumatic	Switches	Controller
Accord		■	■	■	■	■	■	■	■	■
Automax		■	■	■	■	■	■	■	■	■
Limatorque	■	■	■							
Logix					■	■	■			■
Norbro		■	■	■		■				
PMV					■	■	■	■	■	
Worcester Controls		■	■	■	■	■	■	■	■	

## With a range of intelligent solutions...

From easy-to-use sizing software to our unique SoftTools, StarTalk and ValXplore custom configuration software to electronic positioners and level switches to remotely controlled, fully-automated electric, hydraulic, and pneumatic actuators, Flowserve offers a range of intelligent flow control solutions for every application. Couple the Flowserve range of control solutions with real-time system analysis, predictive maintenance, and remote service capability, and you will find end-to-end intelligence that has no equal in the industry.



# We add automation to process...

Process automation is driven by the need for increased productivity, cost reduction, and enhanced safety. The Flowserve range of valve automation and control solutions is designed to provide valve manufacturers, contractors, facility managers, and re-fitters with everything needed to bring the latest in linear quarter-turn and multi-turn control valve automation to their plant or process.



## ...and process to control

Featuring seamless direct-to-host integration with all the major DCS, PLC and PC-based automation systems, foundation fieldbus networking, and robust open-standards technology, the Flowserve customer gains unmatched interoperability to take advantage of the very latest in automation systems integration and protocols. Active partnerships with all the major automation systems vendors ensure that your control and automation project will have smooth commissioning and long-term support.





# Actuation & Control Solutions

Flow Control Division



◀ **Accord** positioners and limit switches provide complete valve automation control, and are available in a wide range including explosion-proof and sanitary applications.



◀ **Norbro** pneumatic and electric actuators together with a range of positioners and ancillary flow control equipment.



◀ **Logix** digital positioners designed for fast, accurate control using various fieldbus protocols. Easily calibrated and commissioned without the need of a configurator or other software.



◀ **Limatorque** products include multi-turn and quarter-turn electric actuators and valve control networks, automating valves in some of the harshest environments imaginable.



◀ **Automax** supplies a range of valve automation systems including rack & pinion, scotch-yoke and electric actuators, positioners, switches and accessories, and automation packages.



◀ **PMV** is a leading manufacturer and supplier of valve positioners to the world's largest control valve companies.



◀ **Worcester Controls** electric and pneumatic actuators and computer interface components for analog or digital control and communication.



## Flow Control Division

**Your global source of valves, automation solutions, service, and support from the world's flow management leader.**

Flowserve is the world's premier provider of industrial flow management services. The Company produces engineered pumps, precision mechanical seals, automated and manual quarter-turn valves, control valves and actuators, and provides a range of related flow management services, primarily for the process industries. Flowserve operates in over 30 countries through three divisions: the Pump Division, the Flow Control Division, and the Flow Solutions Division.

To contact your nearest Flowserve automation and control supplier, visit [www.flowserve.com](http://www.flowserve.com) or email [fcdinfo@flowserve.com](mailto:fcdinfo@flowserve.com)