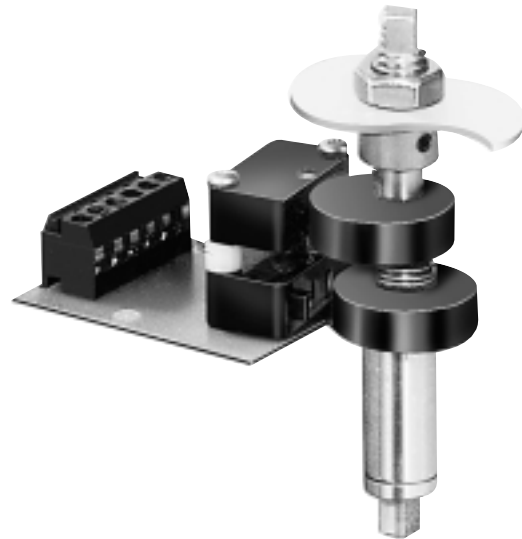


APEX Limit Switch Options

Introduction:

APEX Limit Switch options allow reliable valve indication when installed in APEX positioners. Switches are normally used to indicate full open and full closed positions. We offer three limit switch options. These options may be factory installed, or may easily be added in the field.



Applications:

Our APEX Limit Switch options may be used in any non-hazardous location (for hazardous applications, ask your representative about top-mounting our UltraSwitch™ XL explosion proof limit switch enclosure). Corrosion resistant materials assure long life in corrosive environments.

Features:

1. Quick-Set cams are spring-loaded and splined for tool-free adjustment.
2. Quick-Cams allow 4 degree adjustment.
3. Switch is pre-wired to print circuit boards with detachable terminal blocks. This makes installation and hookup easier.
4. APEX 5000 housing has integral 1/2" conduit connection.

Flowserve Corporation
Flow Control Division
www.flowserve.com

1350 N. Mountain Springs Parkway
Springville, Utah 84663-3004
Phone: 801 489 8611

1978 Foreman Dr.
Cookeville, TN 38501
Phone: 931 432 4021

Specifications:

Option K: (2) SPDT Mechanical Switches

Form C
10 Amps at 125 VAC
5 Amps at 250 VAC
1/2 Amp at 125 VDC
1/4 Amp at 250 VDC



Option M: (2) SPDT Proximity Switches

Form A
0.35 Amp at 140 VAC
1/4 Amp at 200 VDC
1/2 Amp at 100 VDC
1 Amp at 50 VDC
Maximum Load: 50 Watts Resistive



Option N: (2) SPDT Proximity Switches

Form C
1/4 Amp at 28 VDC
MOV and Fuse Protected (Spare Fuse Included)
Maximum Load: 3 Watts Resistive



How to Order:

APEX figure numbers have optional meaningful characters for limit switch options. Referring to the table of contents page, simply specify the character corresponding to the proper switch option (characters are also shown below). To order a field installation kit, simply specify the part number shown in the table below.

Limit Switch Option	Meaningful Character	Field Installation Kit Part Number*
SPDT mechanical	K	KMS_K
SPST proximity	M	KMS_M
SPDT proximity	N	KMS_N

***Note:** Fill in the blank with desired cam option (see PS0007-CV).
For standard linear cam, use "A" (example: KMSAK).