

PC Series Transparent Cover UltraSwitch™

Introduction:

The PC Series UltraSwitch™ is designed to meet NEMA 4 and 4X standards and is pending U.L. listing and C.S.A. certification to nonincendive standards for Division 2 hazardous locations. This position indicator features “quick-set” tool-free adjustment cams for ease of position sensing adjustment. The PC comes standard with a Pharos™ position indicator or a flat top for a lower profile. Many switch options can be installed to meet each application’s needs. Each integral switch is pre-wired to a multi-point terminal block. A minimum of two spare terminals are provided for external accessories to eliminate costly junction boxes. The enclosure includes two 3/4" N.P.T. conduit connections for easy wiring access.



Applications:

The PC enclosure is manufactured from high-strength, transparent resin. It will provide accurate and reliable weathertight position signaling. Although many switch options are available, this series is designed to be used with proximity switches featuring LED indication. The switch LED's provide visual confirmation of switch function at the enclosure. This watertight position indicator will mount to any Rack and Pinion, Scotch Yoke, Vane, or other rotary actuator type.

The PC may be installed on any actuator conforming to the NAMUR standard for accessory mounting bolt pattern and pinion height without a coupler (see Bulletin PS0037-CV). This reduces deadband and is less expensive. Automax also offers a full line of mounting hardware for non-NAMUR actuators.

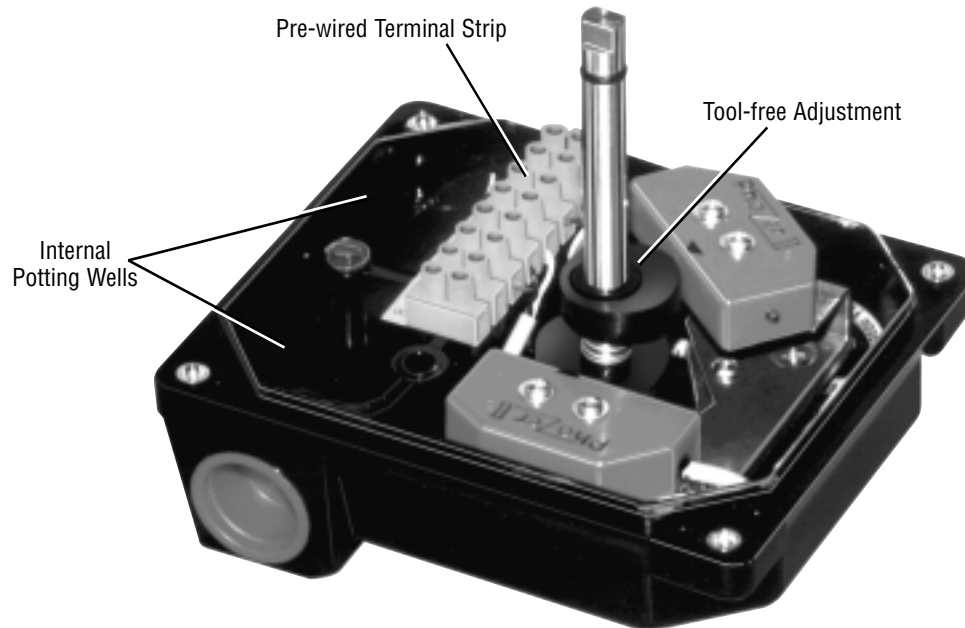
Durable construction and corrosion resistant materials provide protection against the toughest applications in all process industries including:

1. Chemical and Petrochemical
2. Power
3. Food and Beverage
4. Pharmaceutical
5. Municipal and Wastewater Treatment

Flowserve Corporation
Flow Control Division
www.flowserve.com

1350 N. Mountain Springs Parkway
Springville, Utah 84663-3004
Phone: 801 489 8611

1978 Foreman Dr.
Cookeville, TN 38501
Phone: 931 432 4021

**Features:**

1. **Quick-Set Cams.** Tool free adjustment of switch trip point is accomplished simply by pushing or pulling the cam and rotating it to the new position. Cams are spring-loaded and splined to maintain switch setting in any installed position. They are fully adjustable through 360° in 4° increments.
2. **Tough, Transparent Cover.** Clear, polycarbonate cover permits visual switch inspection without removal. Exposed metallic surfaces are either stainless steel or nickel-plated brass for corrosion resistance.
3. **Captive Cover Screws** permit calibration without potential for losing screws.
4. Optional **Pharos™ Visual Position Indicator** provides fully adjustable, high-contrast, full-angle viewing of valve position.
5. Numbered, pre-wired Multi-point **Terminal Strip** for easy hookup. Two spare terminals are provided with every switch to accommodate additional field devices, such as solenoid valves, to eliminate the cost of any additional junction boxes.
6. Each UltraSwitch™ enclosure includes a **Detailed Wiring Diagram** permanently attached inside the cover.
7. **Internal Grounding Screw** for ground wire hookup.
8. **Internal Potting Wells.** Within the housing at the conduit entries are two potting wells available for factory sealed leads. They may be filled with conduit potting compound or RTV silicone sealant to prevent the entrance of corrosive vapors or fluids.

Flowserve Corporation
Flow Control Division
www.flowserve.com

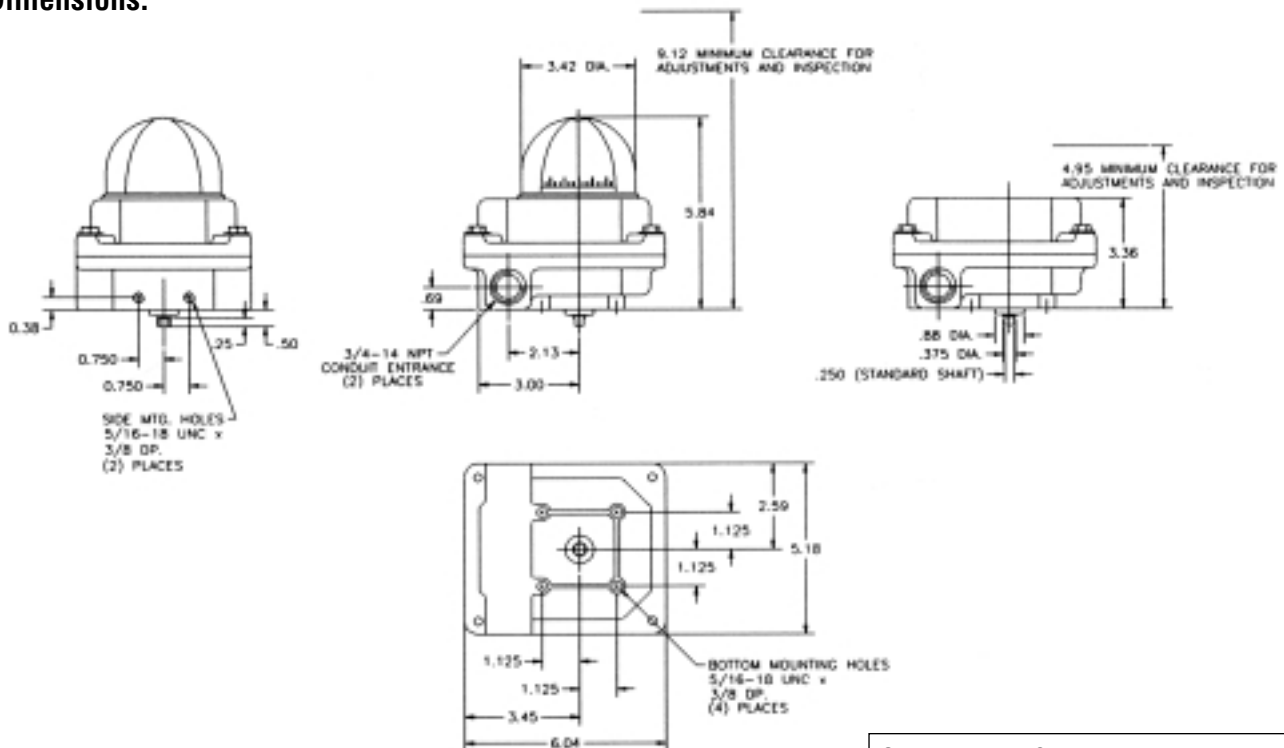
1350 N. Mountain Springs Parkway
Springville, Utah 84663-3004
Phone: 801 489 8611

1978 Foreman Dr.
Cookeville, TN 38501
Phone: 931 432 4021

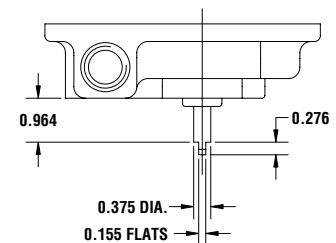
Materials of Construction:

Part	Materials
Housing/Cover	Polycarbonate
Shaft	Stainless Steel
Cams/Splines	Nylon
Pharos Dome and Rotor	Polycarbonate
Terminal Block	Nylon-Buchanan TBS Series
Internal Brackets	Stainless Steel or Plated Steel
All Internal Fasteners	Stainless Steel or Plated Steel
All External Fasteners	Stainless Steel
Threaded Inserts	Nickel-Plated Brass

Dimensions:



Optional NAMUR Shaft



Flowserve Corporation
Flow Control Division
www.flowserve.com

1350 N. Mountain Springs Parkway
Springville, Utah 84663-3004
Phone: 801 489 8611

1978 Foreman Dr.
Cookeville, TN 38501
Phone: 931 432 4021

Principles of Operation:

The PC Series UltraSwitch™ is designed for use with any industrial rotary actuator in weathertight locations. It indicates open and closed valve positions by completing electrical circuits to remote locations. The PC series may include an analog feedback device (see Bulletin PS0050-CV) to indicate continuous position for modulating packages. Local visual indication is accomplished with the Pharos™ Rotary Indicator.

Hazardous Location Approvals:**Mechanical Switches
Types 1, 2, & 3**

No hazardous location approval

**Proximity Switches
Types 4, 5, 6, all Phazer, R & U**

Division 2 pending

***Note:** When using hermetically sealed proximity switches, a conduit seal is not required (Division 2 only).*

Temperature Range:

-40 to 180 Deg. F

-40 to 250 Deg. F: Consult Factory

Representative: