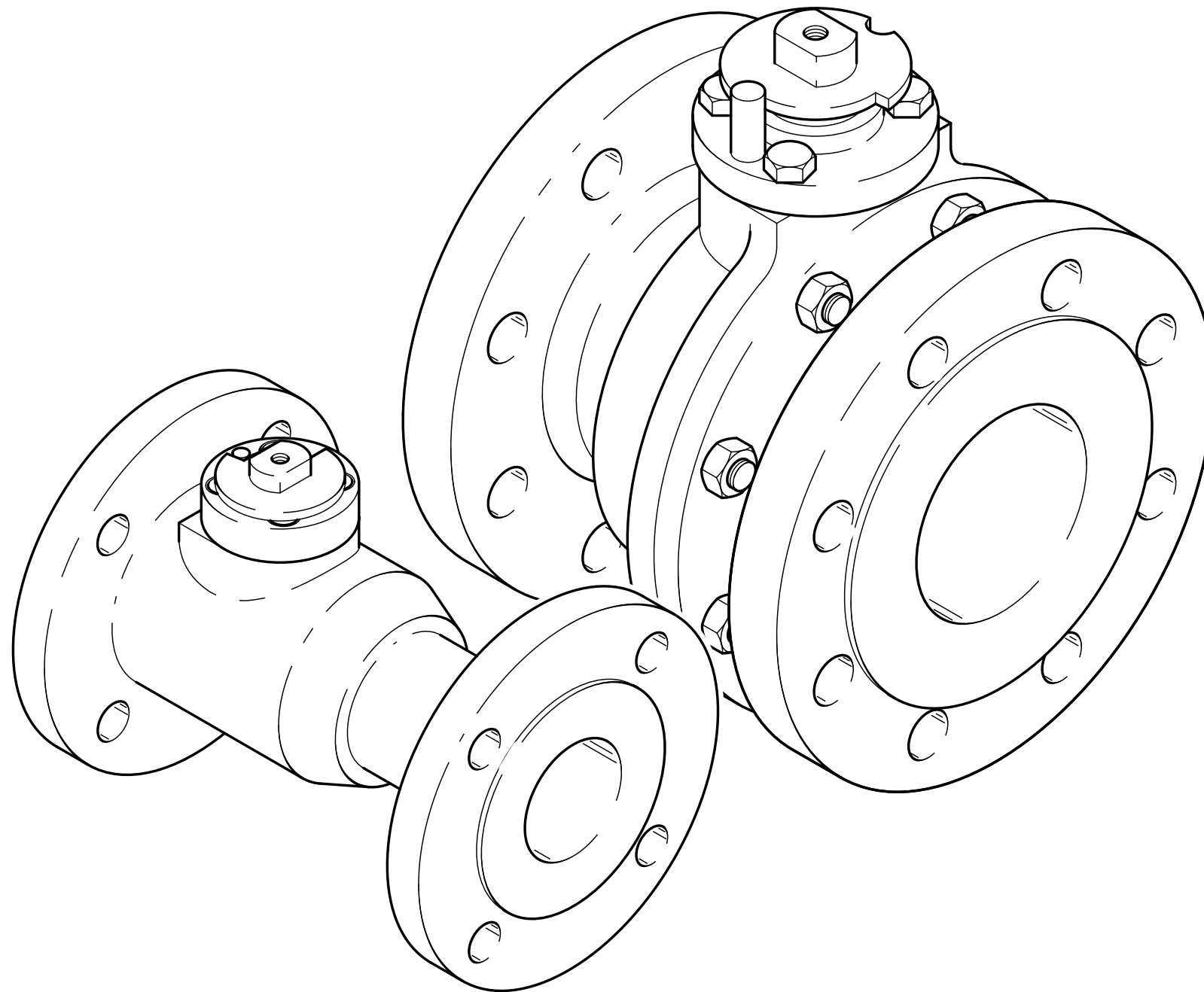


Service Manual



Types:

EK/71

EK/74

FK/75

FK/76

FK79

FK/79/F

FK/492

HK/35

MW/22

Table of contents

Designed Use 3

- Application Areas3
- Design3
- Installation3
- Impermissible Operating Procedures.....3
- Maintenance3

Safety Information..... 3

Safety Standards 5

Pressure-Temperature Diagrams 5

Delivery/Storage 5

- Check on Delivery.....5
- Storage of the Ball Valves5

Transport 6

Installing the Flanged Connection 7

- Installing the Ball Valve.....7
- Connecting the first Flange.....7
- Connecting the second Flange7

Installing the Welding Connection 8

- Installing the Ball Valve.....8
- Welding the Connections.....8

Start-up 9

- Actuating the Ball Valve.....9
- Open Position of the Ball Valves.....9

Maintenance 10

- Type EK/7110
 - Disassembly10
 - Exchanging the Stem Sealing.....10
- Type FK/7411
 - Disassembly11
 - Exchanging the Stem Sealing.....11
- Type FK/7512
 - Disassembly12
 - Exchanging the Stem Sealing.....12
- Type FK/7613
 - Disassembly13
 - Exchanging the Stem Sealing13
 - Reassembly14
- Type FK/78.....14
 - Disassembly14
 - Exchanging the Stem Sealing14
 - Reassembly14
- Type FK/79.....15
 - Disassembly15
 - Exchanging the Stem Sealing15
- Type FK/79/F16
 - Disassembly16
 - Exchanging the Stem Sealing16
- Type FK/492.....17
 - Disassembly17
- Type HK/3518
 - Disassembly18
 - Exchanging the Stem Sealing18
 - Reassembly18
- Type MW/22.....19
 - Disassembly19
 - Reassembly19

Accessories 20

- Stuffing Box Assembly20
 - Re-tensioning the Seal20
 - Changing the Seals20
- Drain Plug21
- Drain and Ventilation Safety Plug.....21
- Supplementary Equipment22
 - Valve Actuators (Adjusting Range 90°)22
 - Position Control Systems22
 - Gearbox with Hand Wheel22
 - Position Limit Switch22
 - Underfloor Fittings22
 - Metal Seals22
 - Safety Devices22
 - Forced Shut-off Circuits.....22
 - Safety Control Circuits.....22
 - Heating Jackets.....22
 - Secondary Sealing Systems22

Designed Use

Series EK, FK and HK ball valves are used as shut-off devices in pipelines associated with processing, handling and transporting liquid or gaseous as well as solid materials.

Application Areas

- Chemical industries
- Petrochemical industries
- Gas industries

Design

- Type EK ball valves have a unibody end-entry with an axial screw-type connection.
- FK and HK ball valves have a two-piece split-body design with flanged connection in between the two halves.

Installation

The ball valves can be installed in pipelines by means of flanged connections or by welding.

Material requirements for welding must be ascertained from the manufacturer and must comply with customer specifications.

The ball valves are designed for a normal load during service in pipelines. Under certain preconditions, the ball valves can also be used for more severe operating conditions, although in such cases, the manufacturer should be consulted in advance.

Impermissible Operating Procedures

To exclude any harmful effects on the seals, the substance to be used must comply with the ARGUS technical specifications.

Consult ARGUS beforehand if necessary.

The combination of medium temperature and pressure are decisive factors for the choice of sealant materials.



Danger!

It is essential that the limit values are not exceeded; these values can be taken from ARGUS diagrams.



Warning!

The specified service pressures and temperatures must not be exceeded, even as individual loads.



Caution!

The user is responsible for ensuring compliance with the guidelines, regulations, safety standards and laws applicable to the use of these ball valves.

Maintenance

Ball valves are maintenance-free. It is advisable, however, to actuate them at least once or twice a year.

Safety Information



Information

Please read the safety instructions carefully!

General instructions

Installation and maintenance may be performed only by trained, qualified personnel.

The media to be used must comply with the ARGUS technical specifications in order to exclude any harmful effects on the seals. Contact ARGUS for further information.



Danger!

It is essential that the limit values are not exceeded; these values can be taken from ARGUS diagrams (see Section Designed Use).



Warning!

The specified service pressures and temperatures must not be exceeded, even as individual loads (see Chapter Designed Use).



Caution!

The user is responsible for ensuring compliance with the guidelines, regulations, safety standards and laws applicable to the use of these ball valves (see Chapter Designed Use).



Danger!

Local safety regulations must be complied with for transport to the place of installation. Make sure that the valves cannot tilt or slip in any way (see Chapter Transport).



Warning!

After installation, the pipeline and ball valve must be rinsed through before the ball valve is actuated (see Chapter Installing the Flanged Connection).



Danger!

The local welding regulations and specifications must be complied with when carrying out welding work (see Chapter Installing the Welding Connection).



Caution!
Use temperature measuring strips to check that the temperature does not rise beyond the permissible limits (100°C). The strips must be fitted to the connection near the soft inserts (see Chapter Installing the Welding Connection).



Caution!
The temperature measurement strip must be monitored constantly throughout the welding work (see Chapter Installing the Welding Connection).



Caution!
If any change of colour is noticed, the welding work must be interrupted immediately and the weld allowed cooling (see Chapter Installing the Welding Connection).



Caution!
Before start-up of the ball valve, the pipeline must be rinsed (see Chapter Installing the Welding Connection).



Warning!
Before start-up of the ball valve a leak test must be performed (see Chapter Start-up).



Warning!
The ball valve must be set to the OPEN position in order to avoid any damage (see Chapter Start-up).



Danger!
For safety reasons, the position of the wrench must clearly reflect the OPEN position of the ball valve (see Chapter Start-up).



Danger!
Do not disassemble the valve under pressure. Before disassembly operate valve so that possible pressure behind the ball may escape (see Chapter Maintenance).



Caution!
Do not loosen the fixing nuts (see Chapter Stuffing Box Assembly).



Danger!
The ball valve must be depressurized! To release encaptured pressure, turn ball. Take care of any hazardous materials that might escape! Risk of explosion, fire and acid burn! (see Chapter Stuffing Box Assembly)



Danger!
De-pressurize the ball valve by turning the ball at 90° before removing drain and ventilation plug (see Chapter Drain Plug).



Danger!
Care must be taken when hazardous materials are involved! Risk of explosion, fire and acid burn! (see Chapter Drain Plug)



Warning!
The plug may only be opened but not unscrewed by force (see Chapter Drain and Ventilation Safety Plug).



Warning!
Keep away from the outlet! Risk of injury! See Chapter Drain and Ventilation Safety Plug.



Warning!
The medium is ejected sideways! See Chapter Drain and Ventilation Safety Plug.

Safety Standards

Depending on the type and pressure rating, ARGUS ball valves are designed to conform with national and international regulations, such as DIN 3357, AD and VdTÜV-Merkblätter, TRbF, TRGL, TRD, TRG, DVGW, BS 5351, API6D and ANSI B16.34.

Design certifications and DIN-DVGW certificates are available. The acceptance of the fittings is carried out according to DIN 3230 or specific customer requirements.

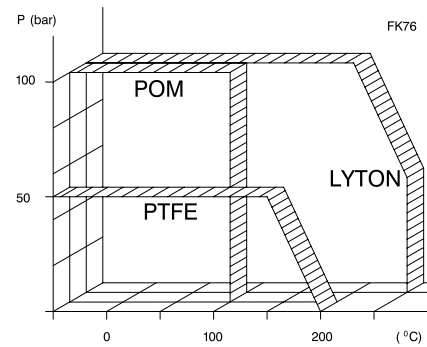
The reliability of fittings sealed with soft materials in case of fire, or even at temperatures above +600 °C is confirmed by the Fire-Safe Certificate and can be verified using BS 6755and/or API 607.

Authorized testing institutions such as TÜV, German Lloyd, BS, Lloyds Register, DNV, Bureau Veritas, etc., carry out further tests on behalf of ARGUS or customers at regular intervals.

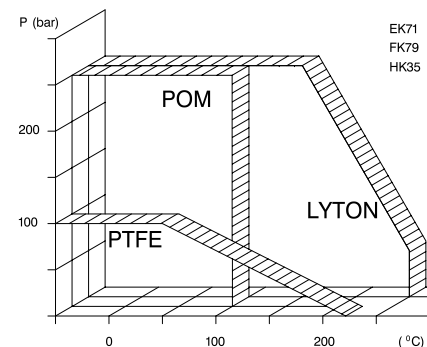
Compliance with Quality Assurance procedures under ISO 9001 was certified by DQS (German Society for Quality Assurance).



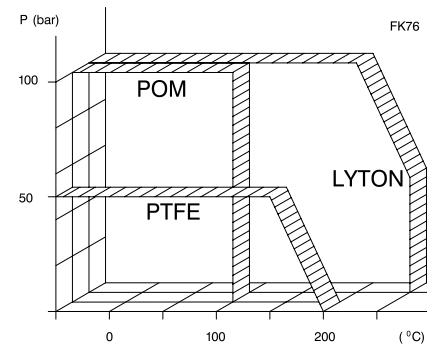
Pressure-Temperature Diagrams



FK76-01-001



0000-01-001



0000-01-002

Delivery/Storage

Check on Delivery

Lieferschein
delivery note
bordereau de livraison

Bestellnummer: 0 NR 5100003347-0010
order number:
numØrode commande:

ARGUS TYPE MADE IN GERMANY

PN/CLASS 40 DN EK-K 71

MATERIAL CS/CR-CR-TFE

PB/WOG TEMP °C +200

NO. 00559692 DAT. 300198 FABR. NO. 815189001

0 NR 5100003347-0010

0000-00-002

At delivery compare the order number on the delivery note with the number on the rating plate (see figure above). In addition check that the correct item has been delivered and that the delivery is complete.

Complaints submitted at a later date cannot be accepted.

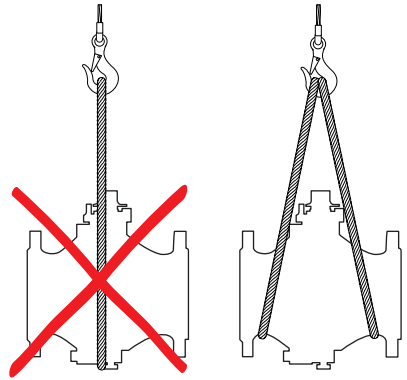
Storage of the Ball Valves

- Ball valve must be set to OPEN.
- Store ball valve in dry rooms.
- Protect ball valve against dirt.
- Protective caps must remain in position until the valves are finally installed.

Transport

**Danger!**

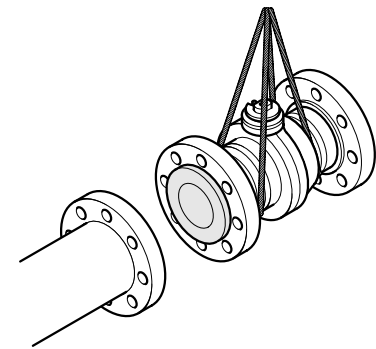
Local safety regulations must be complied with for transport to the place of installation.
Make sure that the valves cannot tilt or slip in any way (see figure below).



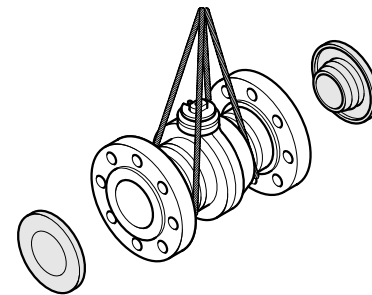
0000-00-002

The user is liable for any damage resulting from incorrect transport.

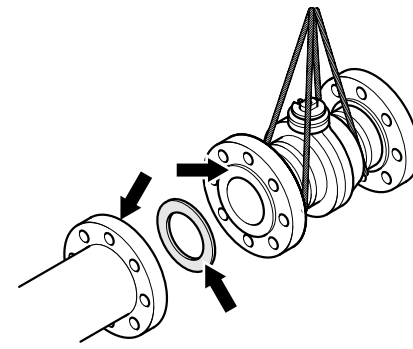
Installing the Flanged Connection



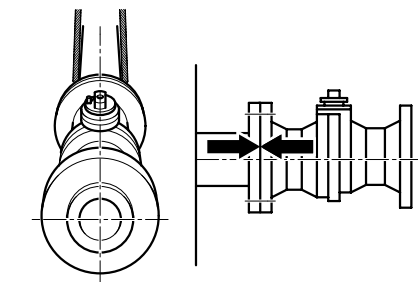
0003-00-002



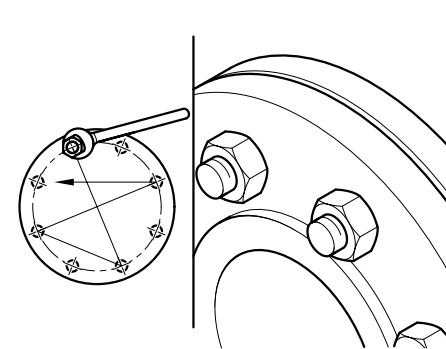
0003-00-004



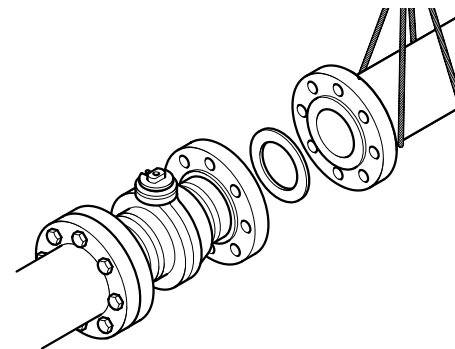
0003-00-001



0003-000-003



0005-00-001



0003-00-005

Installing the Ball Valve

- ▶ Transport the ball valve safely to the installation site using suitable hoisting gear dimensioned in accordance with the weight and size of the ball valve (Figure 0003-00-002).
- ▶ Remove protective caps (Figure 0003-00-004).
- ▶ Clean pipeline, seal and connecting flange (Figure 0003-00-001).

Connecting the first Flange

- ▶ Position the seal carefully.
- ▶ Secure the ball valve to the pipeline flange with a few bolts
- ▶ Check that the ball valve and gaskets are correctly located in relation to the pipeline flange.
- ▶ Check the alignment of the ball valve and pipeline (Figure 0003-000-003).
- ▶ Correct any discrepancies.
- ▶ Tighten the bolts crosswise (Figure 0005-00-001).

Connecting the second Flange

- ▶ The second flange is installed in the same way as the first flange (Figure 0003-00-005).
- ▶ Tighten the bolts crosswise (Figure 0005-00-001).
- ▶ After installation, check for any leaks.
- ▶ After installation, the pipeline and ball valve must be rinsed through before the ball valve is actuated.

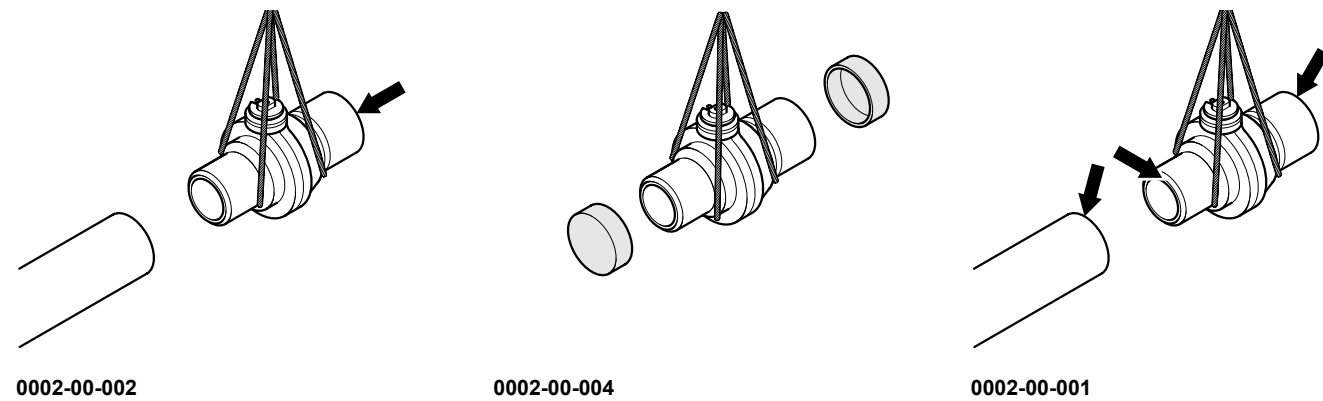


Warning!

After installation, the pipeline and ball valve must be rinsed through before the ball valve is actuated.

Installing the Welding Connection

Installing the Ball Valve

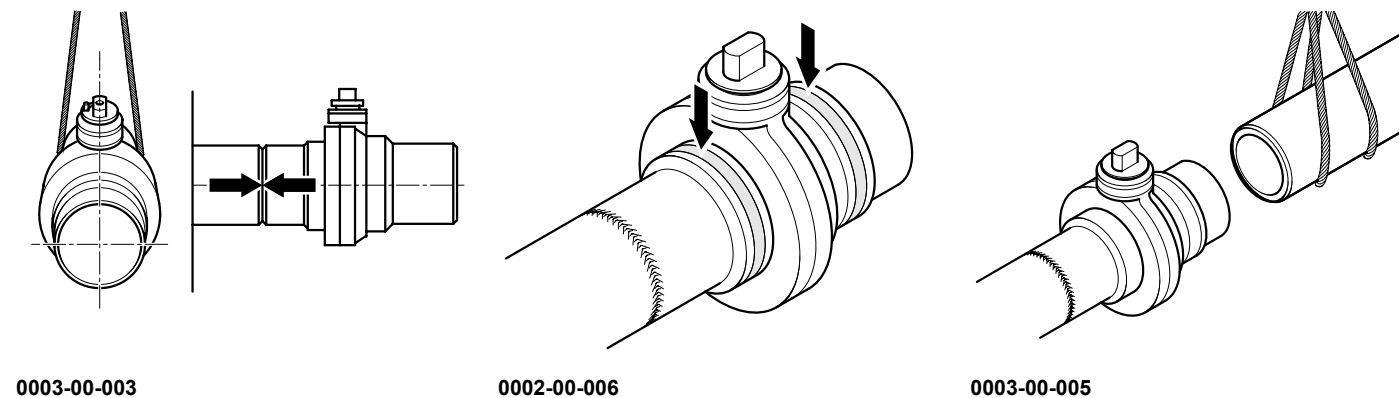


0002-00-002

0002-00-004

0002-00-001

Welding the Connections



0003-00-003

0002-00-006

0003-00-005



Danger!

The local welding regulations and specifications must be complied with when carrying out welding work.

- ▶ Transport the ball valve to the installation site using suitable hoisting gear dimensioned in accordance with the weight and size of the ball valve (Figure 0002-00-002).
- ▶ Remove the protective caps (Figure 0002-00-004).
- ▶ Clean the pipeline and connecting socket (Figure 0002-00-001).
- ▶ Remove any paint and rust around the weld area on the pipe and welded end of the ball valve. Ensure that a bright metal surface is obtained.
- ▶ Check that the ball valve is correctly positioned and aligned with the pipeline.

The permissible tolerances and specifications in accordance with the agreed proposed use for the ball valve must be complied with (Figure 0003-00-003).

Due to the short length of the welded ends, there is a risk that the soft inserts may be destroyed during the welding work.



Caution!

Use temperature measuring strips to check that the temperature does not rise beyond the permissible limits (100°C). The strips must be fitted to the connection near the soft inserts (Figure 0002-00-006).

These temperature measurement strips are designed so that, when a type-dependent temperature is reached, the colour irreversibly changes from white to black.



Caution!

The temperature measurement strip must be monitored constantly throughout the welding work.



Caution!

If any change of colour is noticed, the welding work must be interrupted immediately and the weld allowed cooling.

The temperature measurement strips can be stored at temperatures up to + 35 °C for an unlimited period of time and are resistant to oils, greases, water and steam.

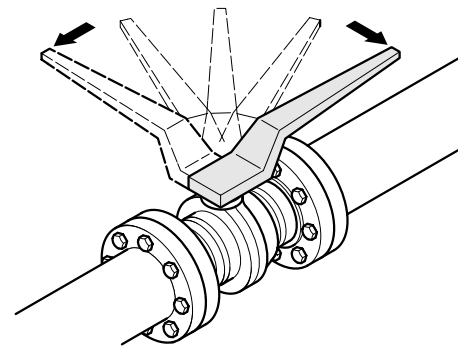
- ▶ Connect the second socket in the same way as the first one, as described before (Figure 0003-00-005).
- ▶ After installation, check for any leaks.



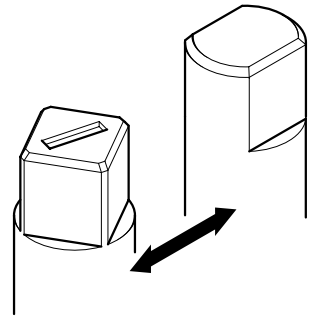
Caution!

Before start-up of the ball valve, the pipeline must be rinsed.

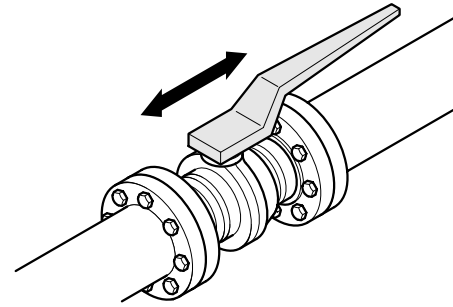
Start-up



0001-00-001



0001-00-002



0001-00-003



Warning!

Before start-up of the ball valve a leak test must be performed.

Before start-up of the ball valve, the pipe-line must be tested under pressure, rinse and dried.



Warning!

The ball valve must be set to the OPEN position in order to avoid any damage.

The flange connections must be checked again after rinsing.

- ▶ If necessary, retighten the bolts.

Actuating the Ball Valve

Only 2 positions (open/closed position with 90 °C turn) are allowed to prevent any damage to the seals (Figure 0001-00-001).

Ball valves are not control valves.

Open Position of the Ball Valves

The ball valves are open when the flat edges or visible notches on the stem are parallel to the direction of flow (Figure 0001-00-002).

When using a valve wrench:

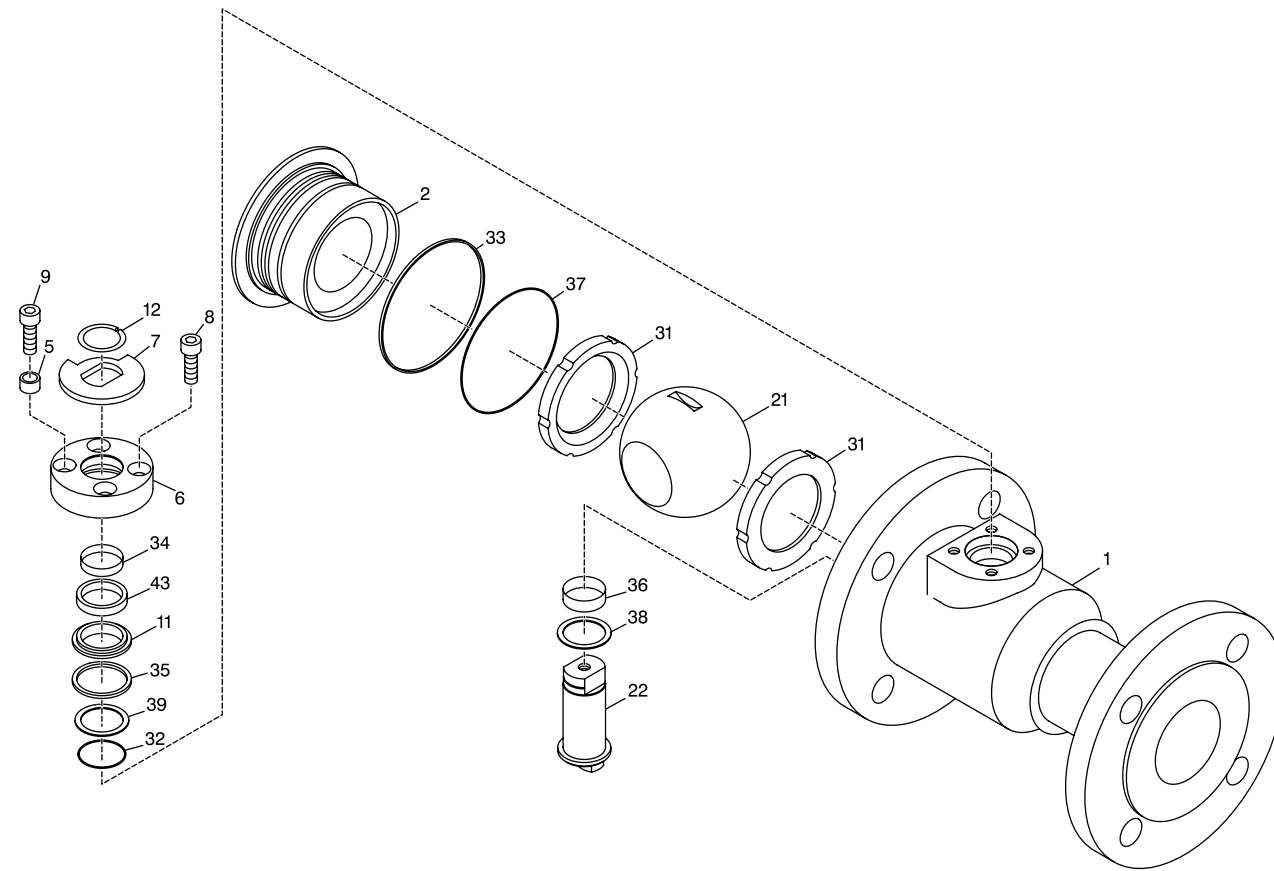


Danger!

For safety reasons, the position of the wrench must clearly reflect the OPEN position of the ball valve (Figure 0001-00-003).

Maintenance

Type EK/71



Danger!

Do not disassemble the valve under pressure. Before disassembly operate valve so that possible pressure behind the ball may escape.

Disassembly

- ▶ Stem (22) should be in CLOSED position.
- ▶ Remove snap ring (12) and stop disk (7).
- ▶ Detach screws (8, 9) with bush (5).
- ▶ Remove cover plate (6) with sealing ring (43), on DN 32-50 with bearing tape (34) and dowel pin, as well as thrust ring (11) with sealing ring (35). **
- ▶ Unscrew flange connection (2) with sealing ring (33) and O-ring (37) from body (1) using a special ARGUS tool (eccentric).
- ▶ Remove ball (21) and sealing rings (31).
- ▶ Press stem (22) downwards and take it out of the body together with bushing (36) and disks (38).
- ▶ The O-ring (32) and disk (39) are removed upwards.

Exchanging the Stem Sealing

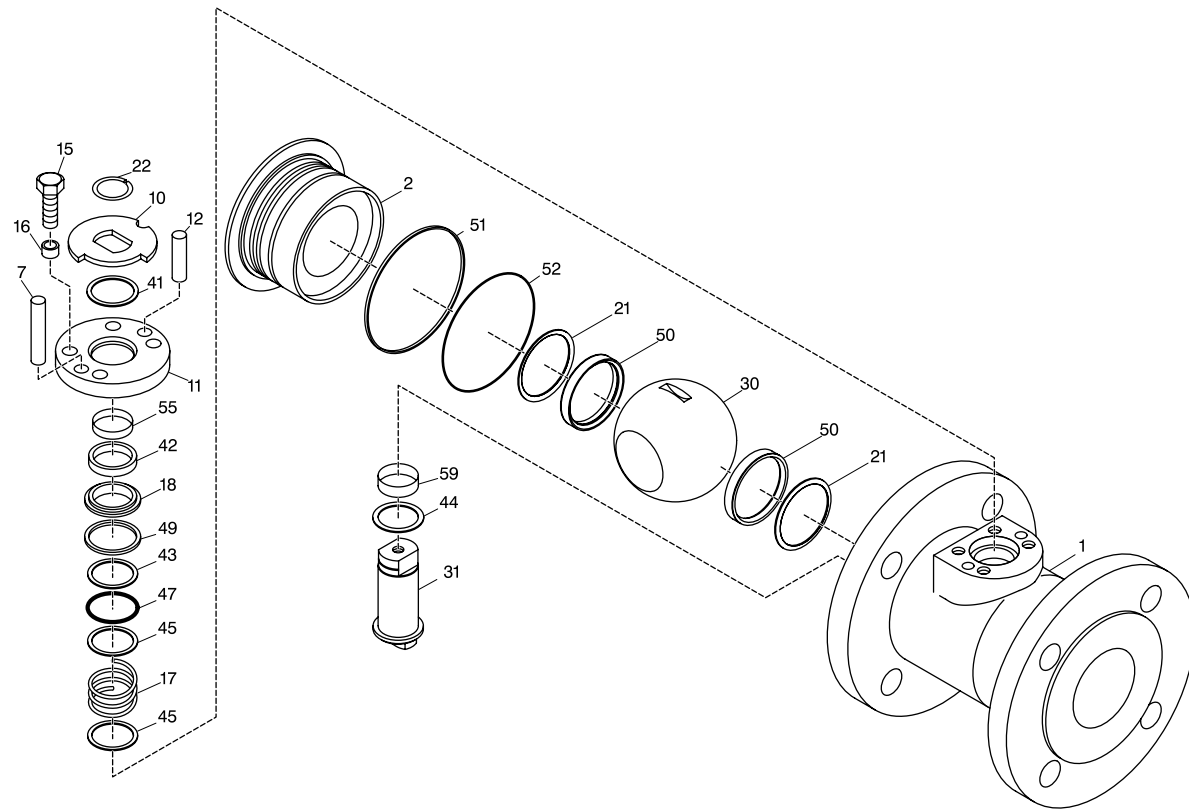
Proceed as per Disassembly until (**).

- ▶ Then exchange disk (39) and O-ring (32). When using a PTFE seal instead of O-ring (32), item (39) can be left out.

Depending on the requirements, a partial disassembly of the ball valve may be sufficient.

- ▶ To reassemble, proceed in reverse order.

Type FK/74



FK74-02-001



Danger!

Do not disassemble the valve under pressure. Before disassembly operate valve so that possible pressure behind the ball may escape.

Disassembly

- ▶ Stem (31) should be in CLOSED position.
- ▶ Remove thrust ring (22) and stop disk (10).
- ▶ Detach hexagon nut (15) with ring (16).
- ▶ Remove cover plate (11) with dowel pins (7, 12), bearing tape (55) and sealing ring (42) as well as thrust ring (18) with sealing ring (49). **
- ▶ Unscrew flange connection (2) with sealing ring (51) and O-ring (52) from body (1) using a special ARGUS tool (eccentric).
- ▶ Remove ball (30), spring washers (21) and annular piston (50).
- ▶ Press stem (31) downwards and take them out of body with thrust ring (44) and bushing (59).
- ▶ Remove ring (43), O-ring (47), compression spring (17) as well as rings (45) upwards.

Exchanging the Stem Sealing

Proceed as per Disassembly until (**).

- ▶ Remove ring (43), O-ring (47) and replace.

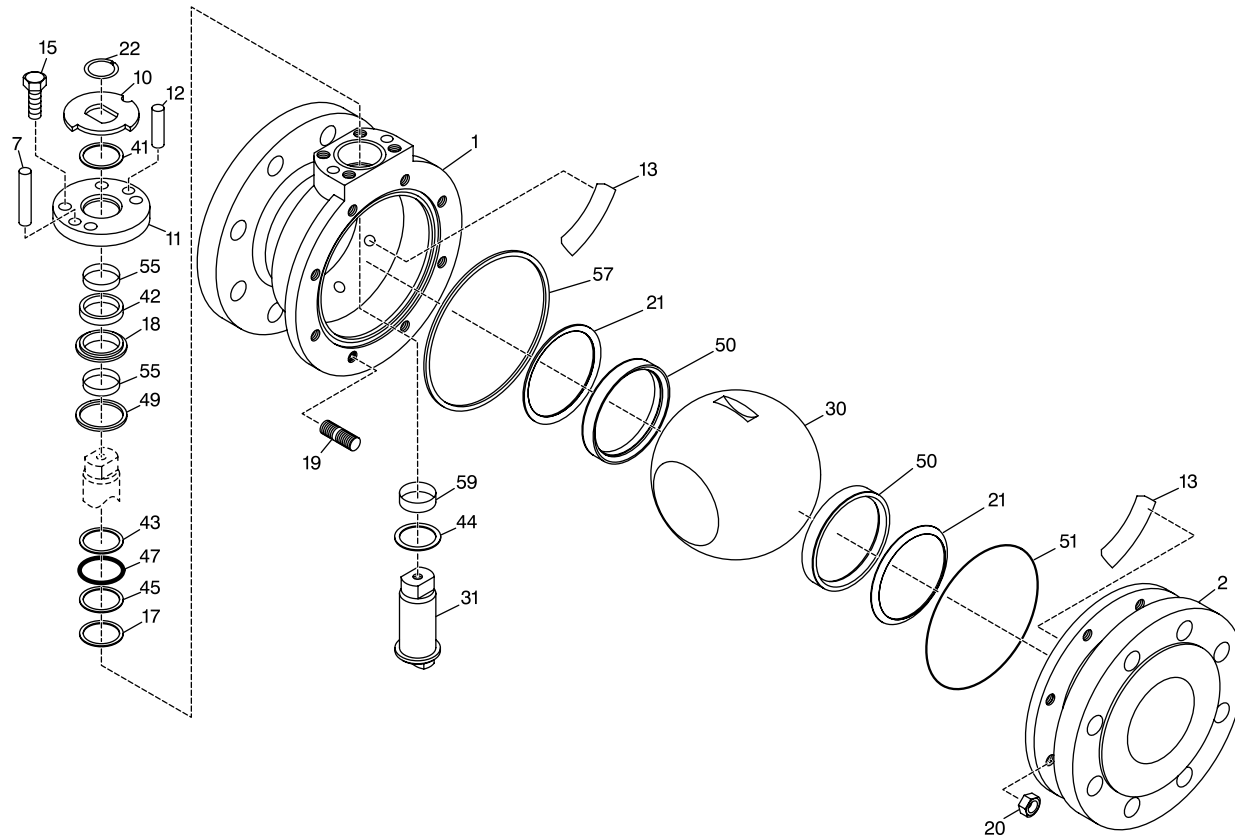
When using a PTFE seal instead of the O-ring (47), item (43) can be left out.

Items (45) and (17) will then be replaced by a ring.

Depending on the requirements, a partial disassembly of the ball valve may be sufficient.

- ▶ To reassemble, proceed in reverse order.

Type FK/75



FK75-02-001



Danger!

Do not disassemble the valve under pressure. Before disassembly operate valve so that possible pressure behind the ball may escape.

Disassembly

- ▶ Stem (31) should be in CLOSED position.
- ▶ Remove snap ring (22) and stop disk (10).
- ▶ Unscrew hexagon screws (15).
- ▶ Take off cover plate (11) with wiper ring (41), bearing tape (55), sealing ring (42), thrust ring (18), bearing tape (55), sealing ring (49) as well as dowel pins (7, 12). **
- ▶ Unscrew hexagon nuts (20) from body (2).
- ▶ Remove body (2), O-ring (51) and ring (57) from body (1).
- ▶ Remove ball (30), bearing seats (13), annular piston (50) and Belleville washers (21).
- ▶ Press stem (31) downwards and take them out of the body together with bushing (59) and thrust ring (44).
- ▶ Remove rings (43, 45), O-ring (47) and Belleville washer (17) upwards.

Exchanging the Stem Sealing

Proceed as per Disassembly until (**).

- ▶ Take thrust ring (43) and O-ring (47) off.
- ▶ Ring (45) and compression spring (17) can be left in body.

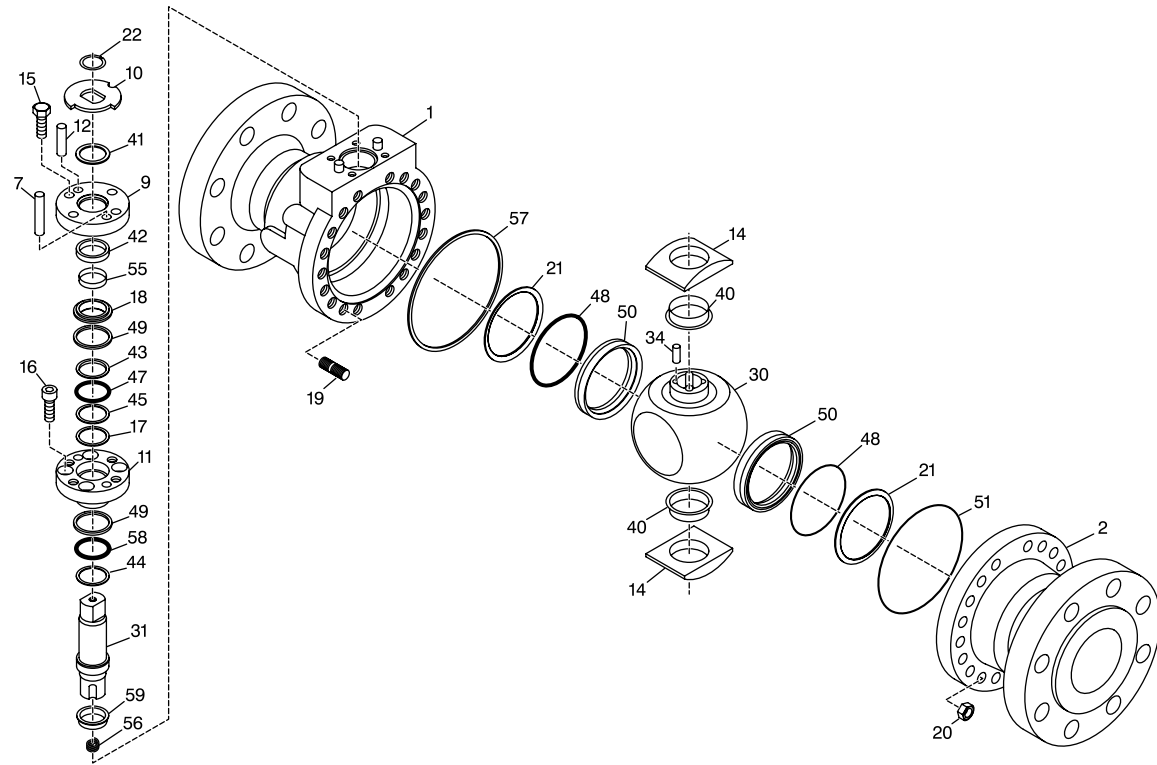
When using a PTFE seal instead of O-ring (47), item (43) can be left out.

Items (45) and (17) will then be replaced by a fill ring.

Depending on the requirements, a partial disassembly of the ball valve may be sufficient.

- ▶ To reassemble, proceed in reverse order.

Type FK/76



FK76-02-001



Danger!

Do not disassemble the valve under pressure. Before disassembly operate valve so that possible pressure behind the ball may escape.

Disassembly

- ▶ Stem (31) should be in CLOSED position.
- ▶ Remove snap ring (22) and stop disk (10).
- ▶ Unscrew hexagon screws (15). Take off plate (9) with wiper ring (41), thrust ring (18) with bearing tape (55) and sealing ring (49) as well as dowel pins (7, 12). **
- ▶ Unscrew cheese-head screws (16).
- ▶ Take off plate (11) with ring (43), O-ring (47), ring (45), Belleville spring washer (17), sealing ring (49), ring (44) and stem (31), flange sleeve (59) and compression spring (56).
- ▶ Unscrew hexagon nuts (20) from body (2).
- ▶ Remove body (2), O-ring (51) and sealing ring (57) from body (1).
- ▶ Remove ball (30) with 4 round keys (34), counter-bearing (14) with flange sleeve (40), annular piston (50) with optional O-ring (48) and Belleville spring washers (21).

Exchanging the Stem Sealing

Proceed as per Disassembly until (**).

- ▶ Take off ring (43), O-ring (47) and exchange.
- ▶ Ring (45) and compression spring (17) can be left in cover plate.

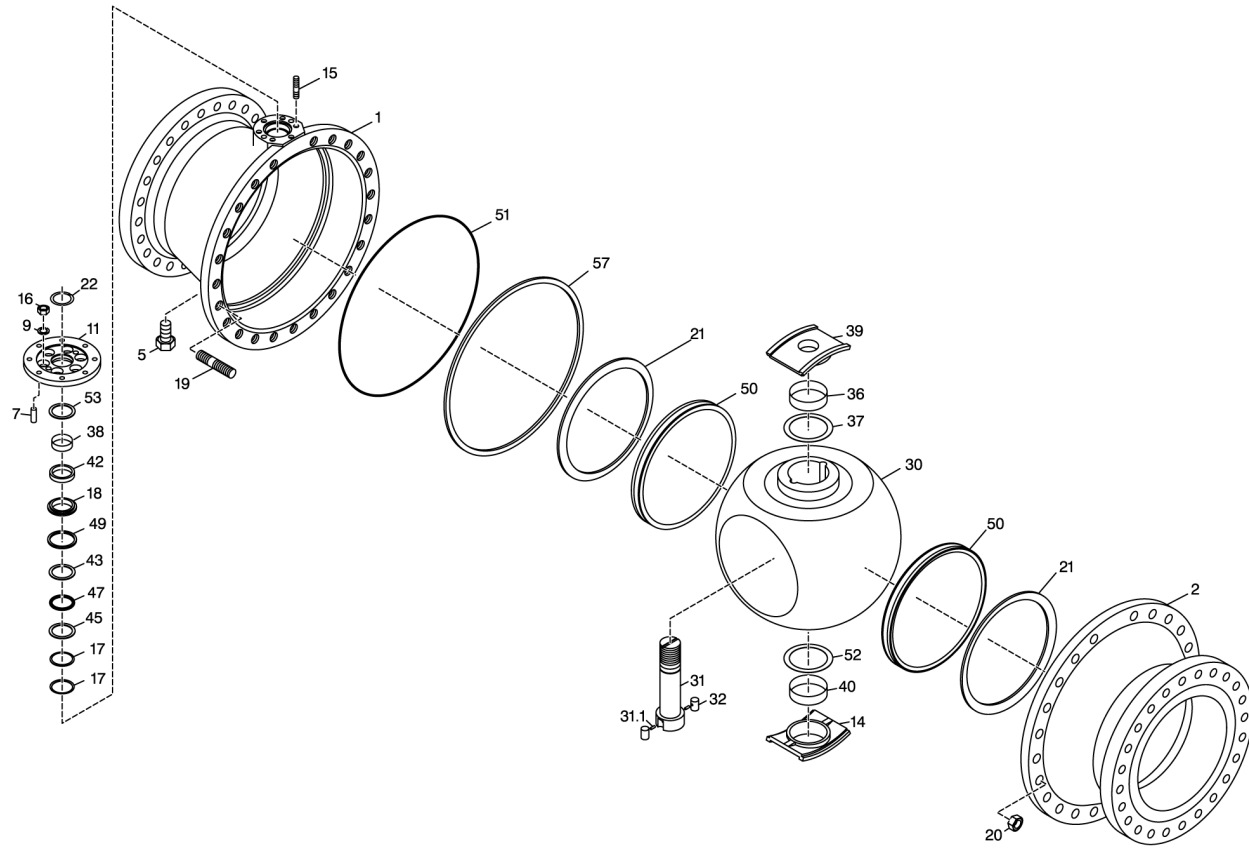
When using a PTFE seal instead of O-ring (47), item (43) can be left out.

Items (45) and (17) will then be replaced by a fill ring.

Depending on the requirements, a partial disassembly of the ball valve may be sufficient.

- ▶ To reassemble, proceed in reverse order.

Type FK/78



FK78-02-001



Danger!

Do not disassemble the valve under pressure. Before disassembly operate valve so that possible pressure behind the ball may escape.

Disassembly

- ▶ Stem (31) should be in CLOSED position (visible notch crosswise the direction of flow).
- ▶ Remove snap ring (22).
- ▶ Unscrew hexagon nuts (16) with lock washers (9).
- ▶ Take off plate (11) with wiper ring (53), bearing tape (38) and sealing ring (42), thrust ring (18) with sealing ring (49) as well as straight pin (7). **
- ▶ Press stem (31) with round keys (32) downwards and take out of the body.
- ▶ Unscrew hexagon nuts (20) from body (2).
- ▶ Remove body (2) O-ring (51) and sealing ring (57) from body (1).
- ▶ Remove ball (30), counter-bearings (14, 39) with wearing rings (37, 52) and bearing tapes (36, 40), annular piston (50), Belleville spring washers (21, 17), intermediate ring (45), O-ring (47) and bearing ring (43).

Exchanging the Stem Sealing

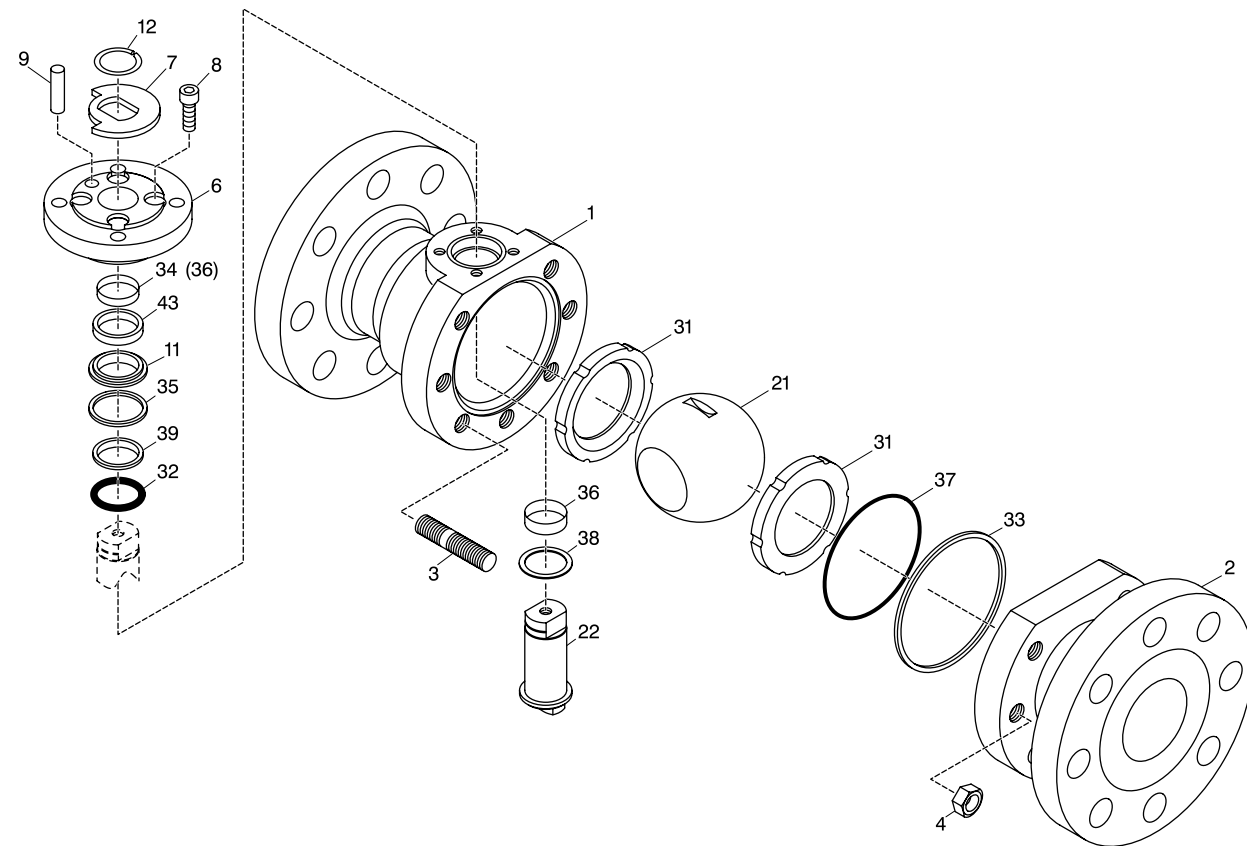
Proceed as per Disassembly until (**).

- ▶ Take off ring (43), O-ring (47) and exchange.
- ▶ Depending on the actual requirements, a partial disassembly of the ball valve might be sufficient.

Reassembly

- ▶ Insert Belleville spring washer (21) and annular piston (50) in body (1).
- ▶ Place ball (30) as well as lower counter-bearing (14) with bearing tape (40) and wearing ring (52) in body and turn to the OPEN position.
- ▶ After having assembled counter-bearing (39) with bearing tape (36) and wearing ring (37), insert stem (31) with round keys (32) in body from below.
- ▶ To continue reassembly, proceed in reverse order as described in disassembly.

Type FK/79



Danger!

Do not disassemble the valve under pressure. Before disassembly operate valve so that possible pressure behind the ball may escape.

Disassembly

- ▶ Stem (22) should be in CLOSED position.
- ▶ Remove snap ring (12) and stop ring (7). Unscrew cheese-head screws (8).
- ▶ Take off plate (6) with sealing ring (43) and bush (36) on DN 20 and 25 or bearing tape (34) and dowel pin on DN 32-50 as well as thrust ring (11) with sealing ring (35). **
- ▶ Unscrew hexagonal nuts (4) from body (2).
- ▶ Take off body (2), O-ring (37) and sealing ring (33) from body (1).
- ▶ Remove ball (21) and sealing rings (31).
- ▶ Press stem (22) downwards and take it out of the body together with bush (36) and washer (38).
- ▶ Removed O-ring (32) and washer (39) upwards.

Exchanging the Stem Sealing

Proceed as per Disassembly until (**).

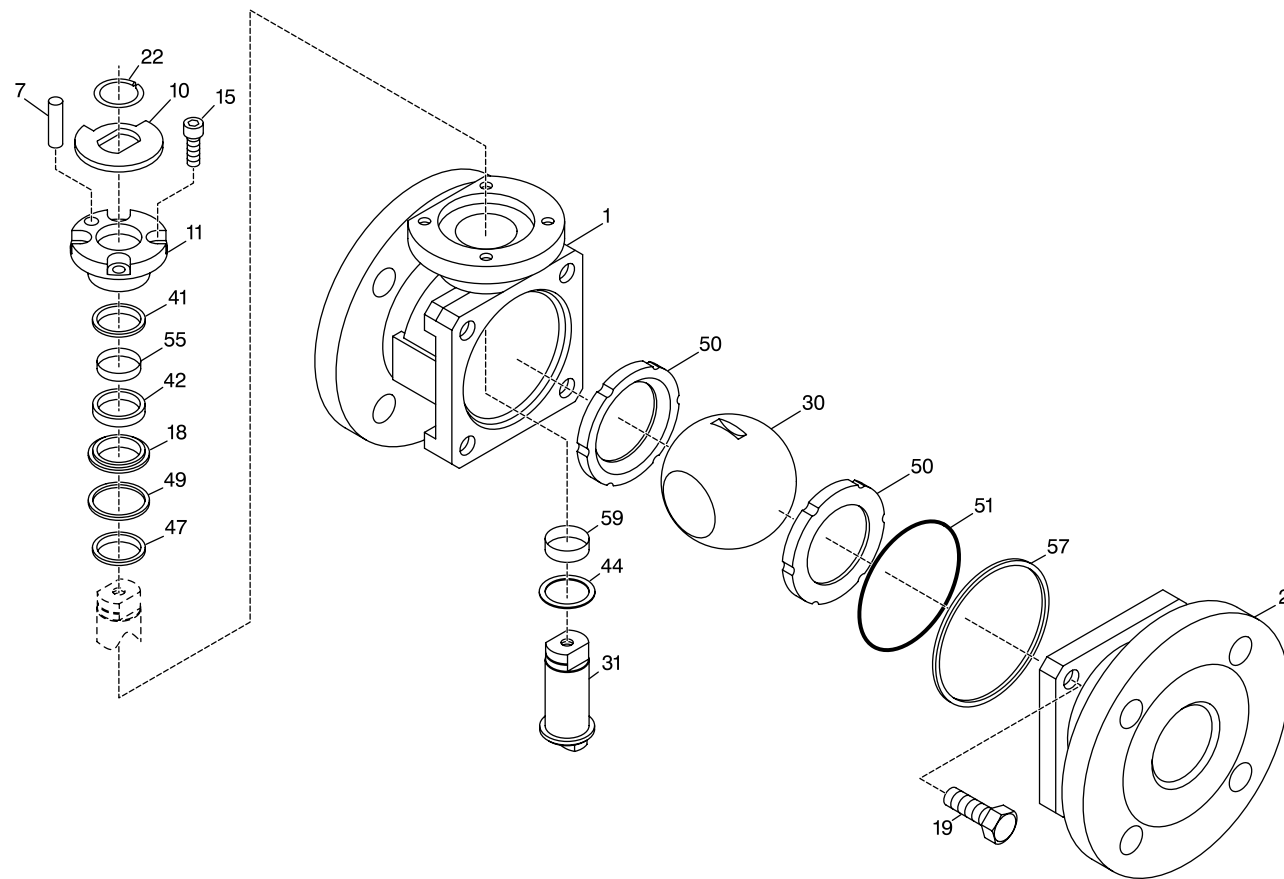
- ▶ Take off O-ring (32) and exchange bearing ring (39).

When using a PTFE seal instead of O-ring (32), item (39) can be left out.

Depending on the actual requirements, a partial disassembly of the ball valve might be sufficient.

- ▶ To reassemble, proceed in reverse order.

Type FK/79/F



Danger!

Do not disassemble the valve under pressure. Before disassembly operate valve so that possible pressure behind the ball may escape.

Disassembly

- ▶ Stem (31) should be in CLOSED position.
- ▶ Remove snap ring (22) and stop ring (10).
- ▶ Unscrew cheese-head screws (15).
- ▶ Take off plate (11) with dowel pin (7), sealing ring (42), bearing tape (55), on DN 80 and 100 with wiper ring (41) as well as thrust ring (18) with sealing ring (49). **
- ▶ Unscrew hexagon nuts (19).
- ▶ Take off body (2), O-ring (51) and sealing ring (57) from body (1), remove ball (30) and sealing rings (50).
- ▶ Press stem (31) downwards and take it out of the body together with bush (59) and washer (44).
- ▶ Remove the seal (47) upwards.

Exchanging the Stem Sealing

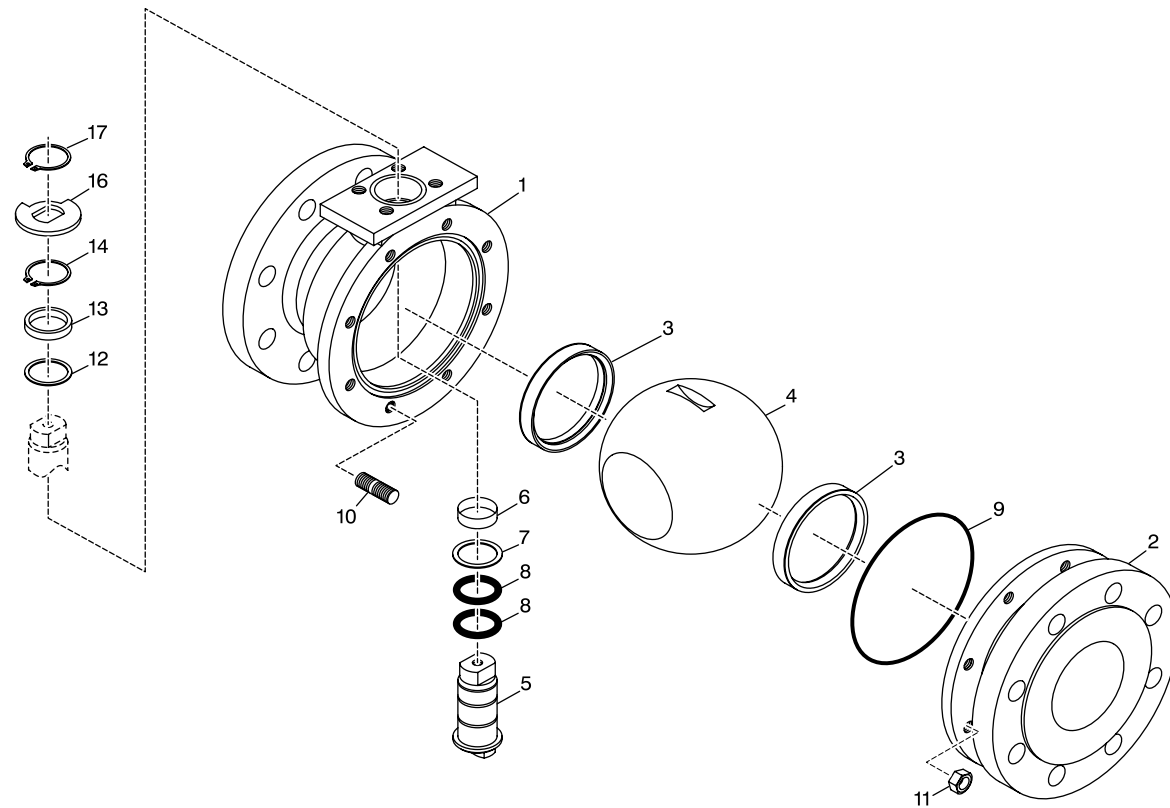
Proceed as per Disassembly until (**).

- ▶ Replace seal (47).

Depending on the requirements, a partial disassembly of the ball valve may be sufficient.

- ▶ To reassemble, proceed in reverse order.

Type FK/492



Danger!

Do not disassemble the valve under pressure. Before disassembly operate valve so that possible pressure behind the ball may escape.

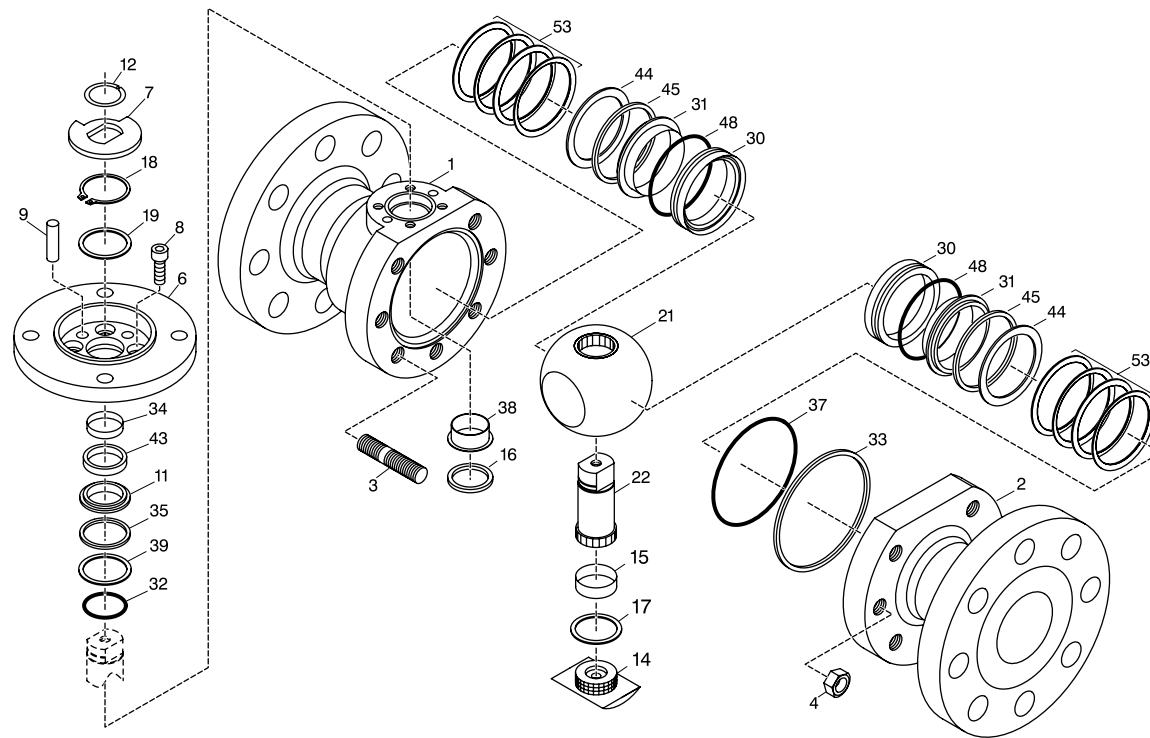
Disassembly

- ▶ Stem (5) should be in CLOSED position.
- ▶ Unscrew hexagonal nuts (11) from body (2).
- ▶ Take off body (2) and seal (9) from body (1), remove ball (4) and sealing rings (3).
- ▶ Take off snap ring (17), stop ring (16), snap ring (14), ring (13) and sliding disk (12).
- ▶ Then press stem (5) with both O-rings (8), bush (6) and wearing ring (7) downwards and take them out of body (1).

Depending on the requirements, a partial disassembly of the ball valve may be sufficient.

- ▶ To reassemble, proceed in reverse order.

Type HK/35



HK35-02-001



Danger!

Do not disassemble the valve under pressure. Before disassembly operate valve so that possible pressure behind the ball may escape.

Disassembly

- ▶ Stem (22) should be in CLOSED position.
- ▶ Remove snap ring (12), stop ring (7), snap ring (18) and washer (19).
- ▶ Unscrew cheese-head screws (8).
- ▶ Take off plate (6) with sealing ring (43), bearing tape (34) and dowel pin (9) as well as thrust ring (11) with sealing ring (35). **
- ▶ Press stem (22) downwards completely.
- ▶ Unscrew hexagonal nuts (4) from body (2).
- ▶ Take off body (2), O-ring (37) and sealing ring (33) from body (1).
- ▶ Take ball (21) with shaft (22), counter-bearing (14), wearing ring (17) and bearing tape (15) out of body.
- ▶ Take out ring (16), bush (38), O-ring (32) and washer (39).
- ▶ Remove Belleville spring washer (53), rings (44), sealing rings (45), bearing rings (31) and sealing rings (30) with O-rings (48) from body (1) and body (2).

Exchanging the Stem Sealing

Proceed as per Disassembly until (**).

- ▶ Exchange items (32) and (39).

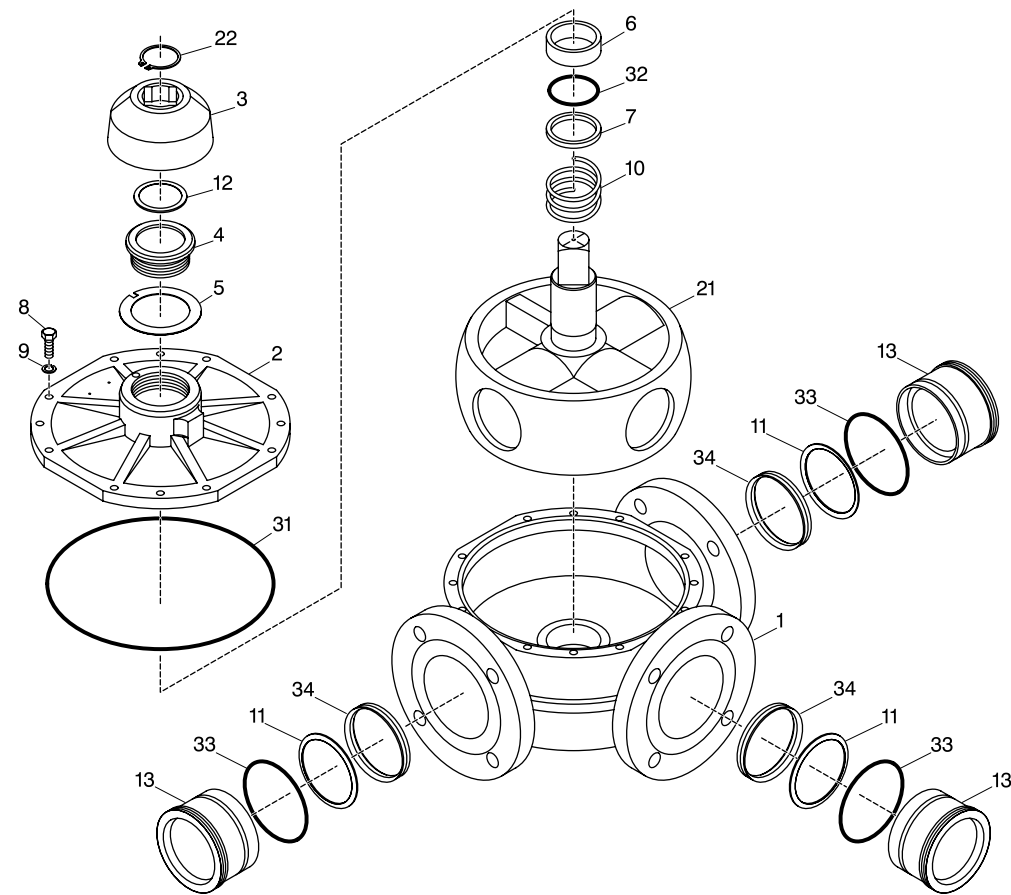
When using a PTFE seal instead of O-ring (32), item (39) can be left out.

Depending on the actual requirements, a partial disassembly of the ball valve might be sufficient.

Reassembly

- ▶ Place Belleville spring washers (53), rings (44), sealing rings (45), bearing rings (31) and sealing rings (30) with O-rings (48) in body (1) and body (2).
- ▶ Install bush (38).
- ▶ Insert stem (22) in ball (21) from below and then insert them with counter-bearing (14), bearing ring (15), wearing ring (17) and ring (16) in body (1).
- ▶ Place ball (21) in OPEN position and press it against the Belleville spring washers until stem (22) can be pulled upwards into the body.
- ▶ Pay attention to the marks on stem (22) and ball (21).
- ▶ To continue reassembly, proceed in reverse order as described in disassembly..

Type MW/22



MW22-02-001



Danger!

Do not disassemble the valve under pressure. Before disassembly operate valve so that possible pressure behind the ball may escape.

Disassembly

- ▶ Unscrew the connection pieces (13) with O-rings (33), annular pistons (34) and Belleville washers (11) from body (1).
- ▶ Remove snap ring (22) and stop cap (3).
- ▶ Bend the safety plate (5) open and unscrew the screwed socket (4) together with wiper ring (12).
- ▶ Remove the safety plate (5).
- ▶ Undo the hexagon screws (8) with spring washers (9) and lift off the lid (2) with O-ring (31).
- ▶ Remove compression spring (10), pressure disk (7), O-ring (32) and bushing (6).
- ▶ Take the plug shaft (21) out of body (1).

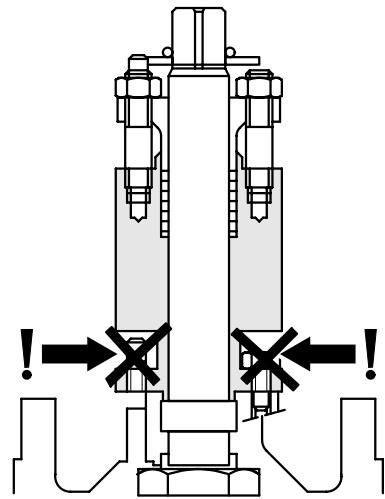
Depending on the actual requirements, a partial disassembly of the ball valve might be sufficient.

Reassembly

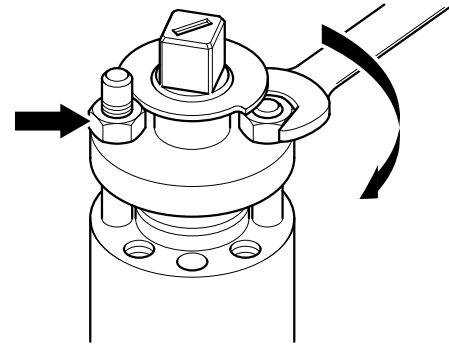
- ▶ To reassemble, proceed in reverse order.
- ▶ When reassembling the connection piece (13), be sure to turn it approximately 1/4 of a revolution back after retightening.

Accessories

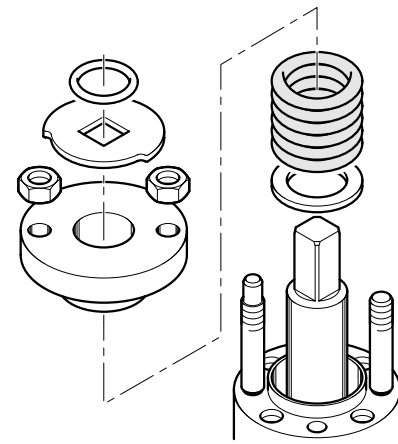
Stuffing Box Assembly



0104-03-001



0104-00-001



0104-00-002

For use at high temperatures, ball valves are fitted with an extension for the stem and a stuffing box assembly (see sectional drawing, 0104-03-001).

Re-tensioning the Seal

The stuffing box seal can be re-tensioned if necessary.

- ▶ For this purpose, turn the nuts on the head-less pins clockwise to retighten them (Figure 0104-00-001).



Caution!
Do not loosen the fixing nuts (Figure 0104-03-001).

Changing the Seals

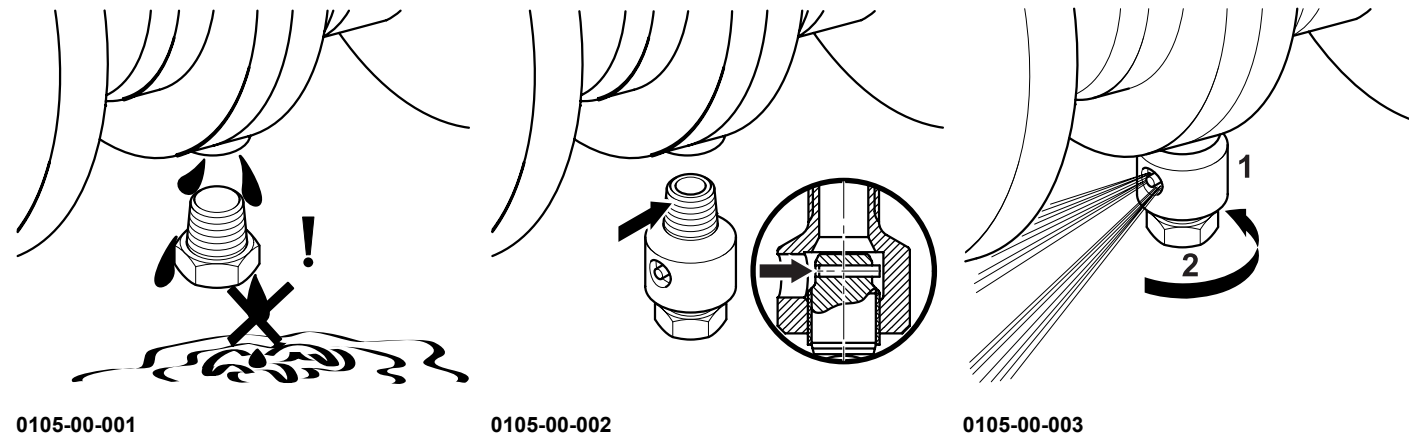


Danger!
The ball valve must be depressurized! To release pressure, turn ball.
Take care of any hazardous materials that might escape! Risk of explosion, fire and acid burn!

The seal is exhausted after being re-tensioned several times.

- ▶ Unscrew the nuts on the headless pins.
- ▶ Remove the stuffing box support.
- ▶ Lift the seals off carefully using a suitable tool
- ▶ Fit a new sealing assembly (Figure 0104-00-002).
- ▶ Replace the stuffing box support.
- ▶ Screw the nuts into position and tighten them uniformly.

Drain Plug



The drain plug is used to drain remaining media from the ball valve.

Danger!
De-pressurize the ball valve by turning the ball at 90° before removing drain and ventilation plug.

Danger!
Care must be taken when hazardous materials are involved!
Risk of explosion, fire and acid burn!

Place an appropriate vessel underneath the ball valve before opening the valve. The drain and ventilation plug can easily be loosened and removed. Damage can occur if it is not treated correctly (Figure 0105-00-001).

Drain and Ventilation Safety Plug

The safety plug is a special-purpose design to prevent the drain and ventilation plug from accidentally being lost. In addition, it allows the drain and ventilation plugs to be closed immediately if the ball valve is still accidentally pressurized (Figure 0105-00-002).

Installation

The complete safety plug is screwed into position using a chemical agent, such as Loctite.

Warning!
The plug may only be opened but not unscrewed by force (Figure 0105-00-003).

Warning!
Keep away from the outlet! Risk of injury!

Warning!
The medium is ejected sideways (Figure 0105-00-003)!

Supplementary Equipment

Valve Actuators (Adjusting Range 90°)

Valve actuators are used for ball valve automation. They are available in an electric or pneumatic/hydraulic version.

Position Control Systems

In automatic operation the drives of the ball valves are controlled by position control systems. Such position control systems are realized by process-controlled operations for in-stance.

Gearbox with Hand Wheel

Manually operated gears are used for large actuating torques. They are available in mechanical version.

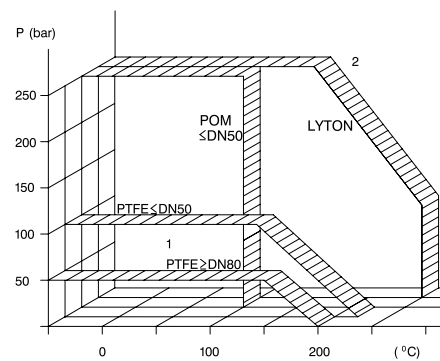
Position Limit Switch

Position limit switches are used to indicate the valve position in controlled areas.

Underfloor Fittings

Underfloor fittings are necessary for installing ball valves in the ground.

Metal Seals



0106-01-001

- 1 Seals with Soft Inserts
- 2 Metal Seals

Metal seals are used when the limits of use of seals with soft inserts are exceeded (see pressure-temperature diagram above), or for abrasive or aggressive substances. Please consult ARGUS in case of need.

Safety Devices

Safety devices are used to lock the ball valves to prevent unauthorized use.

Forced Shut-off Circuits

Forced shut-off circuits are used in processes and can be coded with keywords.

Safety Control Circuits

Safety control circuits, e.g. dead man's button, are used to cause the valve to automatically reach the safety position in processes.

Heating Jackets

Heating jackets are used to heat ball valves.

Secondary Sealing Systems

Secondary sealing systems are emergency sealings which restore the sealing effect of damaged seals by injecting a plastic sealing compound.



Argus

Ball valves

Flowserve Flow Control GmbH

Rudolf-Plank-Straße

D-76275 ETTLINGEN

Germany

Tel.: +49/72 43 103 -0

Fax: +49/72 43 103-222

E-Mail: argus@flowserve.com