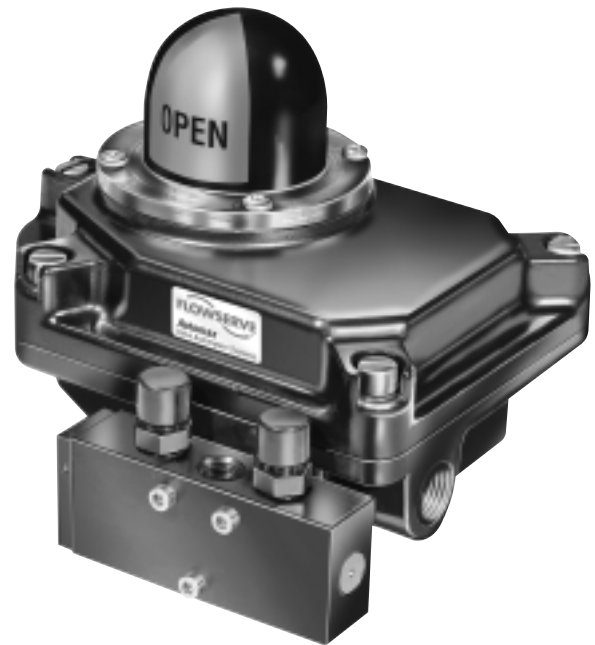


Aviator™ Integrated Valve Controller

Introduction:

The Aviator integrated valve controller combines an internal solenoid pilot, an external high capacity spool valve and a pair of valve indicating limit switches in one enclosure for maximum corrosion protection. It meets UL and cUL Nema 4, 4X, 7 and 9 waterproof and explosion proof standards. The integral switches and solenoid are pre-wired to a printed circuit board which provides screw terminal connectors for easy external wiring. The Aviator housing includes three 1/2" NPT conduit connections for field wiring flexibility. Housings have been designed for easy upgrade to fieldbus communication protocols: upgrading is achieved simply by changing circuit boards and shaft assemblies.

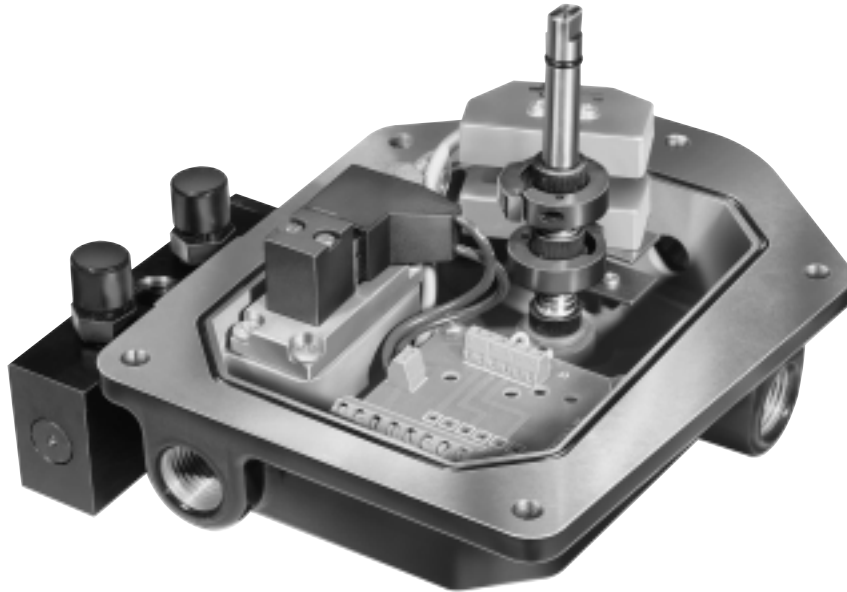


Applications:

The Aviator package is designed to meet corrosive, hazardous location valve controls and position signaling needs. Many switch options are available to meet a wide range of electrical specifications. Solenoid options include 3- and 4-way configurations, with standard 120 VAC, 220 VAC, 12 VDC, 24 VDC 2 Watt coils and other low-power coil options available. The Aviator is a globally certified (UL/CSA/ATEX) explosion-proof and flame-proof enclosure suitable for use throughout the world.

Durable construction and corrosion resistant materials and coatings provide protection against the toughest applications in all process industries including:

1. Chemical and Petrochemical
2. Power
3. Food and Beverage
4. Pharmaceutical
5. Municipal and Waste Water



Features:

1. **Internal Pilot Solenoid Coil** contains and protects the coil within the Aviator housing. This feature allows for secure operation in hazardous environments, eliminates expensive explosion proof conduit and fittings, simplifies wiring, and reduces the time and expense of installation. This feature also offers a high degree of solenoid coil protection in difficult “wash down” applications.
2. **Compact, High 1.8 Cv Spool Value.** The spool is internally vented to prevent the ingress of corrosive atmospheres. Available in anodized aluminum and 316 SST construction with optional momentary or locking manual overrides.
3. **Quick-Set Cams.** Tool free adjustment of switch trip point is accomplished simply by pushing or pulling the cam and rotating it to the new trip point position. Cams are spring-loaded and splined to maintain switch settings in any installed position. They are fully adjustable through 360° in 4° increments.
4. **Corrosion Resistant Materials.** All exposed parts are either stainless steel, anodized aluminum, or aluminum treated with Dichromate undercoat and polyester electrostatic powder top coat to enhance protection in corrosive environments. A food grade epoxy coating is also available.
5. **Captive Cover Screws** permit calibration without potential for losing screws.
6. **UltraDome™ Visual Position Indicator** provides adjustable, high-contrast, full angle viewing of valve position.
7. **Fieldbus Upgradable.** Fieldbus digital communications will become a common requirement in the near future. The Aviator housing has been designed to accommodate circuitry necessary to communicate with these systems and may be field-upgraded to expand the installed unit's capabilities.

Flowserve Corporation
Flow Control Division
www.flowserve.com

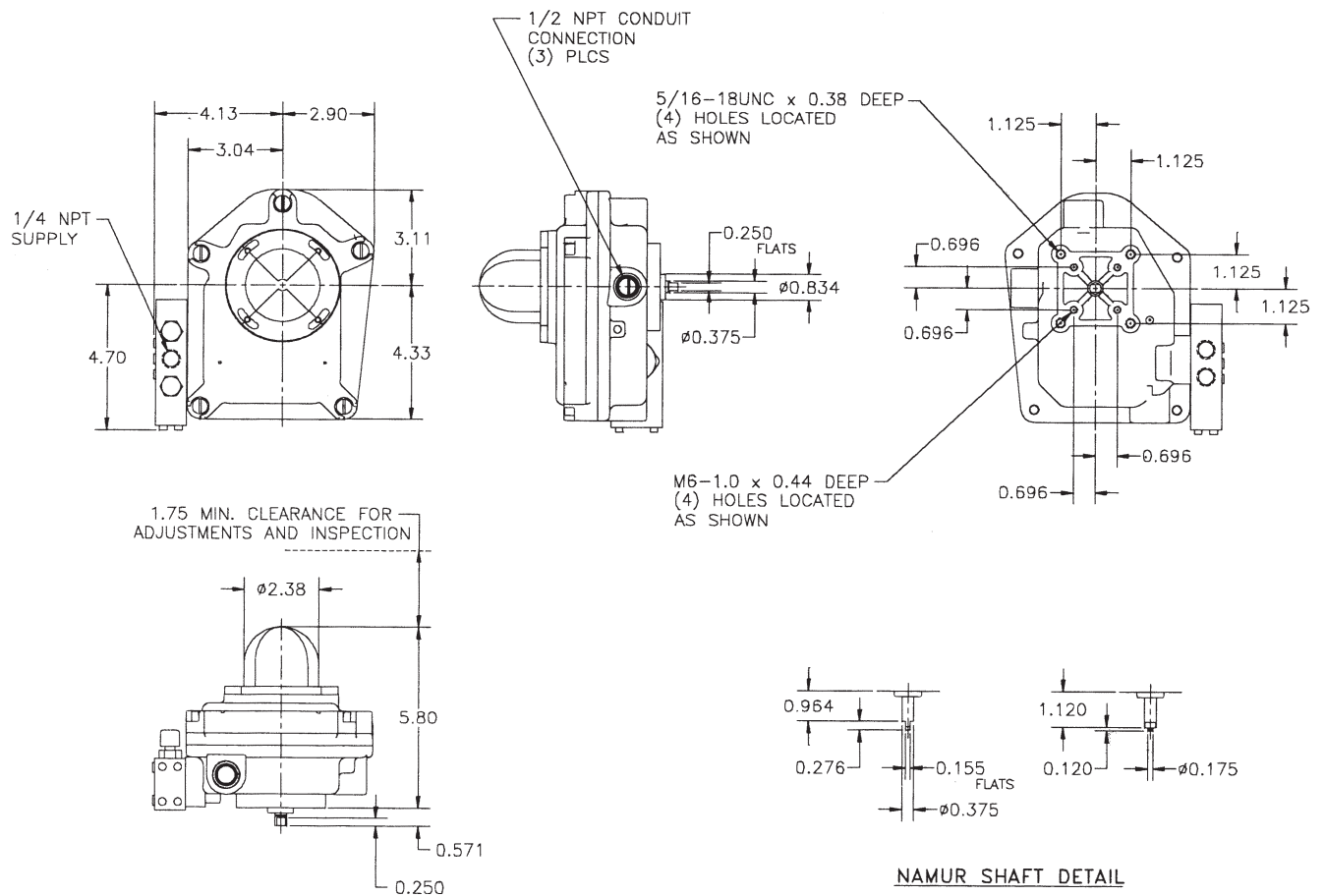
1350 N. Mountain Springs Parkway
Springville, Utah 84663-3004
Phone: 801 489 2233

1978 Foreman Dr.
Cookeville, TN 38501
Phone: 931 432 4021

Materials of Construction:

| Part | Materials |
|--------------------------|---|
| Housing/Cover | Aluminum with Dichromate and Powdercoat |
| Shaft | Stainless Steel |
| Cams/Splines | Nylon |
| UltraDome Dome and Rotor | Polycarbonate |
| Terminal Block | PCB Screw terminals |
| Internal Brackets | Stainless Steel or Plated Carbon Steel |
| All Internal Fasteners | Stainless Steel or Plated Carbon Steel |
| All External Fasteners | Stainless Steel |

Dimensions:





Flowserve Corporation
Flow Control Division
www.flowserve.com

1350 N. Mountain Springs Parkway
Springville, Utah 84663-3004
Phone: 801 489 2233

1978 Foreman Dr.
Cookeville, TN 38501
Phone: 931 432 4021

Principles of Operation:

The Aviator is designed for use with pneumatic rotary industrial valve actuators in hazardous locations. It provides actuator/valve control by receiving a direct solenoid voltage signal. It also provides remote indication of open and closed valve positions by completing separate electrical circuits. Local visual indication is accomplished with the UltraDome rotary indicator.

Enclosure Ratings:

NEMA 4, 4X, 7, and 9

Mechanical Switches

Types M1 & MG

Class 1, Groups C & D
Divisions 1 & 2
Class II Groups E, F, & G
Divisions 1 & 2
ATEX II 2 G EEx d IIB T4-T6

Proximity Switches

Types P1, P2, PP, PK, PL, PM, B4, BL,
BK, BM

Class 1, Groups C & D
Divisions 1 & 2
Class II, Groups E, F, & G
Divisions 1 & 2
Class 1, Groups A, B, C, & D
Division 2 only
ATEX II 2 G EEx d IIB T4-T6
ATEX II 3 G EEx n IIC T4-T6

Note: When using hermetically sealed proximity switches in Division 2 hazardous locations, a conduit seal is not required.

Temperature Range

Hazardous Locations: T6: -13 to 133 Deg. F (-25 to 56 Deg. C)
 T5: -13 to 160 Deg. F (-25 to 71 Deg. C)
 T4A: -13 to 176 Deg. F (-25 to 80 Deg. C)

Agency Listings

UL and cUL number E122717.
DEMKO 02 ATEX 130947
DEMKO 02 ATEX 0218321

Representative: