



***PMV***  
***Positioners with Advanced  
Digital Technology***



***Experience In Motion***

**PMV  
Advanced  
Digital  
Technology**



PMV positioners have, during the last 40 years, built a reputation for getting the job done. Now, a new level of operational awareness is available in plants, provided by an innovative and unique capability to monitor, analyze and communicate information to help plants being run more efficiently – regardless of where the device is installed.



**D3 with integrated wireless communication**



**D30 Single/Double Acting**

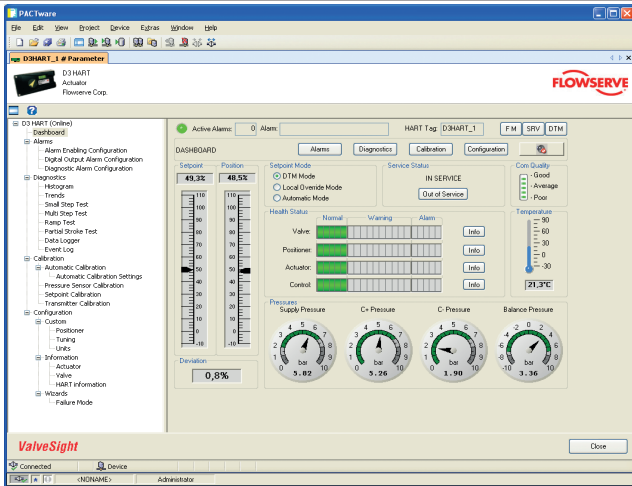
PMV positioners can handle all major wired communication standards; Hart, Profibus PA, Profibus DP, Foundation Fieldbus and 4-20 mA (In & Out). Even the most basic 4-20 mA units without conventional communication can be set up by a PC or Hart handheld using a unique PMV designed communication adapter.

The new wireless ISA100 communication for modulating and On / Off control plus monitoring of valves, simplifies commissioning and setting up configurations by providing a flexible system which can be upgraded or modified by a computer in the control room rather than through expensive re-wiring of the plant. PMV's wireless positioner uses safety features such as dual backbone routers to provide redundant radio paths and additionally incorporates safety features such as user configurable behavior at loss of signal or power from the plant. It reduces the cost of extensive and expensive wiring and cabinets, while eliminating issues due to damaged/ageing wires and corroding connectors throughout the plant. Additionally, it is ideal for controlling and monitoring remotely located valves and for plants spread out over large areas.

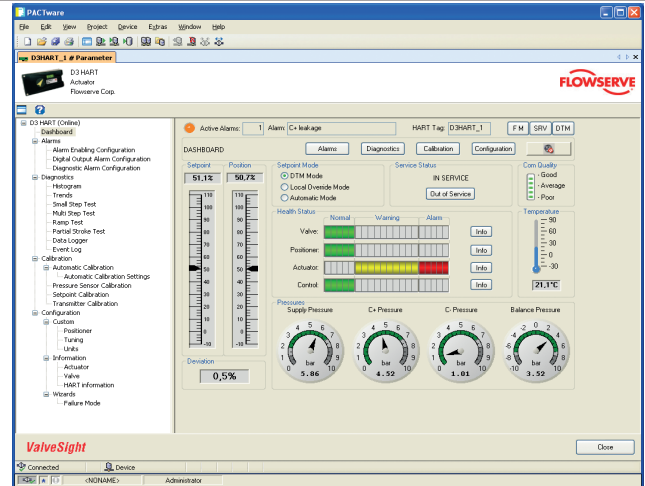
The ValveSight™ predictive diagnostics system provides a dashboard for two way communication between the valve and the operator. It taps into the valve and lets plant staff know not only detailed current status of the valve equipment but also provides indications on what is about to happen to help avoid unplanned stoppages of the plant.

**ValveSight provides:**

- On-line and off-line diagnostics of valve, actuator and positioner
- Alarms - explained in plain English
- Health bars to help enable predicting repairs and help plan maintenance to minimize costly process downtime
- Graphs presenting trends of key valve health parameters
- PST (partial stroke) – scheduled automatic tests or manual
- Alarm limits are easily customized



ValveSight™ displays green health bars indicating normal conditions of valve, actuator, positioner and process signals.



ValveSight™ has detected an issue, initially yellow bar starts to grow as it warns of an emerging problem thus providing early heads up that maintenance is recommended to avoid unplanned stoppage, then when alarm limit is reached an alarm is generated – red bar in picture indicates ValveSight has sent an alarm to the control system of the plant.

PMV positioners can be ordered with a range of Single or Double acting air relays to cover controlling the smallest high precision applications up to providing 620 NLPM @ 6 bar / 22 SCFM @ 87 psi to handle large valves – the PMV device gets the job done regardless of valve size. To reduce electricity costs for compressed air, zero bleed functionality is available. This also enables meeting strict EPA standards regarding low emissions of NG powered valves, furthermore it provides for selectable Stay-in-place or Go-to-close or Go-to-open of valve at loss of power supply. Select between sturdy aluminum or stainless steel housings. Eexd, IS and NI are available.

The PMV D-series platform shares the same core software and electronics across the range but its modular concept allows for versions such as the D3, D20 and D30 to provide vastly different functionality. This means the D-series covers a wide range of specialist / niche applications.

Functionality	D20	D30	D3
Valve action	Air relay	Single Acting Poppet valve	Single/Double Acting Spool valve
Air delivery	120 NLPM @ 6 bar / 4.2 SCFM @ 87 psi	620 NLPM @ 6 bar / 22 SCFM @ 87 psi	400 NLPM @ 6 bar / 13.8 SCFM @ 87 psi
Air consumption	2 NLPM @ 6 bar / 0.071 SCFM @ 87 psi	8 NLPM @ 6 bar / 0.28 SCFM @ 87 psi	<0.3 NLPM @ 6 bar / 0.01 SCFM @ 87 psi (Zero bleed)
User interface	LED indicators, single button operation	Graphics LCD plus LEDs, multi buttons	Graphics LCD, multi buttons
Hart, Profibus PA, Fieldbus communication	Yes	Yes	Yes
Wireless ISA100, Profibus DP communication	No	No	Yes
Explosion proof, Intrinsically safe, Non Incendive certificates	Eexd, IS, NI	No	Eexd, IS
SIL 2	No	No	Yes
Advanced diagnostics, ValveSight, DTM, Integrated pressure sensors	Yes	Yes	Yes
Continuous position feedback, integrated limit switches	Yes	Yes	Yes
Mounting kits to cover all major valves incl for direct-mounting	Yes	Yes	Yes

The PMV positioner is designed not only to fit standard valves but also to allow for instant tailor-made solutions to satisfy an infinite variety of special applications. With PMV positioners and switch boxes you can expect class leading on-time delivery, excellent customer service and access to trained engineers when technical support is required.



FCD PMENBR0021-00-A4 07/15.

***To find your local Flowserve representative,  
visit [www.flowserve.com](http://www.flowserve.com)***

Flowserve Corporation has established industry leadership in the design and manufacture of its products. When properly selected, this Flowserve product is designed to perform its intended function safely during its useful life. However, the purchaser or user of Flowserve products should be aware that Flowserve products might be used in numerous applications under a wide variety of industrial service conditions. Although Flowserve can (and often does) provide general guidelines, it cannot provide specific data and warnings for all possible applications. The purchaser/user must therefore assume the ultimate responsibility for the proper sizing and selection, installation, operation, and maintenance of Flowserve products. The purchaser/user should read and understand the Installation Operating and Maintenance (IOM) instructions included with the product, and train its employees and contractors in the safe use of Flowserve products in connection with the specific application.

While the information and specifications contained in this literature are believed to be accurate, they are supplied for informative purposes only and should not be considered certified or as a guarantee of satisfactory results by reliance thereon. Nothing contained herein is to be construed as a warranty or guarantee, express or implied, regarding any matter with respect to this product. Because Flowserve is continually improving and upgrading its product design, the specifications, dimensions and information contained herein are subject to change without notice. Should any question arise concerning these provisions, the purchaser/user should contact Flowserve Corporation at any one of its worldwide operations or offices.

©2015 Flowserve Corporation, Irving, Texas, USA. Flowserve and PMV are registered trademarks of Flowserve Corporation.

**Palmstierna International AB**  
Korta Gatan 9  
SE-171 54 Solna  
SWEDEN  
Tel: +46 (0) 8 555 106 00  
Fax: +46 (0) 8 555 106 01  
E-mail: [infopmv@flowserve.com](mailto:infopmv@flowserve.com)

**Germany**

Flowserve Flow Control GmbH  
Rudolf-Plank Strasse 2  
D-76275 Ettlingen  
GERMANY  
Tel: +49 (0) 7243 103 0  
Fax: +49 (0) 7243 103 222  
E-mail: [argus@flowserve.com](mailto:argus@flowserve.com)

**UK**

Flowserve Flow Control UK  
44 Victoria Way, Burgess Hill  
West Sussex, RH15 9NF  
UNITED KINGDOM  
Tel: +44 (0) 1444 884846  
E-mail: [pmvuksales@flowserve.com](mailto:pmvuksales@flowserve.com)

**Italy**

Flowserve Spa  
Via Prealpi, 30  
20032 Cormano (Milano)  
ITALY  
Tel: +39 (0) 2 663 251  
Fax: +39 (0) 2 615 18 63  
E-mail: [infoitaly@flowserve.com](mailto:infoitaly@flowserve.com)

**USA, Mexico**

PMV-USA  
14219 Westfair West Drive  
Houston, TX 77041, USA  
Tel: +1 281 671 9209  
Fax: +1 281 671 9268  
E-mail: [salespmv@flowserve.com](mailto:salespmv@flowserve.com)

**Asia Pacific Headquarters**

Flowserve Pte Ltd.  
No. 12 Tuas Avenue 20  
REPUBLIC OF SINGAPORE 638824  
Tel: +65 (0) 687 98900  
Fax: +65 (0) 686 24940  
E-mail: [fcdasiaprocess@flowserve.com](mailto:fcdasiaprocess@flowserve.com)

**South Africa**

Flowserve  
Unit 1, 12 Director Road  
Spartan Ext. 2  
1613 Kempton Park, Gauteng  
SOUTH AFRICA  
Tel: +27 (0) 11 397 3150  
Fax: +27 (0) 11 397 5300  
E-mail: [mijfferrey@flowserve.com](mailto:mijfferrey@flowserve.com)

**The Netherlands**

Flowserve Flow Control Benelux  
Rechtzaad 17  
4703 RC Roosendaal  
THE NETHERLANDS  
Tel: +31 (0) 30 6771946  
Fax: +27 (0) 30 6772471  
E-mail: [fbinfo@flowserve.com](mailto:fbinfo@flowserve.com)

**China**

Flowserve  
Hanwei Building  
No. 7 Guanghua Road  
Chao Yang District  
100004 Beijing  
CHINA  
Tel: +86 (10) 6561 1900  
Fax: +86 (10) 6561 1899  
E-mail: [mjiang@flowserve.com](mailto:mjiang@flowserve.com)