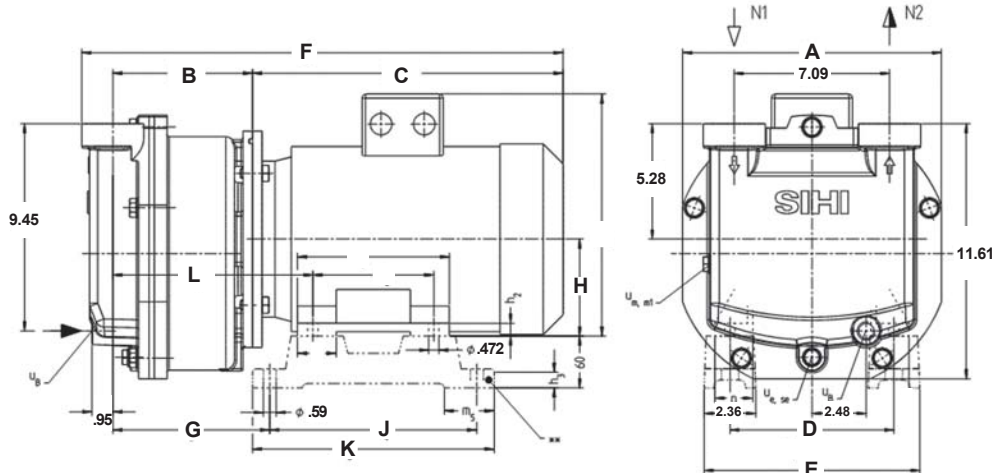


Dimensions (inches)

PUMP MODEL	A	B	C	D	E	F	G	H	J	K	L
LEM 130	11.82	5.71	12.60	7.48	9.84	19.72	6.50	4.41	9.45	11.20	8.47
LEM 155	11.82	6.38	16.77	8.50	10.87	24.51	8.74	5.20	10.94	12.60	10.71

For connection sizes/ratings and motor sizes refer to engineering data table on reverse.



Capacity Table

Pump Model - LEME 130.OZ.AAE.0.CW														
Speed (RPM)	6" Hg. V. 608 Torr		12" Hg. V. 455 Torr		18" Hg. V. 303 Torr		22" Hg. V. 201 Torr		24" Hg. V. 150 Torr		25" Hg. V. 125 Torr		27" Hg. V. 75 Torr	
	cfm	HP	cfm	HP	cfm	HP	cfm	HP	cfm	HP	cfm	HP	cfm	HP
1750	71	4.8	71	5.2	71	5.6	68	5.8	62	5.9	58	6.0	41	6.2
1450	59	3.1	59	3.5	59	3.7	55	3.95	50	4.0	44	4.01	25	4.02
Pump Model - LEME 155.OZ.AAE.0.CW														
1750	92	6.1	94	6.9	94	7.2	89	7.2	82	7.2	76	7.3	53	7.4
1450	77	4.2	79	4.8	80	5.0	74	5.1	65	5.1	57	5.1	32	5.2

This data represents average values for pumps in standard materials. Capacity in cubic feet per minute at 68°F (20°C) using 60°F (15°C) water as a service liquid. Vacuum in inches Hg. Barometric pressure at sea level 29.92" Hg. abs. (760 Torr). All performance data is dry air with normal (no excess) water flow.

All performance data per HEI standards; subject to SIHI standard tolerances.

ENGINEERING DATA

PUMP MODEL	130	155
Gas Conn. Size - N1 , N2	G 1½"	G 1½"
Ser. Liq. Line Qty/Size - U _B	G ½"	G ½"
1) Drain (U _e) & (U _{se})	G3/8"	G3/8"
Pump & Motor Wt. (lb.)	155	200
Separator Size-Recirc (G)	10	10
Norm Max. Gas Temp. (°F)	200	200
Norm Max. Liq. Temp. (°F)	160	160
Sound Level @24" Hg. (dBA)	65	65
Casing Max. WP/Hydro	30/45	30/45
Motor Data		
Motor Speed @ 60 HZ.	1750	1750
Motor Speed @ 50 HZ.	1450	1450
Std. HP/Frame @ 60 HZ.	8	10.7
Std. HP/Frame @ 50 HZ.	4	5.5
Std. Motor Enclosure	TEFC (IP55)	TEFC (IP55)
Motor Code Approvals	CE, ATEX	CE, ATEX
Std. Service Factor	1.0	1.0
Stock Voltages	440-480	440-480
2) ø Drain Con. & Gauge Con.	G3/8"	G3/8"

Note: All connections labeled G x" are European straight thread.

- 1) U_e & U_{se} are the same connection with multiple uses.
- 2) U_m & U_{m1} are the same connection with multiple uses.

SERVICE LIQUID RATES - No Excess Flow

PUMP MODEL - LEME 130									
Pump Speed	27" Hg. V. 75 Torr			24" Hg. V. 150 Torr			18" Hg. V. 300 Torr		
	A	B	C	A	B	C	A	B	C
1750	4.2	1.1	0.7	4.0	1.2	0.8	3.3	1.5	1.0
1450		0.8	1.4		0.8	1.4		0.8	1.3
PUMP MODEL - LEME 155									
1750	4.2	1.3	1.9	4.0	1.3	2.0	3.3	1.3	1.8
1450		1.0	1.6		1.0	1.6		1.0	1.5

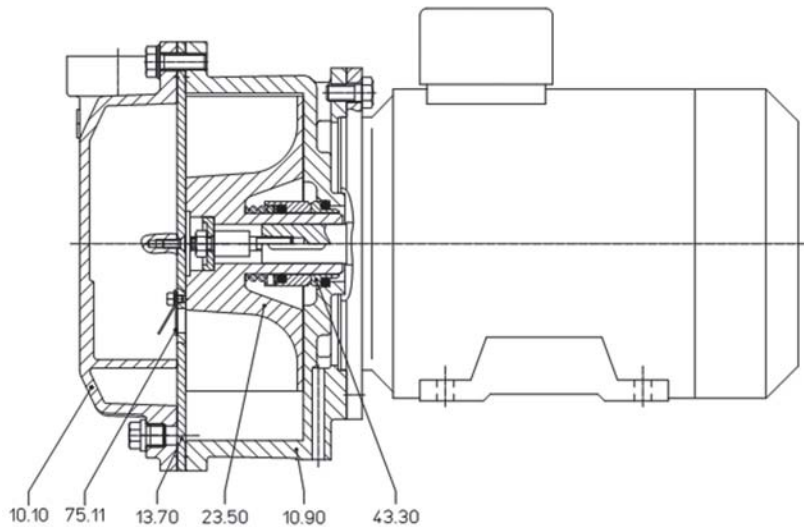
Column 'A' is the flow in USGPM required - once through.

Column 'B' is the make-up flow required when make-up water is 5°C (9°F) cooler than service water.

Column 'C' is the make-up flow when make-up water is 10°C (18°F) cooler than service water.

Note: The service liquid supply pressure may vary with pump speed and vacuum level. Please consult factory engineering department for additional information.

SECTIONAL



MATERIALS

ITEM	OA
10.10 Cover	Cast Iron (ASTM A48 CL 30)
10.90 Center Body	Cast Iron (ASTM A48 CL 30)
13.70 Intermediate	Stainless Steel
23.50 Impeller	Red Brass
43.30 Mechanical Seal	Carbon Steel / Carbon / Buna Elastomers
75.11 Valve Assembly	Stainless Steel / Teflon