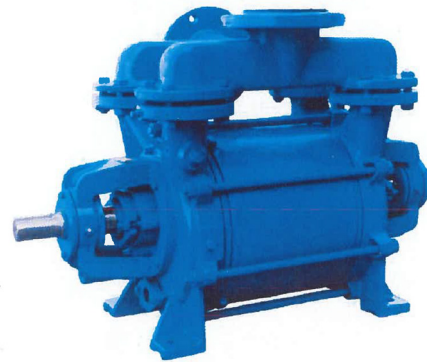
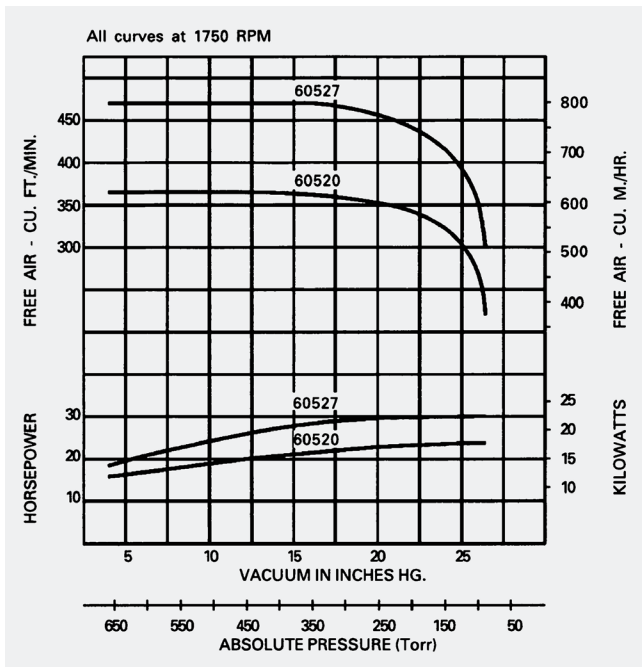


SIHI® LPH Series Liquid Ring Vacuum Pump

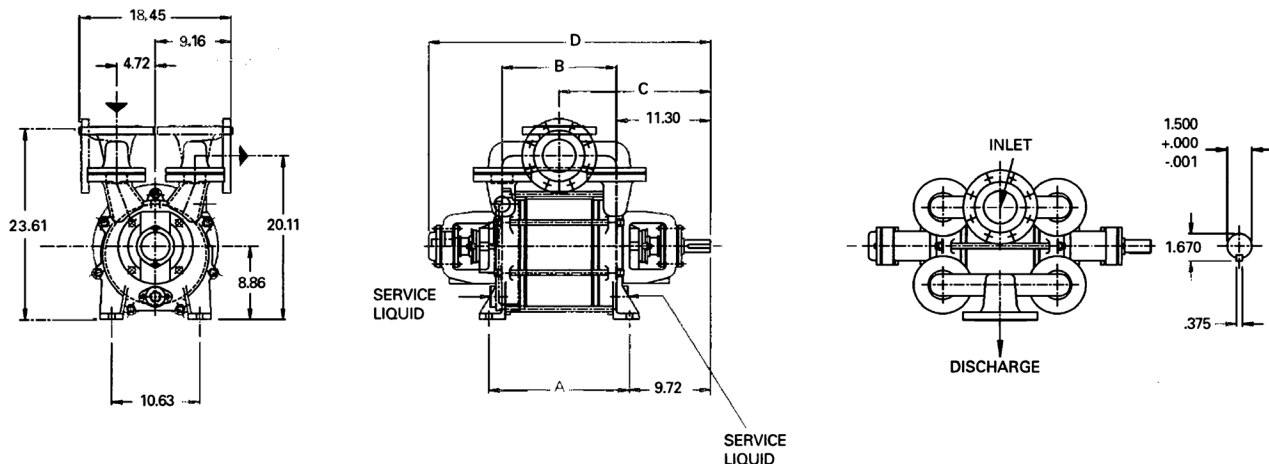
LPH 60000



Dimensions (inches)

Pump Model	A	B	C	D
60520	16.94	13.78	18.19	33.96
60527	19.54	16.38	19.49	36.56

For connection sizes/ratings and motor sizes, refer to engineering data table on reverse.



*Side discharge available on 0B pumps only.

For baseplate mounting, obtain factory certified dimensions.

Capacity Table

Pump Model – LPH 60520																
Speed (RPM)	4 in. Hg V. 658 Torr		8 in. Hg V. 557 Torr		12 in. Hg V. 455 Torr		16 in. Hg V. 354 Torr		20 in. Hg V. 252 Torr		24 in. Hg V. 150 Torr		26 in. Hg V. 100 Torr		26.4 in. Hg V. 89 Torr	
	ACFM	HP	ACFM	HP	ACFM	HP	ACFM	HP	ACFM	HP	ACFM	HP	ACFM	HP	ACFM	HP
1750	365	15.8	365	17.8	365	19.9	362	21.4	352	22.8	322	23.5	270	23.7	220	23.7
1150	225	6.5	232	8.4	235	9.8	233	11.2	218	12.2	175	12.9	120	12.9	-	-
Pump Model – LPH 60527																
1750	470	18.4	470	22.4	470	25.8	470	28.3	456	29.6	415	29.9	350	30.0	300	30.0
1150	283	9.5	290	11.5	295	13.4	295	15.0	290	16.3	255	17.0	150	17.0	-	-

This data represents average values for pumps in standard materials. Capacity in actual cubic feet per minute (ACFM) at 68°F (20°C) using 60°F (15°C) water as a service liquid. Vacuum in inches Hg. Barometric pressure at sea level 29.92” Hg. abs. (760 Torr).

All performance data per HEI® standards.

All data is subject to change without notice.

Engineering Data

Pump Model	60520	60527
Gas Conn. Size/Rating (U)	4 in./150 RF	4 in./150 RF
Service Liq. Line Size/Rating (U _g)	1 in./NPT	1 in./NPT
Cont. Drain Size/Rating (U _{se})	½ in./NPT	½ in./NPT
Motor (@ 1750 RPM) HP	⁵ 25	30
Bare Pump Wt. (lb.)	420	490
4) Direct Dr. Basemount (lb.)	1046	1306
Min. V-Belt Sheave Dia.	7.9 in.	7.9 in.
Separator Model - XBA	4020	4027
Separator Size - Recirc. (Gal.)	30	30
1&2) Norm. Max. Gas Temp. (°F)	200	200
2) Max. Service Liq. Temp. (°F)	180	180
3) Sound Level (dBA)	79	79
Moment of Inertia Wr ² (lb. ft ²)	6.4	8.5
Casing Max. Work Pressure (psi)	30	30

- 1) Max. gas temperature with saturated gases.
- 2) Higher temperatures possible on request.
- 3) At 3 ft., 1750 RPM with motor (not certified).
- 4) Basemount includes pump, motor, base, coupling and guard.
- 5) Operation above 18” Hg motor should have 1.15 SF.

Service Liquid Rates

Pump Model – LPH 60520															
Pump Speed	8 in. Hg V. 557 Torr			12 in. Hg V. 455 Torr			16 in. Hg V. 354 Torr			20 in. Hg V. 252 Torr			26 in. Hg V. 100 Torr		
	A	B	C	A	B	C	A	B	C	A	B	C	A	B	C
1750	4.8	3.1	2.3	5.9	3.8	2.8	6.5	4.0	2.9	8.0	4.7	3.4	10	5.5	3.8
1150		2.3	1.5		2.7	1.8		3.0	2.0		3.5	2.2		4.0	2.5
Pump Model – LPH 60527															
1750	5.2	3.6	2.7	6.0	4.1	3.1	7.5	4.9	3.7	8.6	5.5	4.0	11	6.4	4.5
1150		2.7	1.9		3.2	2.2		3.8	2.5		4.2	2.8		4.8	3.1

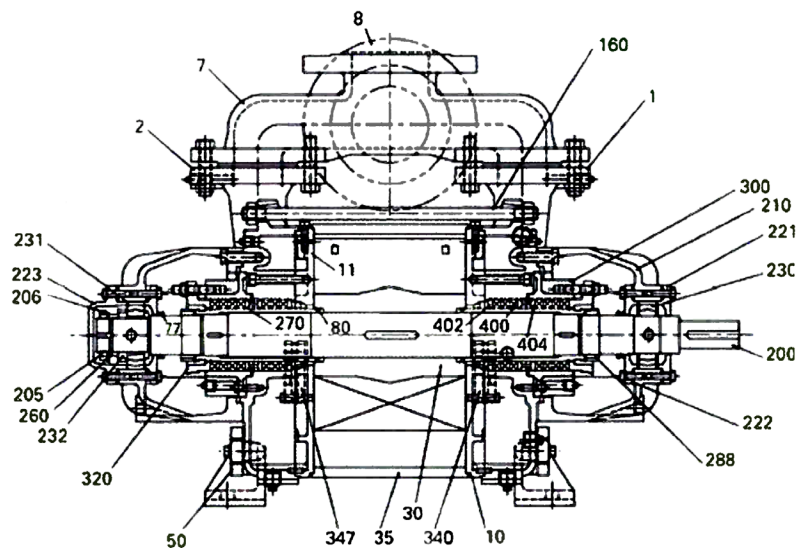
Column 'A' is the flow in USGPM required - once through.

Column 'B' is the mark-up flow required when mark-up water is 5°C (9°F) cooler than service water.

Column 'C' is the mark-up flow when mark-up water is 10°C (18°F) cooler than service water.

Note: The service liquid supply pressure may vary with pump speed and vacuum level. Consult factory engineering department for additional information.

Sectional



Standard rotation "AB" (clockwise) viewed from driven end. 'AL' (counter clockwise upon request).

Parts List

1. Suction Cover	160. Tie Bolt Assembly	260. Spacer
2. Discharge Cover	200. Shaft	270. Shaft Sleeve
7. Suction Manifold*	223. Bearing Nut	288. Shaft Nut
8. Discharge Manifold*	206. Lockwasher	300. Packaging Flange
10. Intermediate	210. Bearing Housing	320. Gland
11. Intermediate	221. Bearing Cover	340. Orifice Plate Assy
30. Impeller	222. Bearing Cover	347. Orifice Plate Assy
35. Centerbody	223. Bearing retainer	400. Packing ring
50. Counter Flange	230. Bearing	402. Neck Ring
77. Splash Ring	231. Bearing	404. Lantern Ring
80. O-ring	232. Bearing Sleeve	

*Both manifold vertical up in pumps with 4B materials.

Materials

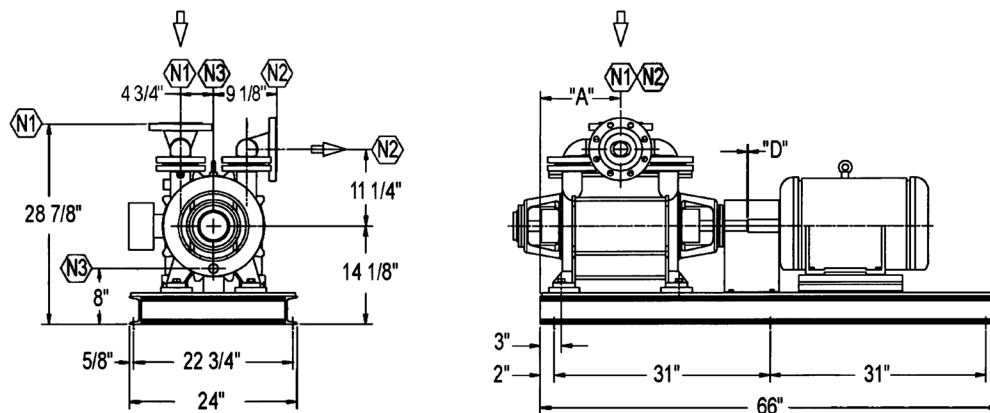
Item	OB	4B
Casing - Wetted	Cast Iron	316 SS
Intermediates	Cast Iron	316 SS
Impeller (s)	Ductile Iron	316 SS
Shaft ⁶	420 SS QT	420 SS QT
Shaft Sleeves	420 SS	316 SS
Shaft Sealing	AAB	AAB
Casing - Non Wetted	Cast Iron	Cast Iron

AAB = single O-ring pusher seal with viton O-rings, carbon vs Carbide faces.

All data is subject to change without notice.

Base Assembly

Nozzle Schedule					
Nozzle	Size	Qty.	Description	Service	
N1	4 in.	1	150# RF FLG	Suction	
N2	4 in.	1	150# RF FLG	Vent	
N3	1 in.	1	FNPT	Service Liquid	

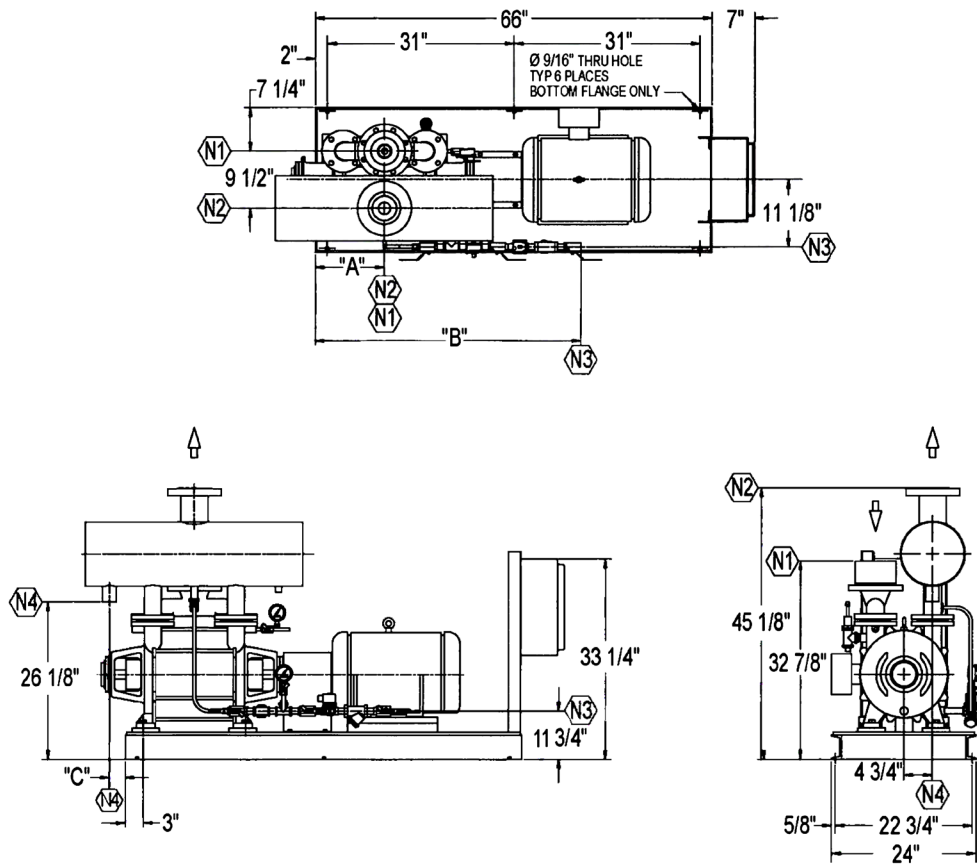


SIHI Pump Model No.	Motor HP/RPM	Motor Frame Size	Baseplate	Approx Shipping Weight (lbs)	A	D
LPHR-60520	25/1750	284T F1	B5166	1091	11-1/2 in.	5/8 in.
LPHR-60527	40/1750	324T F1	B5166	1351	12-7/8 in.	5/8 in.

Dimensions are subject to change, consult factory for certified drawing if required.

XBAR Standard Package

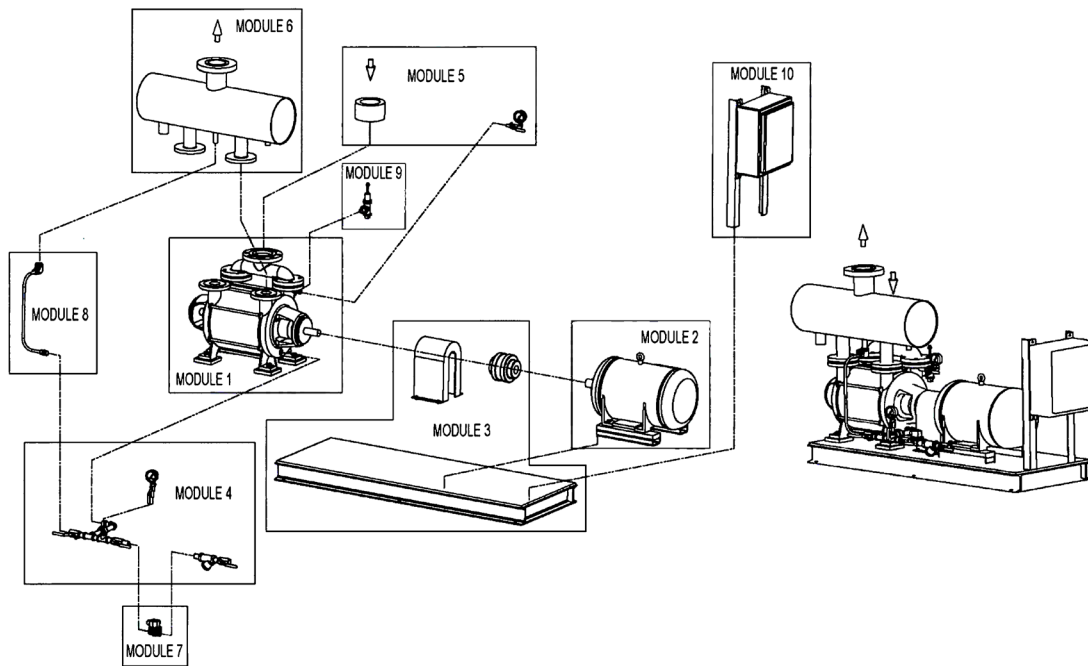
Nozzle Schedule				
Nozzle	Size	Qty.	Description	Service
N1	4 in.	1	150# RF FLG	Suction
N2	4 in.	1	150# RF FLG	Vent
N3	3/4 in.	1	FNPT	Service Liquid
N4	1-1/2 in.	1	MNPT	Overflow



SIHI Pump Model No.	Motor HP/RPM	Motor Frame Size	Xba Tank Model No	Baseplat	Approx Shipping Weight	A	B	C
XBAR-60520	25/1750	284T F1	4020	B5166	1486	11-1/2 in.	44-1/8 in.	2-1/2 in.
XBAR-60527	40/1750	324T F1	4027	B5166	1764	12-7/8 in.	45-1/2 in.	1-1/8 in.

Dimensions are subject to change, consult factory for certified drawing if required.

XBAR Standard Package modular construction



Pump Series:		60000 Series			
Module	Description	Details	Module Standard Construction Option		
Module 1	Pump	Material	0B	4B	
Module 2	Motor	HP	25.0 (For 60520)	40.0 (For 60527)	
		RPM	1750		
		Enclosure	TEFC	EXPF	
		Voltage	208-230/460	575	
		Phase	3		
Module 3	Base Assembly	Base/Coupling/Guard	Channel Base & Flex Coupling & Guard to OSHA Guidelines		
Module 4	Service liquid line (less solenoid valve)	Valve/Piping	Bronze/CS	CS/CS	Stainless/Stainless
Module 5	Inlet Vacuum Line	Valve/Piping	Bronze/CS	CS/CS	Stainless/Stainless
Module 6	Discharge	Separator/Piping	CS/CS		Stainless/Stainless
Module 7	Solenoid Valve	Enclosure	NEMA 4		NEMA 7
		Voltage	24VDC	120V/60Hz	110V/50Hz
		Material	Bronze		Stainless Steel
Module 8	Recirculation Line	Valve/Tubing	Bronze/Bronze	CS/CS	Stainless/Stainless
Module 9	Vacuum Relief Valve	Material	Bronze	Iron	Stainless Steel
Module 10	Control	Enclosure	NEMA 4		NEMA 7
		Voltage	230	460	575

All data is subject to change without notice.



Flowserve Corporation
5215 North O'Connor Blvd.
Suite 700
Irving, Texas 75039-5421 USA
Flowserve.com

1948 Foreman Drive
Cookeville, TN 38502
Phone: +1-931-432-4021 USA

PUDS001161 (EN/AQ) August 2023

©2023 Flowserve Corporation. All rights reserved. This document contains registered and unregistered trademarks of Flowserve Corporation. Other company product or service names may be trademarks or service marks of their respective companies.