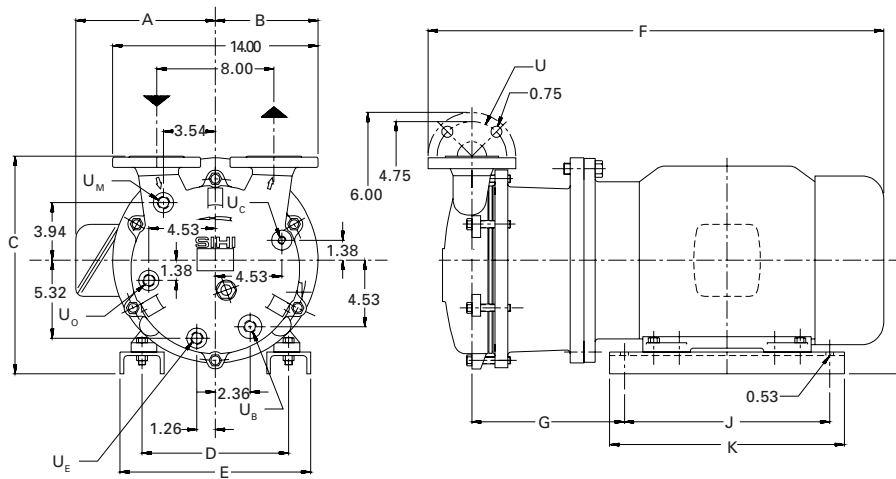


Dimensions (inches)

PUMP MODEL	A	B	C	D	E	F	G	H	J	K
LEM 250	9.49	7.00	14.90	10.00	12.50	30.44	10.41	7.75	14.00	16.00

Dimensions are for the AT/BT motors only. Please consult the factory for alternate enclosures. For connection sizes/ratings and motor sizes refer to engineering data table on reverse.



Capacity Table

Pump Model - LEM 250														
Speed (RPM)	6" Hg V. 608 Torr		12" Hg V. 455 Torr		18" Hg V. 303 Torr		22" Hg V. 201 Torr		24" Hg V. 150 Torr		28" Hg V. 49 Torr		28.9" Hg V. 25 Torr	
	cfm	HP	cfm	HP	cfm	HP	cfm	HP	cfm	HP	cfm	HP	cfm	HP
1750	149	8.6	151	9.4	153	10.2	154	9.9	150	9.8	110	6.8	80	6.7
1450	121	5.4	123	6.4	125	6.8	126	7.0	125	6.7	90	5.0	68	4.3

This data represents average values for pumps in standard materials. Capacity in cubic feet per minute at 68°F (20°C) using 60°F (15°C) water as a service liquid. Vacuum in inches Hg. Barometric pressure at sea level 29.92" Hg abs.

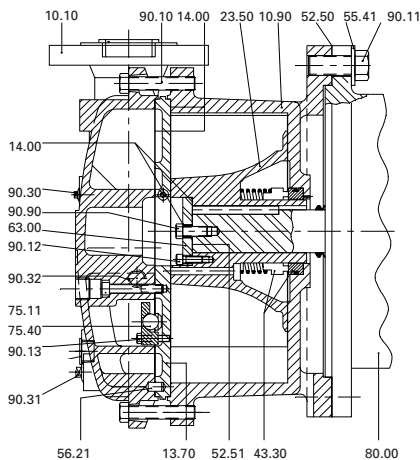
All performance data per HEI standards; subject to SIHI standard tolerances.

ENGINEERING DATA

PUMP MODEL		LEM 250
Gas Conn. Size/Rating - (U)		2"/150 RF
Svc. Liq. Line (U _g) Size/Rating		½"/NPT
Drain (U _d) Size/Rating		½"/NPT
Anti-Cav. (U _c) Size/Rating		¼"/NPT
Pump & Motor Wt. (lb.)		375
1,2 Separator Size-Recirc (Gal.)		10
Norm Max. Gas Temp. (°F)		200
Norm Max. Liq. Temp. (°F)		180
3 Sound Level @ 24" Hg (dBA)		82
Casing Max. Working Pressure (psi)		30
Pneumatic Test Pressure (psig)		15
Motor Data		
Motor Speed @ 60 HZ.		1750
Motor Speed @ 50 HZ.		1450
Std. HP/Frame @ 60 HZ.		10/254 TD
Std. HP/Frame @ 50 HZ.		8/254 TD
Std. Motor Enclosure		TEFC
Motor Code Approvals		UL, CSA
Std. Service Factor		1.15
Stock Voltages		208/230/460
		575
Alt Enclosures Available		XPFC11GPD

- 1) Max. temp. with saturated gases.
- 2) Higher temp. possible on request.
- 3) At 3 ft., 1750 RPM with motor (not certified).

SECTIONAL



MATERIALS

ITEM	OE	4B
Casing-Wetted	Cast Iron	316 SS
Intermediate	Cast Iron	316 SS
Impeller	316 SS	316 SS
4 Motor Shaft	Steel	Steel
Mechanical Shaft Seal	AAB ⁵	AAB ⁵

⁴Motor shaft is a non-wetted part ⁵ AAB =single bellows seal with viton elastomers, carbon vs SiC faces

All data subject to change without notice.

SERVICE LIQUID RATES

PUMP MODEL- LEM 250															
Pump Speed	12" Hg V. 455 Torr			16" Hg V. 354 Torr			20" Hg V. 252 Torr			24" Hg V. 150 Torr			28" Hg V. 49 Torr		
	A	B	C	A	B	C	A	B	C	A	B	C	A	B	C
1750		1.7	1.3	2.0	1.4		2.2	1.5		2.4	1.6		2.2	1.4	
1450	3.3	1.0	0.6	3.8	1.7	1.1	4.3	1.9	1.2	4.7	2.0	1.3	5.2	1.7	1.0

Column 'A' is the flow in USGPM required - once through.

Column 'B' is the make-up flow required when make-up water is 5°C (9°F) cooler than service water.

Column 'C' is the make-up flow when make-up water is 10°C (18°F) cooler than service water.

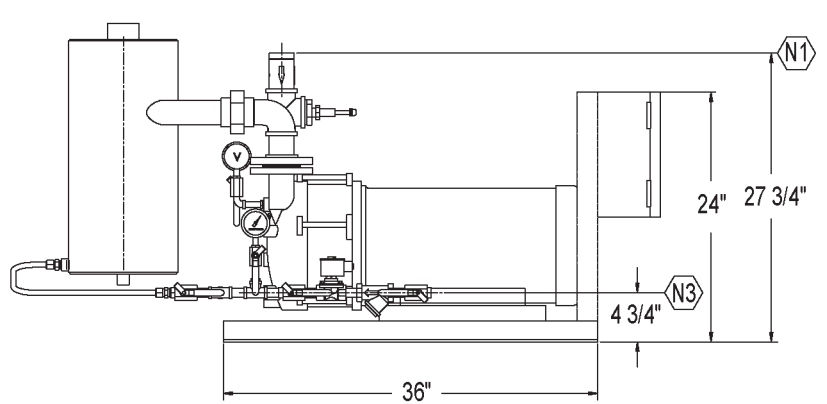
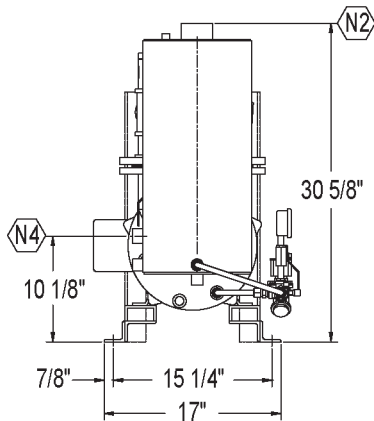
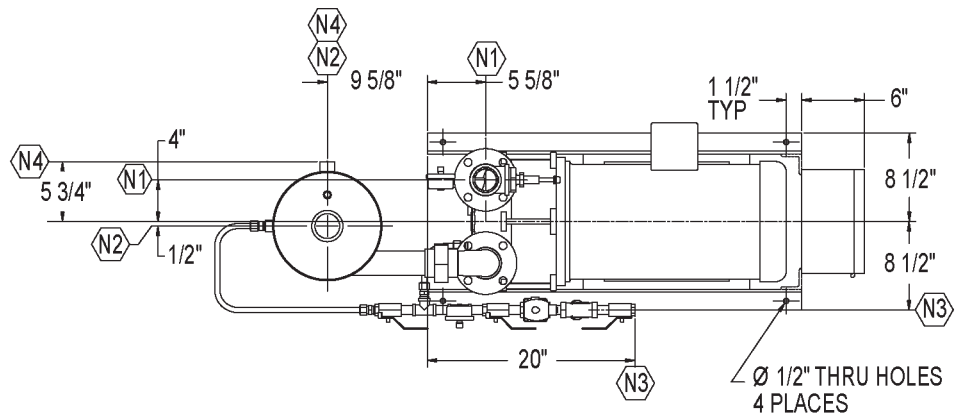
Note: The service liquid supply pressure may vary with pump speed and vacuum level. Please consult factory engineering department for additional information.

PARTS LIST

10.10	Cover
10.90	Centerbody
13.70	Intermediate
14.00	Gasket-Liquid
23.50	Impeller
43.30	Mechanical Seal
52.50	Shim Set
52.51	Shim Set
55.41	Washer
56.20	Locating Pin
56.21	Locating Pin
63.00	Impeller Plate
75.11	Orifice Plate
75.40	Orifice Ball
80.00	Motor
90.10	Bolt
90.11	Bolt
90.12	Cylinder Screw
90.13	Bolt
90.30	Plug
90.31	Plug
90.32	Plug
90.90	Bolt

XBAR 250 STANDARD PACKAGE

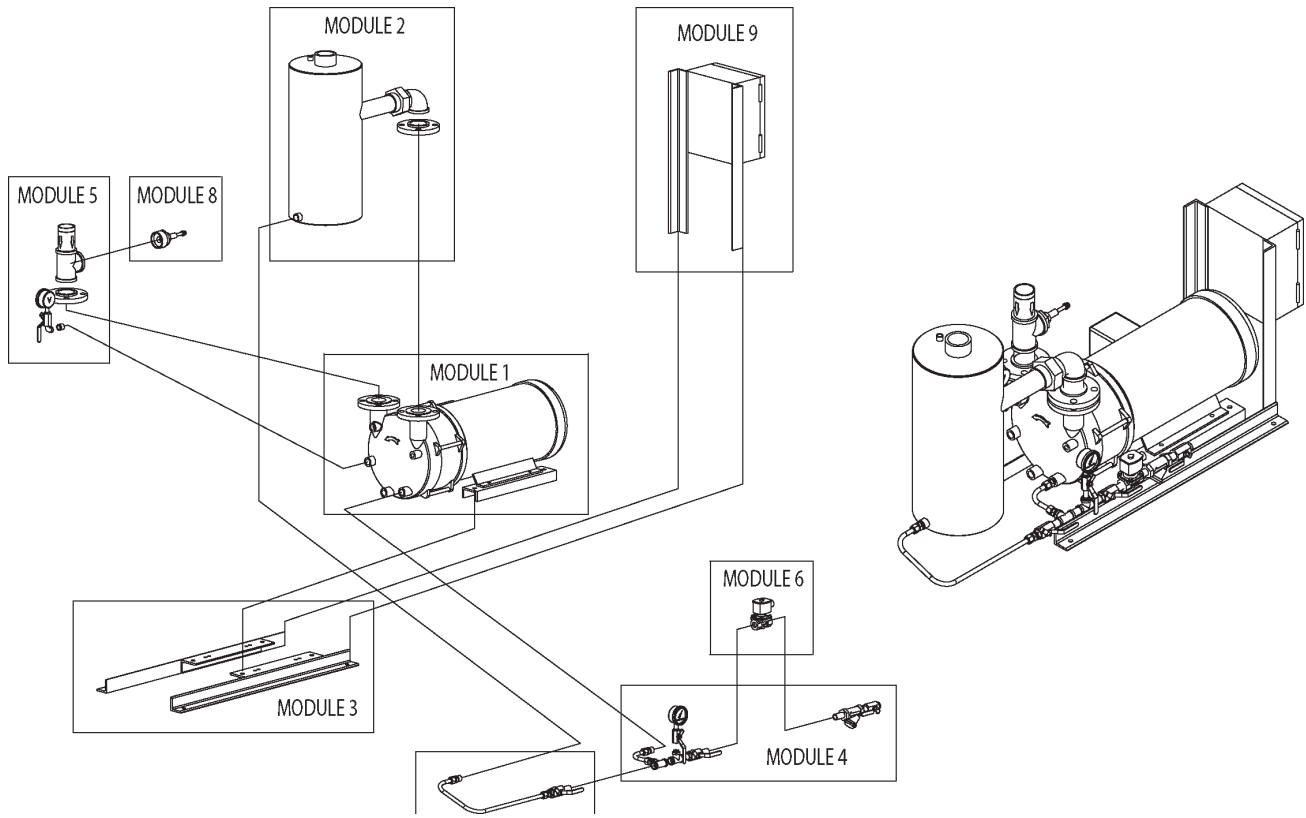
Nozzle Schedule				
Nozzle	Size	Qty.	Description	Service
N1	2"	1	MNPT	Suction
N2	2"	1	FNPT	Vent
N3	1/2"	1	FNPT	Service Liquid
N4	1-1/2"	1	FNPT	Overflow



System Model No.	SIHI Pump Model No.	Motor HP/RPM	Motor Frame Size	Xba Tank Model No.	Baseplate	Approx Shipping Weight
XBAR 250	LEM 250	10/1750	254TD	1223/1260	B2390-2	494

Dimensions subject to change, consult factory for certified drawing if required.

XBAR STANDARD PACKAGE MODULAR CONSTRUCTION



Pump Series:		250Series			
Module	Description	Details	Module Standard Construction Options		
Module 1	Pump	Material	0A	0E	4B
	Motor	HP	10		
		RPM	1750		
		Enclosure	TEFC	EXPF	
		Voltage	208-230/460	575	115/230
Phase	3	3	1		
Module 2	Discharge	Separator / Piping	CS / Bronze	CS / Stainless	Stainless / Stainless
Module 3	Baseplate		Rail Base		
Module 4	Service Liquid Line (less solenoid valve)	Valve / Piping	Bronze / CS	CS / CS	Stainless / Stainless
Module 5	Inlet Vacuum Line	Valve / Piping	Bronze / CS	CS / CS	Stainless / Stainless
Module 6	Solenoid Valve	Enclosure	NEMA 4		NEMA 7
		Voltage	24VDC	120V/60Hz	110V/50Hz
		Material	Bronze		Stainless Steel
Module 7	Recirculation Line	Valve / Tubing	Bronze / Bronze	CS / CS	Stainless / Stainless
Module 8	Vacuum Relief Valve	Material	Bronze	Iron	Stainless Steel
Module 9	Control Panel	Enclosure	NEMA 4		NEMA 7
		Voltage	230	460	575