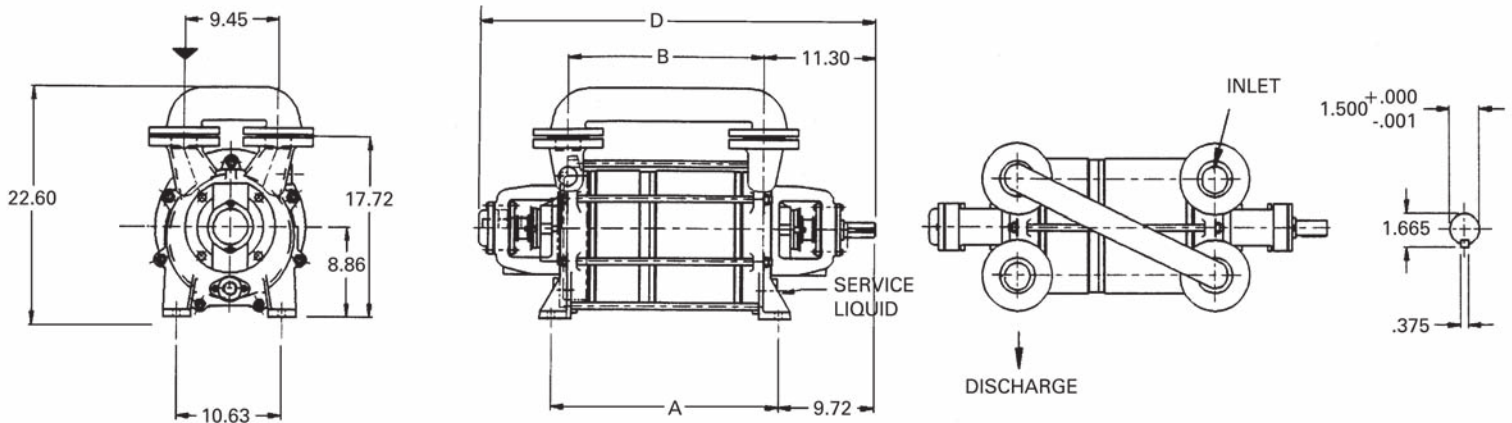


Dimensions (inches)

PUMP MODEL	A	B	D
65320	22.83	19.69	39.88
65327	25.43	22.28	42.48

For connection sizes/ratings and motor sizes refer to engineering data table on reverse.



For baseplate mounting please obtain factory certified dimensions.

Capacity Table

Pump Model - LPH 65320														
Pump Speed (RPM)	20" Hg. 252 Torr		22.5" Hg. 188 Torr		25" Hg. 125 Torr		27.5" Hg. 61.5 Torr		28" Hg. 49 Torr		28.7" Hg. 31 Torr		28.9" Hg. 25 Torr	
	acfm	HP	acfm	HP	acfm	HP	acfm	HP	acfm	HP	acfm	HP	acfm	HP
1750	330	29	340	29	345	30	320	28	305	27	235	27	210	27
1450	285	21	285	21	290	21	290	19	270	19	210	19	190	19
1150	200	15	210	15	220	15	220	12	215	12	175	12	160	12
Pump Model - LPH 65327														
1750	385	35	395	35	410	35	395	29	360	29	255	29	210	29
1450	330	24	340	25	350	23	350	20	335	20	240	20	200	20
1150	245	16	255	17	280	16	280	14	260	14	200	14	180	14

This data represents average values for pumps in standard materials. Capacity in cubic feet per minute at 68°F (20°C) using 60°F (15°C) water as service liquid. Vacuum in inches HG. Barometric pressure at sea level 29.92". Hg. abs. (760 Torr).

ENGINEERING DATA

PUMP MODEL	65320	65327
Gas Conn. Size/Rating	2½"/150RF	2½"/150RF
Ser. Liq. Line Size/Rating	1"/NPT	1"/NPT
Cont. Drain Size/Rating	½"/NPT	½"/NPT
Motor (@ 1750 rpm) HP	30	40
Bare Pump Wt. (lb)	480	540
Pump & Motor Unit Wt. (lb)	1215	1433
Min. V-Belt Sheave Dia.	6.3"	6.3"
Separator Model-XBA	2541	2541
Separator Size-Recirc. (USG)	30	30
1) Norm Max. Gas Temp. (°F)	200	200
2) Max. Serv. Liq. Temp (°F)	180	180
3) Sound Level @ 27.6 HgV(dBA)	79	79
Moment of Inertia Wr ² (lb.ft ²)	7.58	9.00
Casing Max. Working Pressure (psi)	30	30
Pneumatic Test Pressure (psig)	15	15

- 1) Max. gas temperature with saturated gases.
- 2) Higher temperatures possible on request.
- 3) At 3 ft., 1750 RPM without motor (not certified).

SERVICE LIQUID RATES

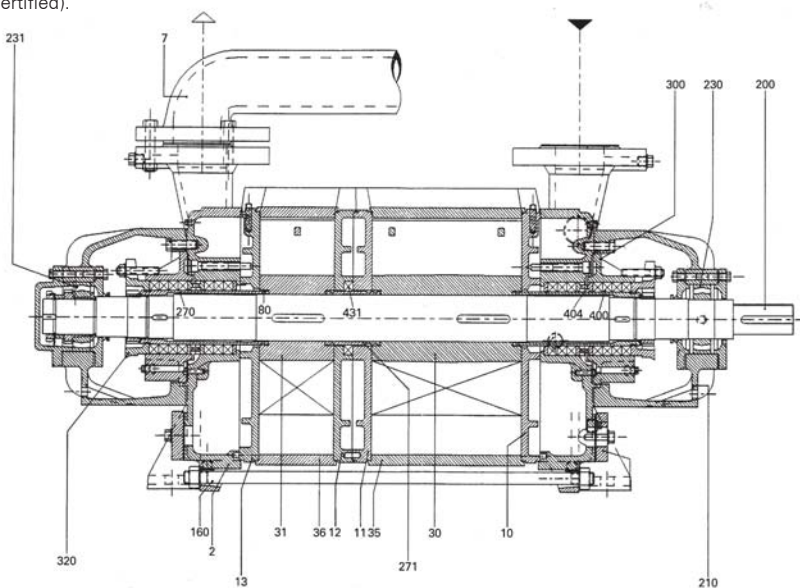
PUMP MODEL-LPH 65320															
Pump Speed (RPM)	20" Hg 252 Torr			25" Hg 125 Torr			28" Hg 49 Torr			28.7" Hg 31 Torr			28.9" Hg 25 Torr		
	A	B	C	A	B	C	A	B	C	A	B	C	A	B	C
1750		4.7	3.5		5.4	3.9		5.4	3.8		5.5	3.8		5.6	3.8
1450	7.3	4.3	2.9	8.8	4.6	3.1	9.7	4.6	3.0	10.1	4.7	3.0	10.2	4.7	3.0
1150		3.5	2.3		3.8	2.4		3.6	2.2		3.6	2.2		3.6	2.2

PUMP MODEL-LPH 65327															
Pump Speed (RPM)	20" Hg 252 Torr			25" Hg 125 Torr			28" Hg 49 Torr			28.7" Hg 31 Torr			28.9" Hg 25 Torr		
	A	B	C	A	B	C	A	B	C	A	B	C	A	B	C
1750		5.1	3.9		5.8	4.3		5.8	4.1		5.9	4.2		6.0	4.2
1450	7.3	4.5	3.3	8.8	4.9	3.4	9.7	4.9	3.3	10.1	4.9	3.3	10.2	5.0	3.3
1150		3.7	2.5		4.1	2.7		4.0	2.5		4.0	2.5		4.0	2.5

Column 'A' is the flow in GPM required - once through.
 Column 'B' is the make-up flow required when make-up water is 5°C (9°F) cooler than service water.
 Column 'C' is the make-up flow when make-up water is 10°C (18°F) cooler than service water.

Note: The service liquid supply pressure may vary with pump speed and vacuum level. Please consult factory engineering department for additional information.

SECTIONAL



*Standard rotation "AB" (clockwise) viewed from driven end. "AL" (counter-clockwise) upon request.

PARTS LIST

1 Suction Cover	30 Impeller	200 Shaft	300 Stuffing Box Flange
2 Discharge Cover	31 Impeller	210 Bearing Housing	320 Gland
7 Bypass Manifold	35 Centerbody	230 Bearing	400 Packing
10 Intermediate	36 Centerbody	231 Bearing	404 Lantern Ring
11 Intermediate	80 O-ring	270 Shaft Sleeve	431 Packing Ring
12 Intermediate	160 Tie Bolt Assembly	271 Shaft Sleeve	
13 Intermediate			

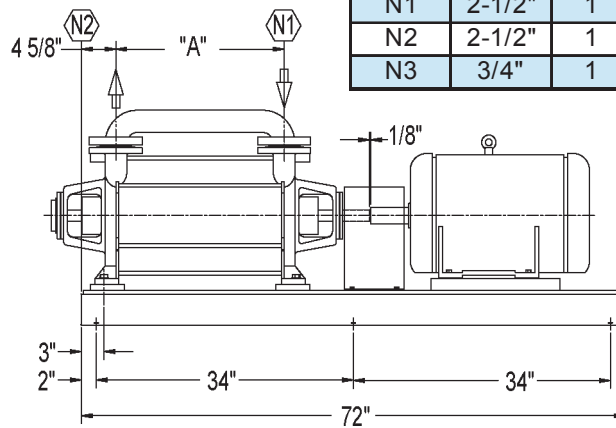
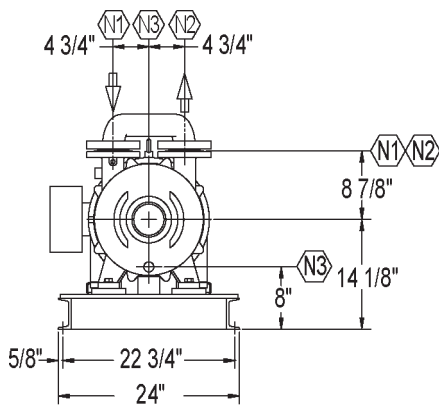
MATERIALS

ITEM	0B	4B
Casing - Wetted	Cast Iron	316 SS
Intermediates	Cast Iron	316 SS
Impeller(s)	Ductile Iron	316 SS
Shaft ⁴	420 SS QT	431 SS
Shaft Sleeves	420 SS	316 SS
Shaft Sealing	ADB ⁵	ADB ⁵
Casing- Non Wetted	Cast Iron	Cast Iron

⁴ Shaft is a non-wetted part. ⁵ADB = single o-ring pusher seal with viton o-rings, carbon vs. SiC faces

All data subject to change without notice.

BASE ASSEMBLY

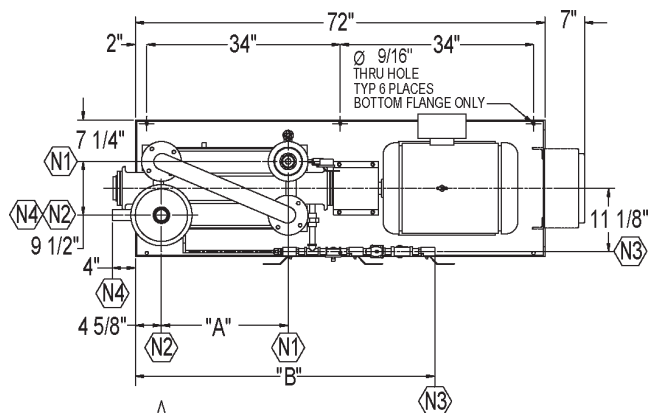


Nozzle Schedule				
Nozzle	Size	Qty.	Description	Service
N1	2-1/2"	1	150# RF FLG	Suction
N2	2-1/2"	1	MNPT	Vent
N3	3/4"	1	FNPT	Service Liquid

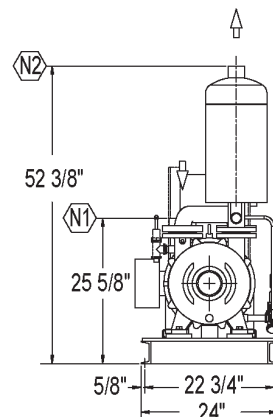
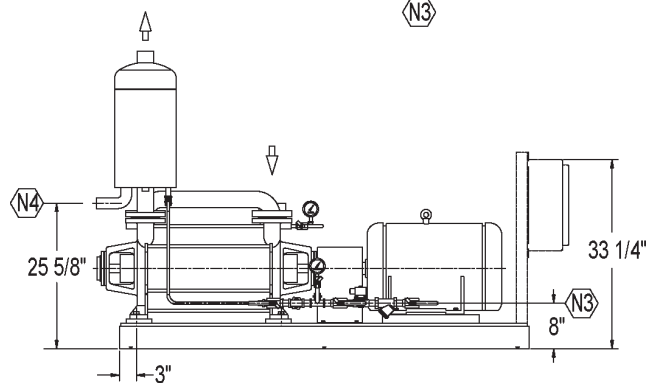
SIHI Pump Model No.	Motor HP/RPM	Motor Frame Size	Baseplate	Approx Shipping Weight	A
LPHR-65320	30 / 1750	286T F1	B712-11	1265	19-3/4"
LPHR-65327	40 / 1750	324T F1	B712-11	1467	22-1/4"

Dimensions subject to change, consult factory for certified drawing if required.

XBAR STANDARD PACKAGE



Nozzle Schedule				
Nozzle	Size	Qty.	Description	Service
N1	2-1/2"	1	150# RF FLG	Suction
N2	2-1/2"	1	MNPT	Vent
N3	3/4"	1	FNPT	Service Liquid
N4	1-1/2"	1	MNPT	Overflow



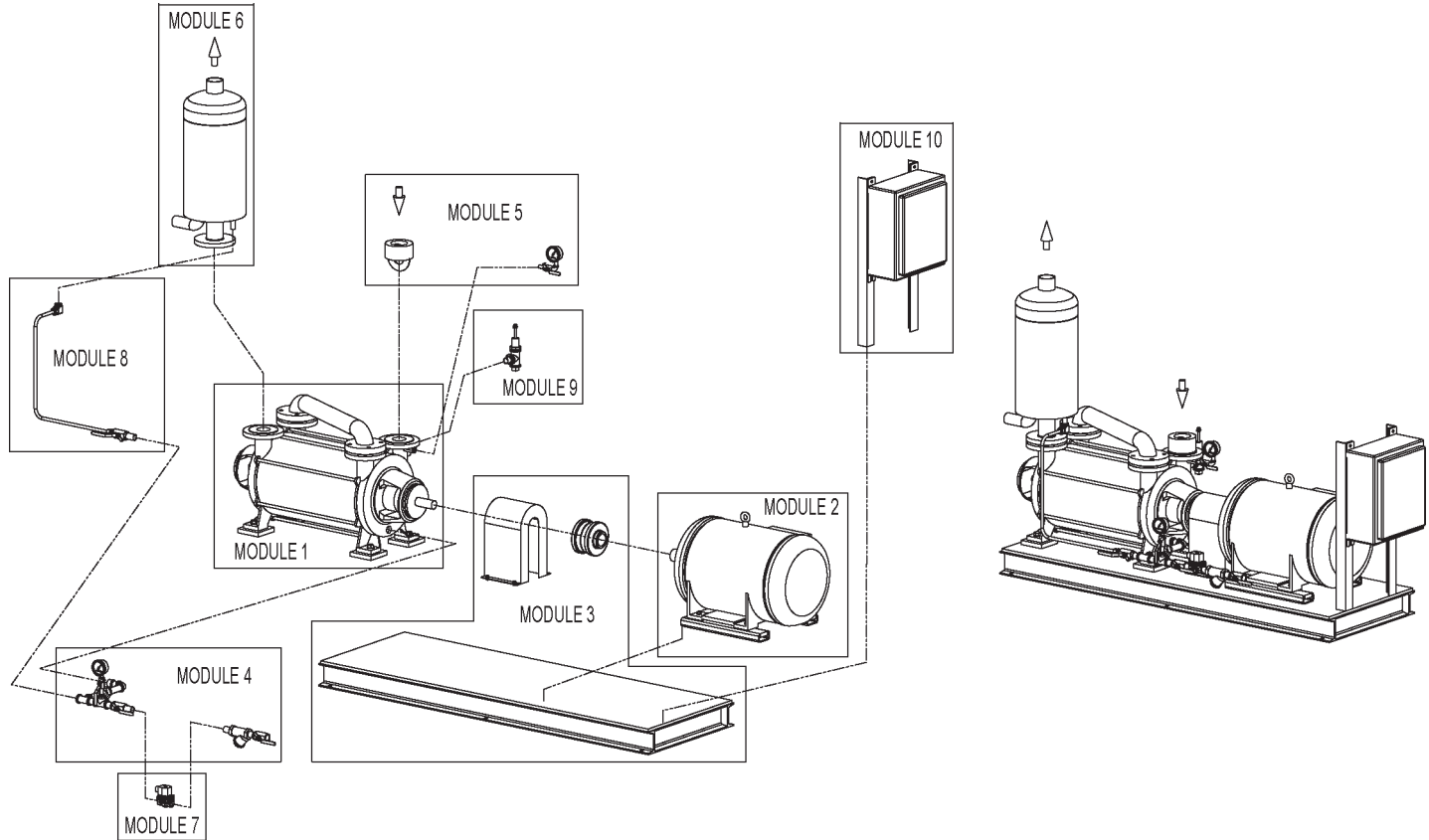
System Model No.	Motor HPRPM	Motor Frame Size	Xba Tank Model No.	Baseplate	Approx Shipping Weight	A	B
XBAR-65320	30 / 1750	286T F1	2541	B712-11	1392	19-3/4"	51-3/8"
XBAR-65327	40 / 1750	324T F1	2541	B712-11	1594	22-1/4"	52-5/8"

Dimensions subject to change, consult factory for certified drawing if required.

All data subject to change without notice.

Printed in U.S.A.

XBAR STANDARD PACKAGE MODULAR CONSTRUCTION



Pump Series:		65000 Series			
Module	Description	Details	Module Standard Construction Options		
Module 1	Pump	Material	0B		4B
Module 2	Motor	HP	30.0		40.0
		RPM	1750		
		Enclosure	TEFC		EXPF
		Voltage	208-230/460		575
		Phase	3		
Module 3	Base Assembly	Base / Coupling / Guard	Channel Base & Flex Coupling & Guard to OSHA Guidelines		
Module 4	Service Liquid Line (less solenoid valve)	Valve / Piping	Bronze / CS	CS / CS	Stainless / Stainless
Module 5	Inlet Vacuum Line	Valve / Piping	Bronze / CS	CS / CS	Stainless / Stainless
Module 6	Discharge	Separator / Piping	CS / CS		Stainless / Stainless
Module 7	Solenoid Valve	Enclosure	NEMA 4		NEMA 7
		Voltage	24VDC	120V/60Hz	110V/50Hz
		Material	Bronze		Stainless Steel
Module 8	Recirculation Line	Valve / Tubing	Bronze / Bronze	CS / CS	Stainless / Stainless
Module 9	Vacuum Relief Valve	Material	Bronze	Iron	Stainless Steel
Module 10	Control Panel	Enclosure	NEMA 4		NEMA 7
		Voltage	230	460	575