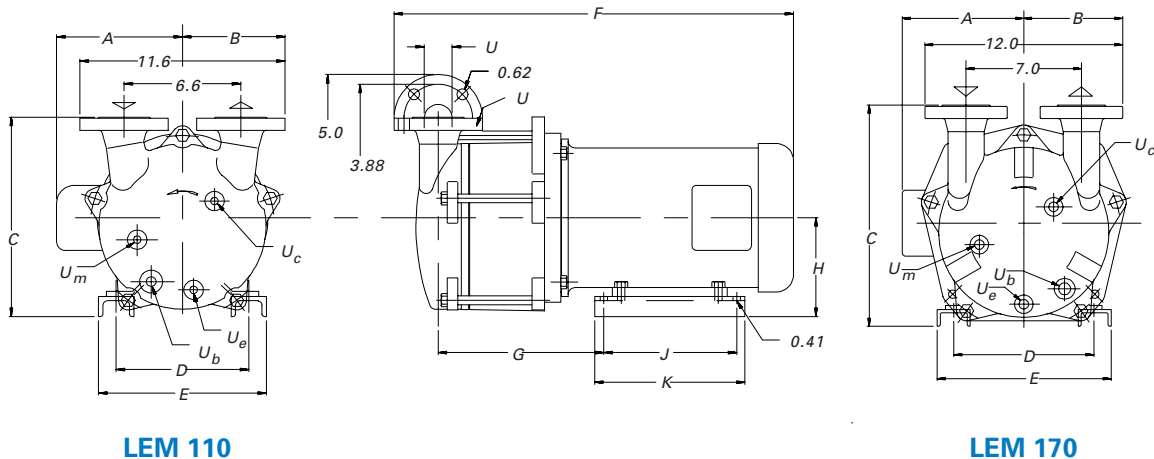


Dimensions (inches)

PUMP MODEL	A	B	C	D	E	F	G	H	J	K
LEM 110	5.97	5.80	11.25	7.50	9.50	24.64	9.36	5.50	7.50	8.50
LEM 170	7.46	6.00	13.45	8.50	10.50	26.56	10.90	6.25	9.00	10.00

Dimensions are for the AT/BT motors only. Please consult the factory for alternate enclosures. For connection sizes/ratings and motor sizes refer to engineering data table on reverse.



Capacity Table

Pump Model - LEM 110														
Speed (RPM)	6" Hg. V. 608 Torr		12" Hg. V. 455 Torr		18" Hg. V. 303 Torr		22" Hg. V. 201 Torr		24" Hg. V. 150 Torr		28" Hg. V. 49 Torr		28.9" Hg. V. 25 Torr	
	cfm	HP	cfm	HP	cfm	HP	cfm	HP	cfm	HP	cfm	HP	cfm	HP
1750	76.5	4.9	76.0	5.0	76.0	5.0	75.5	5.0	74.0	5.0	52.0	3.7	35.0	2.
Pump Model - LEM 170														
1750	102	6.2	109	7.2	116	7.5	117	7.5	113	7.5	74	5.7	46	5.0
1450	79	4.2	85	4.4	90	5.4	92	5.6	90	5.4	48	4.0	22	3.3

This data represents average values for pumps in standard materials. Capacity in cubic feet per minute at 68°F (20°C) using 60°F (15°C) water as a service liquid. Vacuum in inches Hg. Barometric pressure at sea level 29.92" Hg. abs. (760 Torr).

All performance data per HEI standards; subject to SIHI standard tolerances.

All data subject to change without notice.

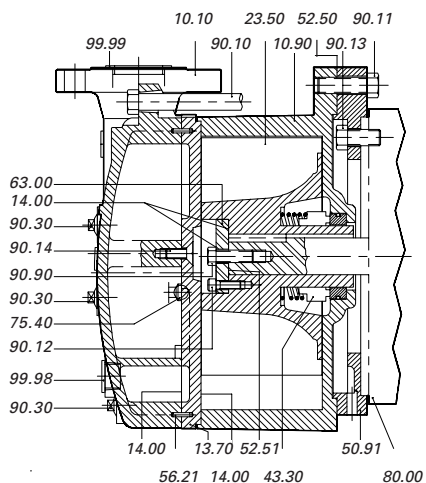


ENGINEERING DATA

	LEMA 110	LEMA 170
PUMP MODEL		
Gas Conn. Size -'U'	1)	1)
Ser. Liq. Line Qty/Size -"U _B "	½" NPT	½" NPT
Drain (U _D) & Cav. (U _C) Size	3/8" NPT	3/8" NPT
Pump & Motor Wt. (lb.)	125	150
Separator Size-Recirc (G)	10	10
2) 3) Norm Max. Gas Temp. (°F)	200	200
Norm Max. Liq. Temp. (°F)	180	180
4) Sound Level @24" Hg. (dBA)	77	79
Casing Max.Working Pressure (psi)	30	30
Pneumatic Test Pressure (psig)	15	15
Motor Data		
Motor Speed @ 60 HZ.	1750	1750
Motor Speed @ 50 HZ.	1450	1450
Std. HP/Frame @ 60 HZ.	5/184TCZ	7½/213TCZ
Std. HP/Frame @ 50 HZ.	4 / 184 TCZ	6 / 213 TCZ
Std. Motor Enclosure	TEFC	TEFC
Motor Code Approvals	UL,CSA	UL,CSA
Std. Service Factor	1.15	1.15
Stock Voltages	208/230/460	208/230/460
	575	575
Alt Enclosures Available	XPFC1GRD	XPFC1GRD

- 1) Mating flange 1½", 150# R.F.
- 2) Max. temp. with saturated gases.
- 3) Higher temp. possible on request
- 4) At 3 ft., 1750 RPM with motor (not certified)

SECTIONAL



SERVICE LIQUID RATES

PUMP MODEL- LEM 110															
Pump Speed	12" Hg. V. 455 Torr			16" Hg. V. 354 Torr			20" Hg. V. 252 Torr			24" Hg. V. 150 Torr			28" Hg. V. 49 Torr		
	A	B	C	A	B	C	A	B	C	A	B	C	A	B	C
1750	1.8	1.1	0.7	2.3	1.2	0.8	3.1	1.5	1.0	3.5	1.5	1.0	3.9	1.3	0.8
1450		--	--		--	--		--	--		--	--		--	--
PUMP MODEL- LEM 170															
1750	3.1	1.7	1.2	3.8	1.9	1.3	3.8	2.0	1.3	4.4	2.0	1.3	4.4	1.8	1.1
1450		1.4	0.9		1.6	1.0		1.7	1.1		1.7	1.1		1.4	0.8

Column 'A' is the flow in USGPM required - once through.
 Column 'B' is the make-up flow required when make-up water is 5°C (9°F) cooler than service water.
 Column 'C' is the make-up flow when make-up water is 10°C (18°F) cooler than service water.

PARTS LIST

- 10.10 Cover
- 10.90 Centerbody
- 13.70 Intermediate
- 14.00 Gasket-Liquid
- 23.50 Impeller
- 43.30 Mechanical Seal
- 50.91 Mounting Spacer
- 52.50 Shim Set
- 52.51 Shim Set
- 56.21 Locating Pin
- 63.00 Impeller Plate
- 75.40 Orifice Ball
- 80.00 Motor
- 90.10 Bolt
- 90.11 Bolt
- 90.12 Cylinder Screw
- 90.13 Bolt
- 90.14 Machine Screw
- 90.30 Plug
- 90.90 Bolt
- 99.98 Plug - Plastic
- 99.99 Plug - Plastic

MATERIALS

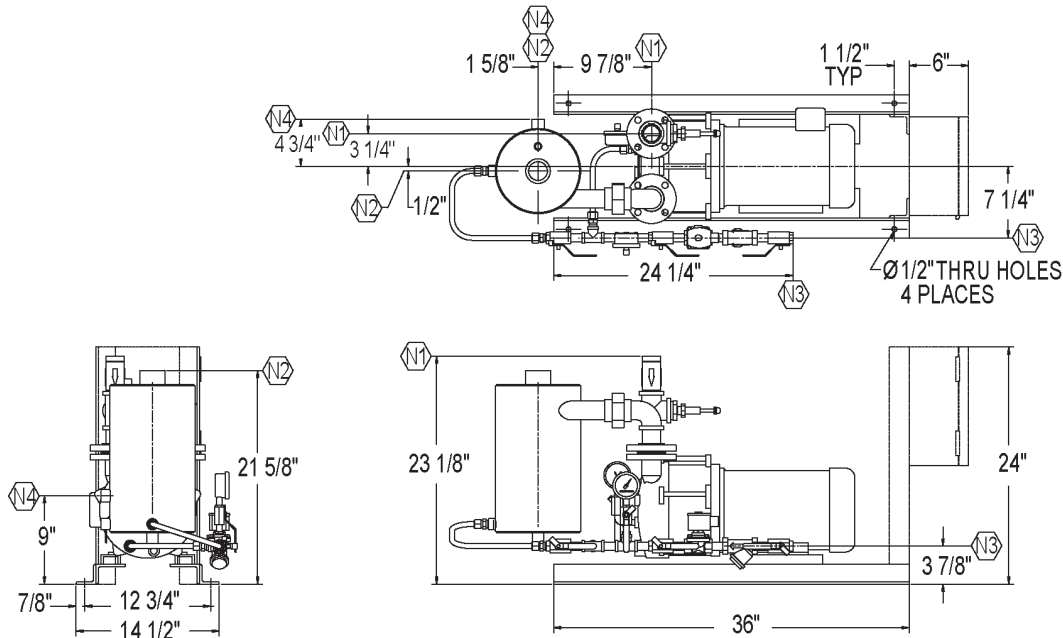
ITEM	OE	4B
Casing-Wetted	Cast Iron	316 SS
Intermediate	Cast Iron	316 SS
Impeller	316 SS	316 SS
5 Motor Shaft	Steel	Steel
Mechanical Shaft	AAB ⁶	AAB ⁶

⁵Motor shaft is a non-wetted part ⁶ AAB =single bellows seal with viton elastomers, carbon vs SiC faces

All data subject to change without notice.

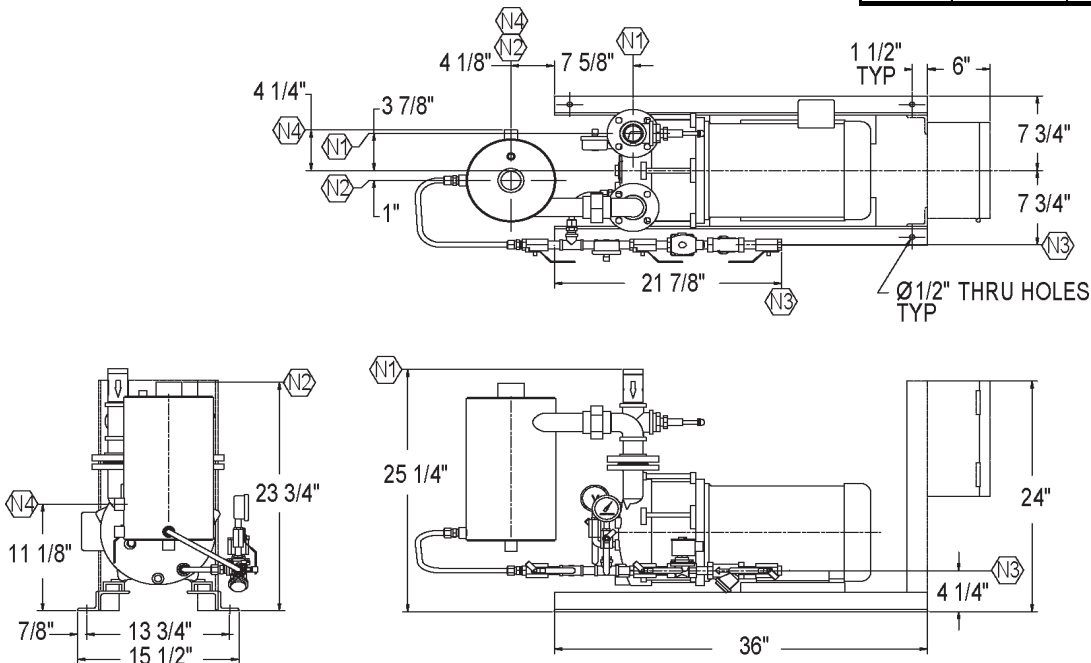


XBAR STANDARD PACKAGE XBA 110



Nozzle Schedule				
Nozzle	Size	Qty.	Description	Service
N1	1-1/2"	1	FNPT/MNPT	Suction
N2	1-1/2"	1	FNPT	Vent
N3	1/2"	1	FNPT	Service Liquid
N4	1"	1	FNPT	Overflow

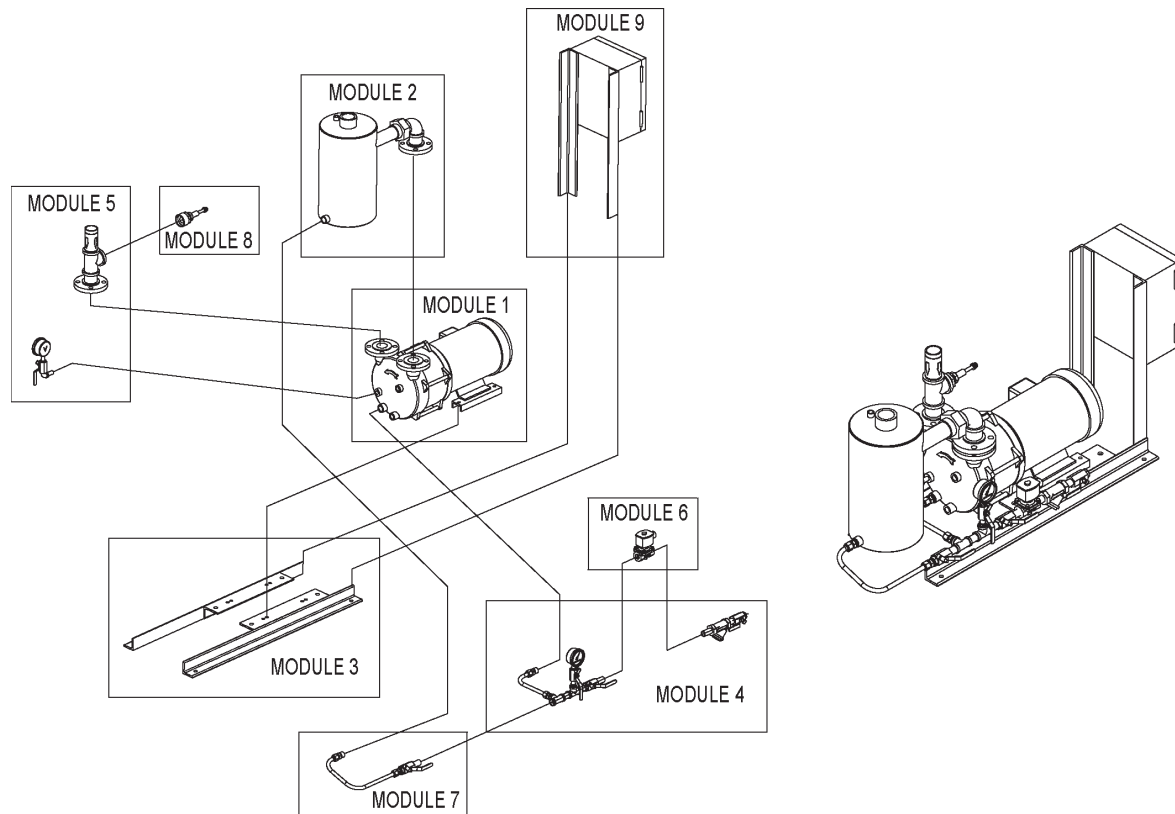
XBAR STANDARD PACKAGE XBA 170



System Model No.	SIHI Pump Model No.	Motor HP/RPM	Motor Frame Size	Xba Tank Model No.	Baseplate	Approx Shipping Weight
XBAR 110	LEM 110	5/1750	184TCZ	1080/1259	B2390-1	264
XBAR 170	LEM 170	7.5/1750	213TCZ	1080/1259	B2390-1	319

Dimensions subject to change, consult factory for certified drawing if required.

XBAR STANDARD PACKAGE MODULAR CONSTRUCTION



Pump Series:		110/170Series			
Module	Description	Details	Module Standard Construction Options		
Module 1	Pump	Material	0A	0E	4B
	Motor	HP	5.0		7.5
		RPM	1750		
		Enclosure	TEFC		EXPF
		Voltage	208-230/460	575	115/230
		Phase	3	3	1
Module 2	Discharge	Separator / Piping	CS / Bronze	CS / Stainless	Stainless / Stainless
Module 3	Baseplate		Rail Base		
Module 4	Service Liquid Line (less solenoid valve)	Valve / Piping	Bronze / CS	CS / CS	Stainless / Stainless
Module 5	Inlet Vacuum Line	Valve / Piping	Bronze / CS	CS / CS	Stainless / Stainless
Module 6	Solenoid Valve	Enclosure	NEMA 4		NEMA 7
		Voltage	24VDC	120V/60Hz	110V/50Hz
		Material	Bronze		Stainless Steel
Module 7	Recirculation Line	Valve / Tubing	Bronze / Bronze	CS / CS	Stainless / Stainless
Module 8	Vacuum Relief Valve	Material	Bronze	Iron	Stainless Steel
Module 9	Control Panel	Enclosure	NEMA 4		NEMA 7
		Voltage	230	460	575