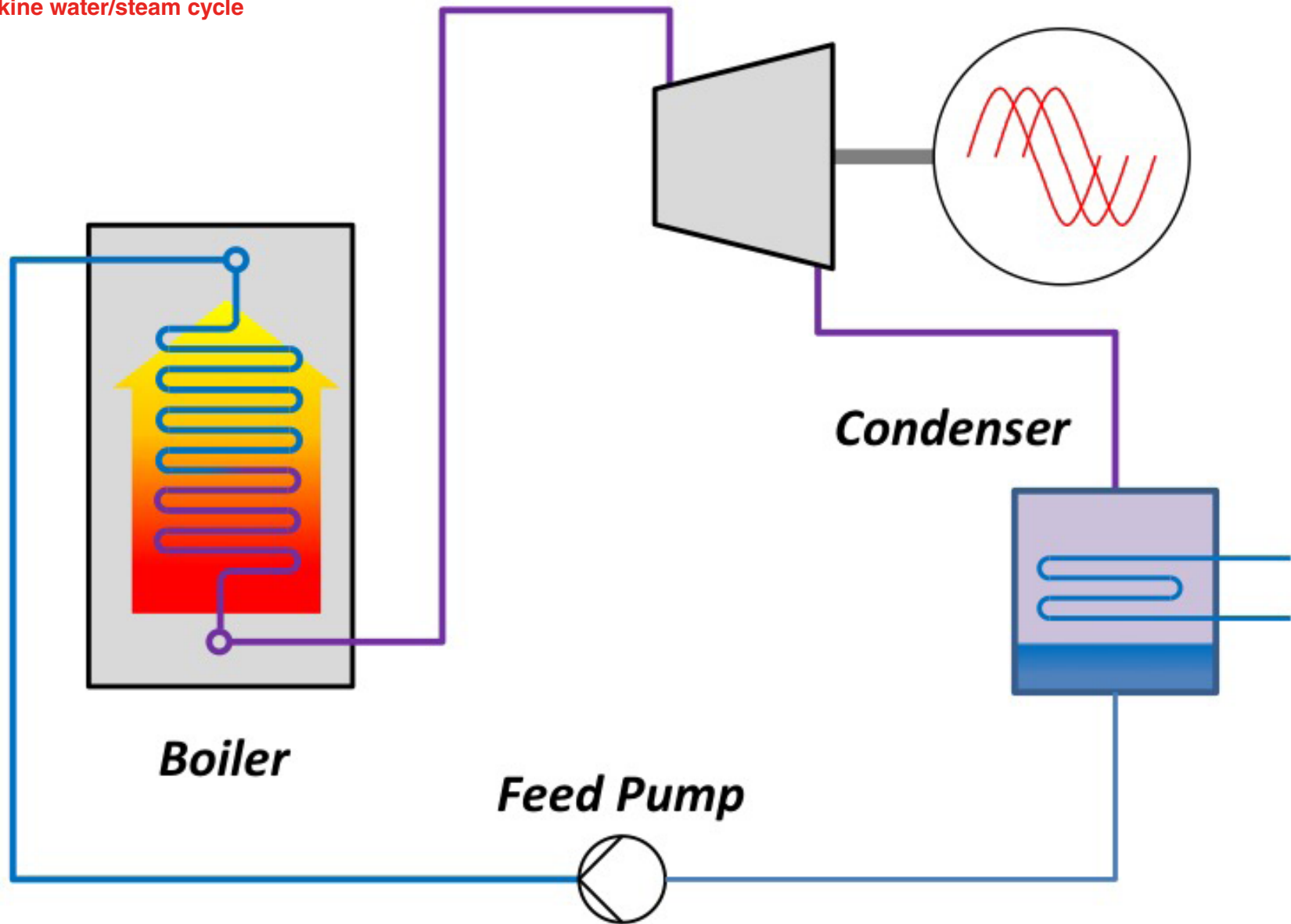


*Process Flow Diagrams*  
**CONVENTIONAL  
STEAM**

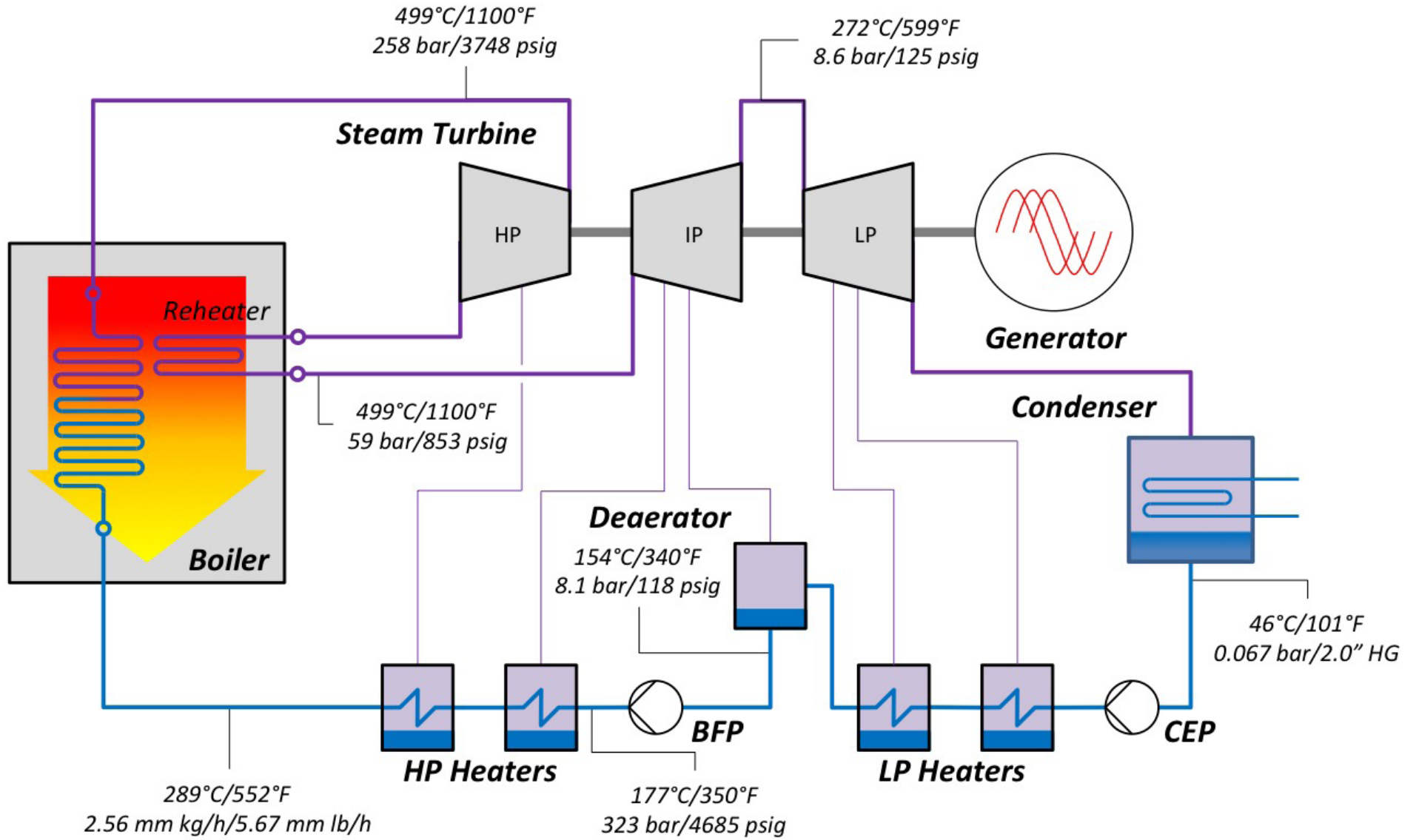


*Experience In Motion*

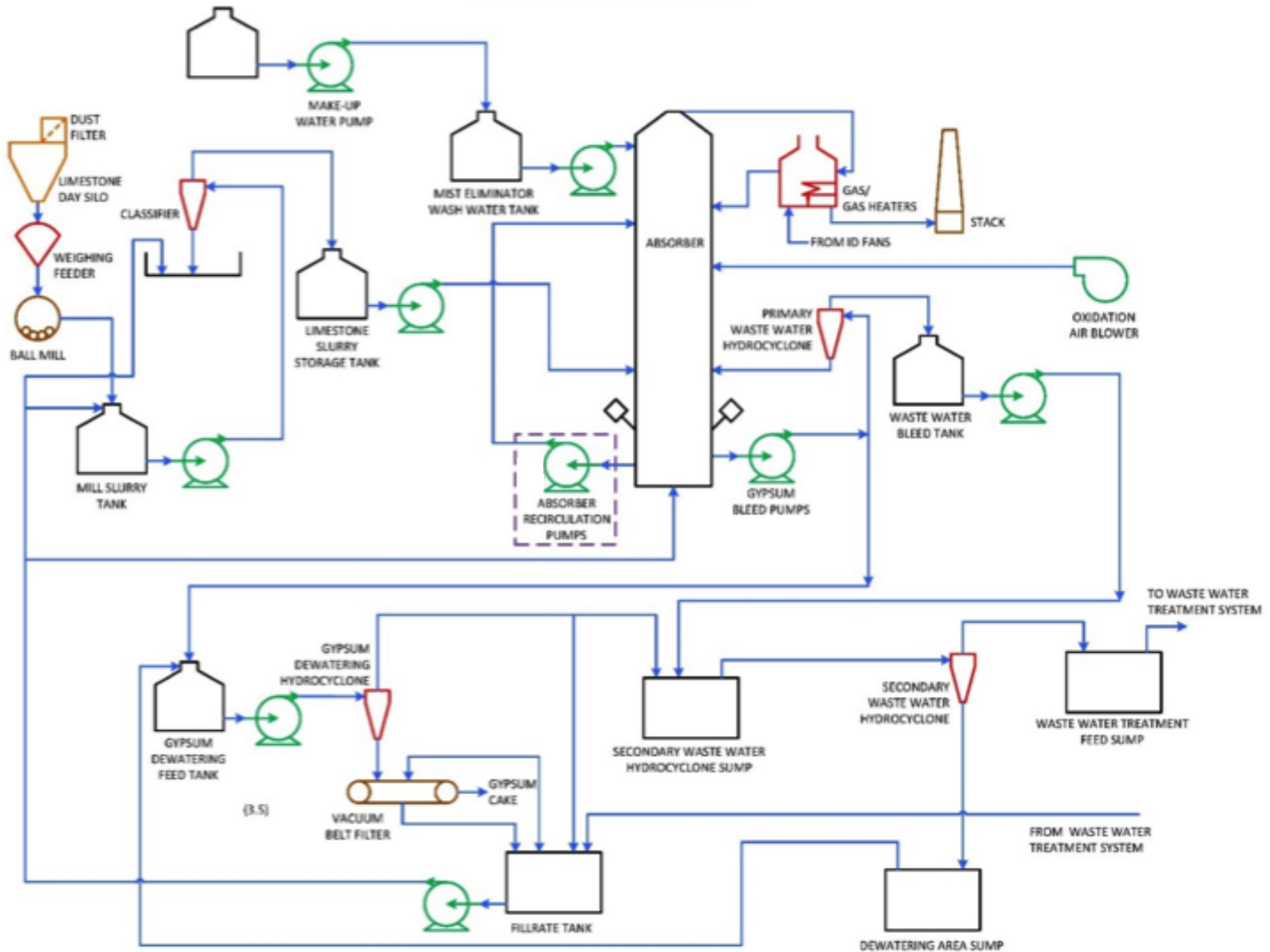
Basic Rankine water/steam cycle



**Simplified ultra-supercritical power plant  
with reheat and feedwater heating**

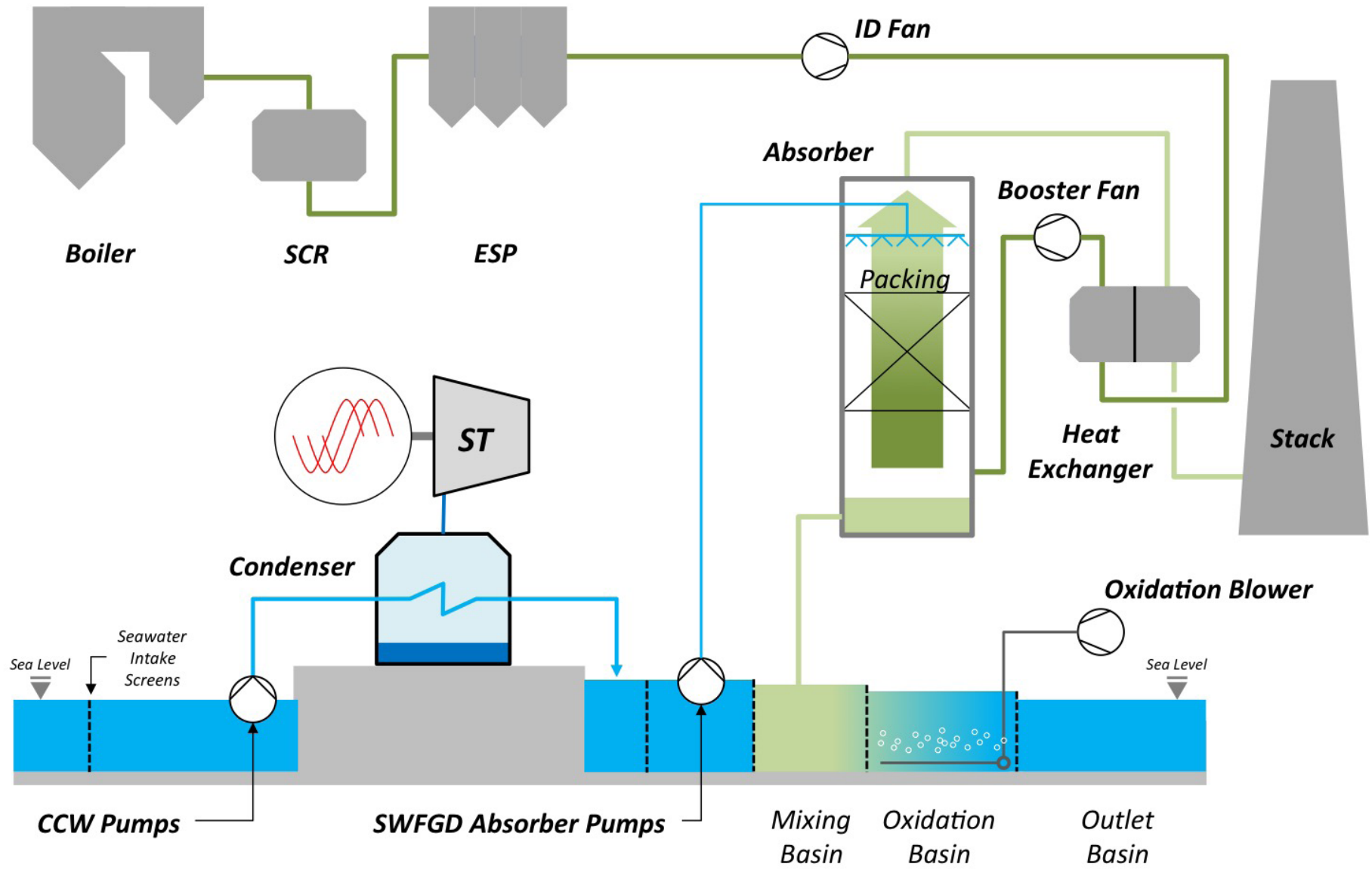


Process flow diagram of a wet limestone FGD system

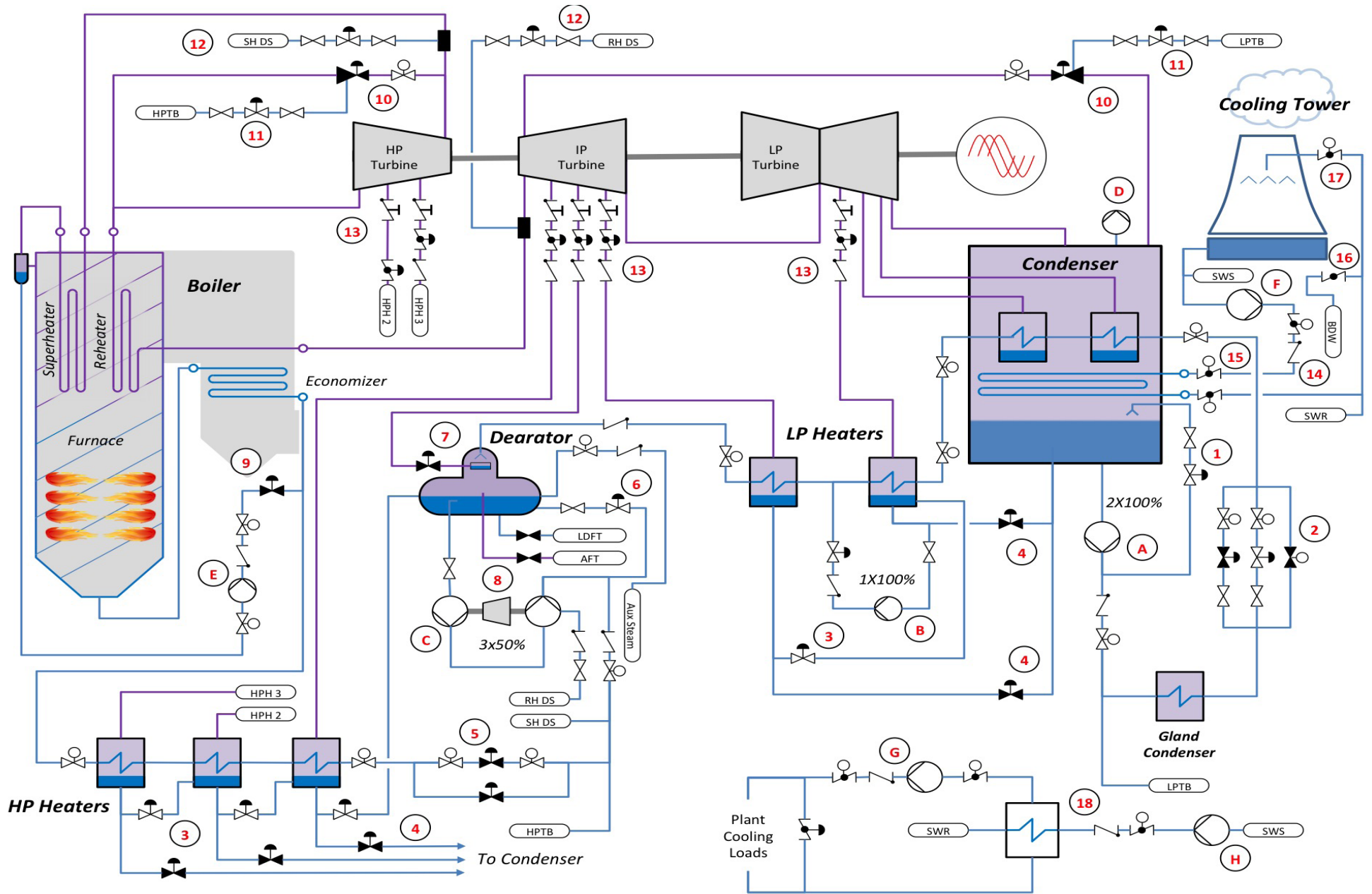




Simplified process flow diagram of a seawater FGD system

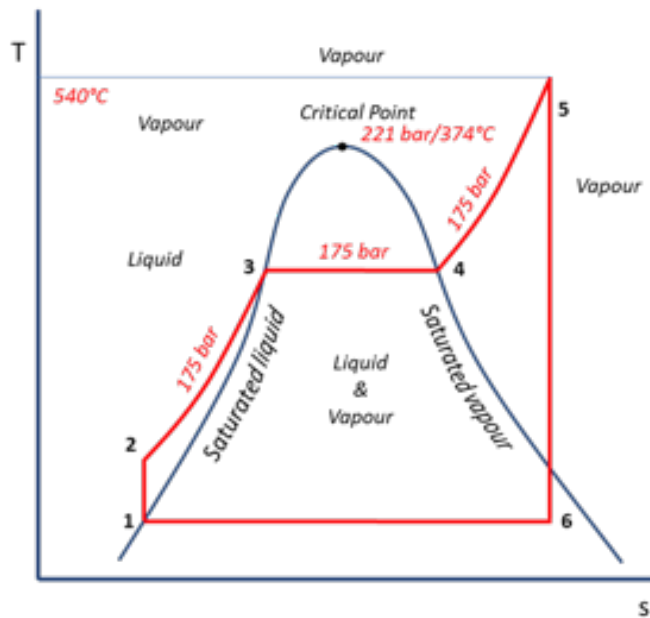
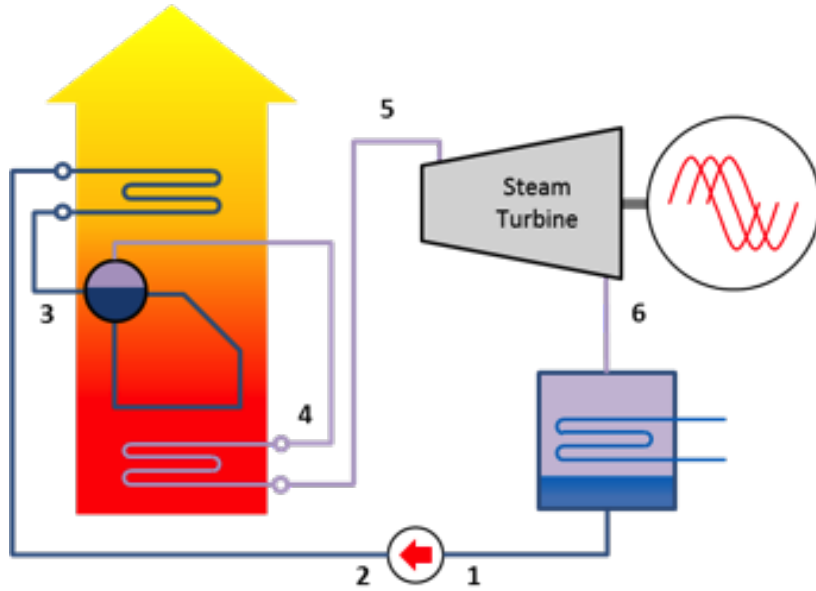


Process flow diagram of a conventional steam plant



Main pumps are letters and main valves are numbers; please refer to the Application Solutions Guide.

Subcritical Rankine Cycle



Supercritical Rankine Cycle

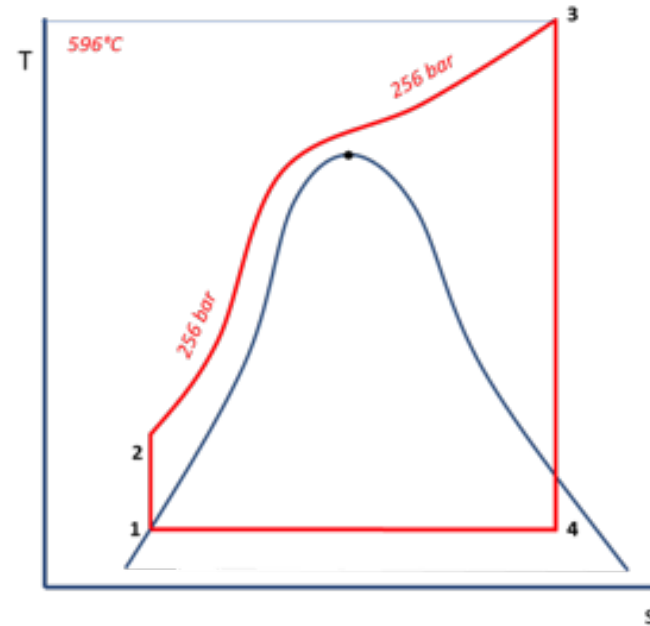
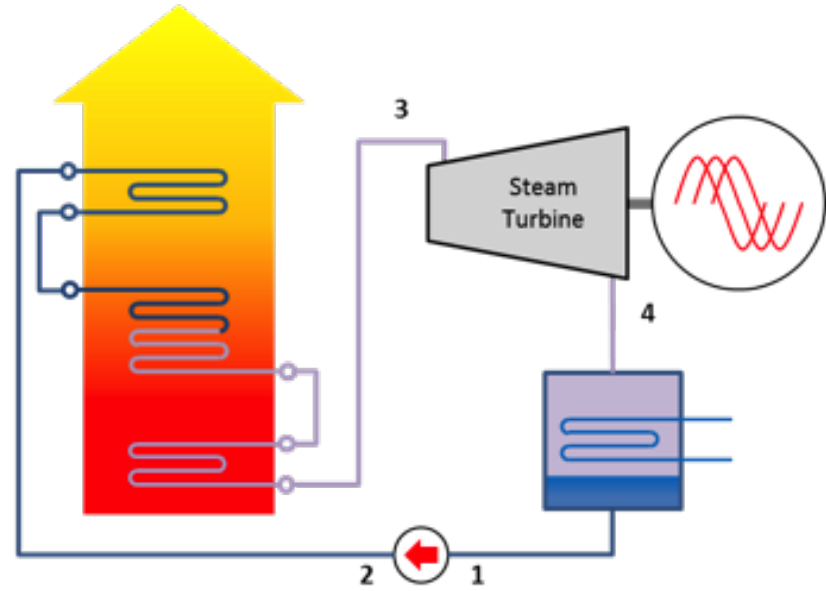
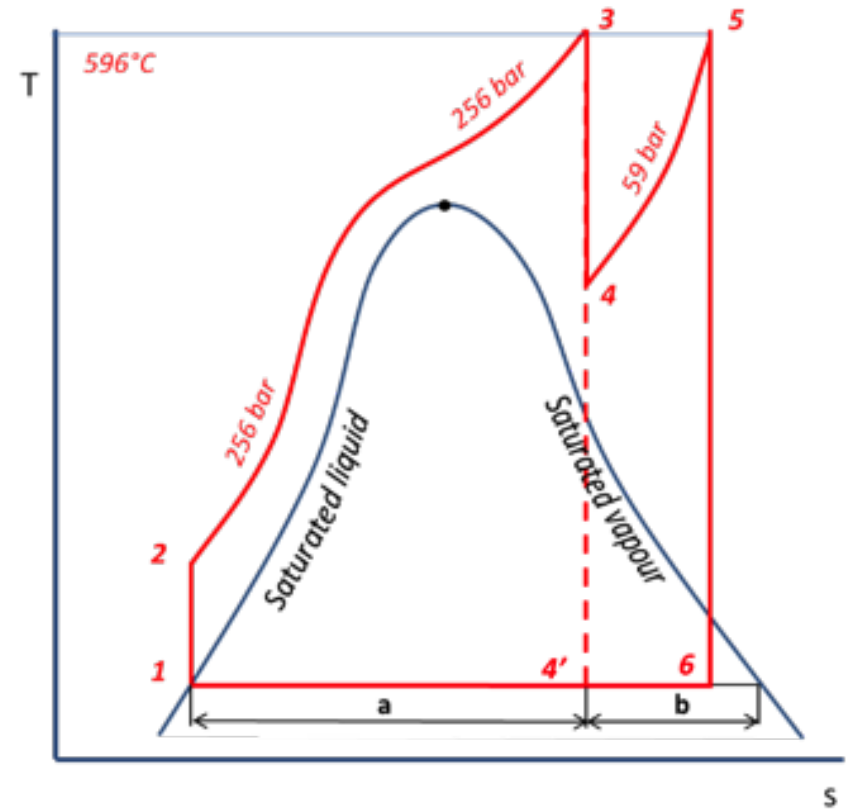
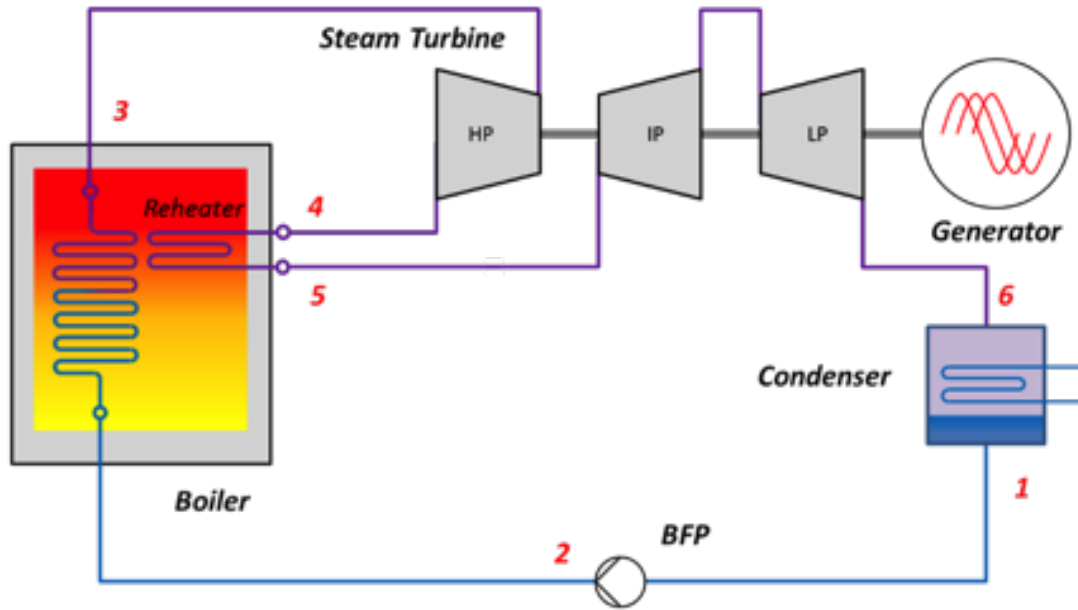


Illustration of the use of reheat in supercritical plants







North America

Latin America

Europe

Middle East

Africa

Asia-Pacific

Flowserve Corporation  
5215 North O'Connor Boulevard  
Suite 2300  
Irving, Texas 75039  
[flowserve.com](http://flowserve.com)

***Experience In Motion***

FLS-1011-Diagrams (E/AQ) ASG-Steam, December 2019 © 2019 Flowserve Corporation. All rights reserved. Kämmer, Logix, NAF, Valbart, Valtek, Flowserve, and the Flowserve design are registered marks of Flowserve Corporation. All other marks are the property of their respective owners.