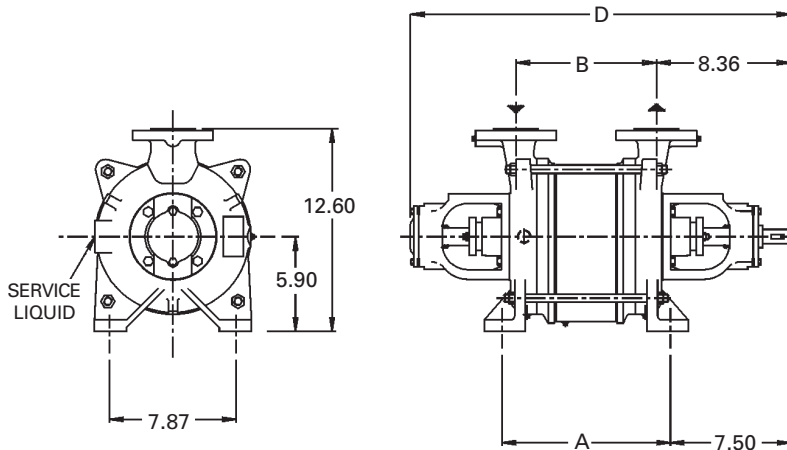


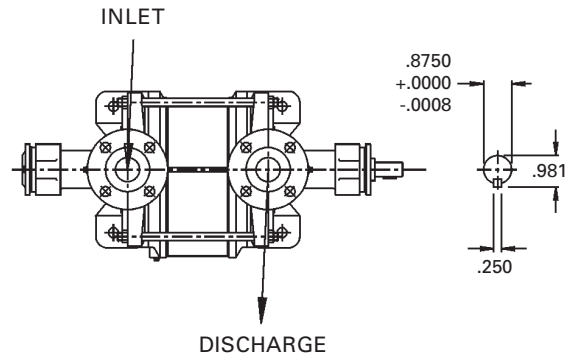
Dimensions (inches)

Pump Model	A	B	C	D
3404	7.90	6.16		21.06
3408	9.47	7.73		22.63

For connection sizes/ratings and motor sizes refer to engineering data table on reverse.



For baseplate mounting, please obtain factory certified dimensions.



Capacity Table

Pump Model - KPH 3404																	
Speed (RPM)	2 PSIG		4 PSIG		6 PSIG		8 PSIG		10 PSIG		12 PSIG		14 PSIG		15 PSIG		
	scfm	HP	scfm	HP	scfm	HP	scfm	HP	scfm	HP	scfm	HP	scfm	HP	scfm	HP	
1750	36.0	1.7	36.0	2.0	35.5	2.4	33.0	2.8	29.0	3.3	24.0	3.8	18.0	4.3	15.0	4.6	
1450	29.0	1.2	29.0	1.4	28.0	1.7	25.0	2.0	20.0	2.2							

Pump Model - KPH 3408																	
Speed (RPM)	2 PSIG		4 PSIG		6 PSIG		8 PSIG		10 PSIG		12 PSIG		14 PSIG		15 PSIG		
	scfm	HP	scfm	HP	scfm	HP	scfm	HP	scfm	HP	scfm	HP	scfm	HP	scfm	HP	
1750	66.0	3.0	66.0	3.8	66.0	4.2	66.0	5.2	66.0	5.8	63.5	6.4	59.0	7.1	56.0	7.4	
1450	52.0	2.4	51.5	3.0	50.0	3.4	45.5	3.9	45.0	4.4							

This data represents average values for pumps in standard materials. Derate capacity of stainless steel pumps by 10%. Capacity in cubic feet per minute free air at 68°F (20°C) using 60°F (16°C) water as a service liquid. Discharge pressure measured at the pump discharge flange.

## ENGINEERING DATA

PUMP MODEL	3404	3408
Gas Conn. Size/Rating (U)	1½"/150RF	1½"/150RF
Service Liq. Line Size/Rating (U <sub>s</sub> )	½"/NPT	½"/NPT
Cont. Drain Size/Rating (U <sub>se</sub> )	N/A	N/A
Motor (@ 1750 rpm) HP	5	7.5
Bare Pump Wt. (lb)	100	115
4 Direct Dr. Basemount (lb)	235	344
5 Min. V-Belt Sheave Dia.	7.9	8.8
T-Separator/Trap Model	Upon Request	Upon Request
Separator Size - Recirc. (Gal.)	24	24
1/2 Norm. Max. Gas Temp. (°F)	248	248
2 Max. Service Liq. Temp. (°F)	212	212
3 Sound Level (dBA)	70	70
Moment of Inertia Wr <sup>2</sup> (lb. ft <sup>2</sup> )	1.42	2.85
Casing Max. WP / Hydro (psi)	30/45	30/45

1. Max. gas temperature with saturated gases.
2. Higher temperatures possible on request.
3. At 3 ft., 1750 RPM w/o motor (not certified).
4. Basemount includes pump, motor, coupling, guard, and base.
5. Special pump bearings needed for V-Belt applications.

## SERVICE LIQUID RATES (USGPM)

PUMP MODEL- KPH 3404															
Pump Speed	3PSIG			6PSIG			9PSIG			12PSIG			15PSIG		
	A	B	C	A	B	C	A	B	C	A	B	C	A	B	C
1750	1.4	0.6	0.4	1.7	0.7	0.4	2.8	1.0	0.6	3.5	1.2	0.8	4.1	1.5	0.9
1450		0.4	0.3		0.6	0.3		0.8	0.5						

PUMP MODEL- KPH 3408															
Pump Speed	3PSIG			6PSIG			9PSIG			12PSIG			15PSIG		
	A	B	C	A	B	C	A	B	C	A	B	C	A	B	C
1750	1.8	0.8	0.5	2.1	1.1	0.7	3.0	1.5	1.0	4.0	1.8	1.2	5.0	2.1	1.4
1450		0.8	0.5		0.9	0.6		1.2	0.8		1.3	0.8		1.5	0.9

Column 'A' is the flow in USGPM required - once through.

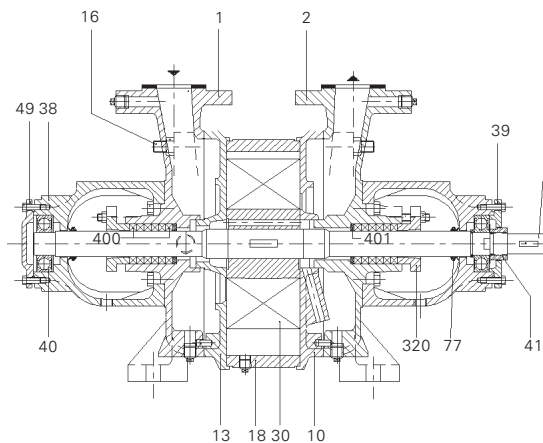
Column 'B' is the make-up flow required when make-up water is 5°C (9°F) cooler than service water.

Column 'C' is the make-up flow when make-up water is 10°C (18°F) cooler than service water.

For continuous operation, the service liquid supply pressure should be at least the suction pressure, plus 80% of the differential pressure from suction to discharge.

**Note:** The service liquid supply pressure may vary with pump speed and discharge pressure. Please consult factory engineering department for additional information.

## SECTIONAL



Standard rotation 'AB' (clockwise) viewed from driven end. 'AL' (counter clockwise) upon request.

## PARTS LIST

1. Suction Cover	16. Tie Bolt Assembly	40. Ball Bearing	77. Splash Ring
2. Discharge Cover	18. Centerbody	41. Bearing Nut	320. Gland
9. Shaft	30. Impeller	42. Spacer Ring	400. Packing
10. Intermediate	38. Bearing Housing	43. Bolt	401. Neck Ring
13. Intermediate	39. Bearing Retainer	49. Bearing Cover	

## MATERIALS

ITEM	0E	4B
Casing-Wetted	Cast Iron	316 SS
Intermediates	Cast Iron	316 SS
Impeller(s)	316 SS	316 SS
Shaft	420 SS QT	316 SS
Shaft Sleeves	N/A	N/A
Shaft Sealing	ADB <sup>6</sup>	ADB <sup>6</sup>
Casing-Non Wetted	Cast Iron	Cast Iron

<sup>6</sup>ADB = single o-ring pusher seal with viton o-rings, carbon vs. SiC faces