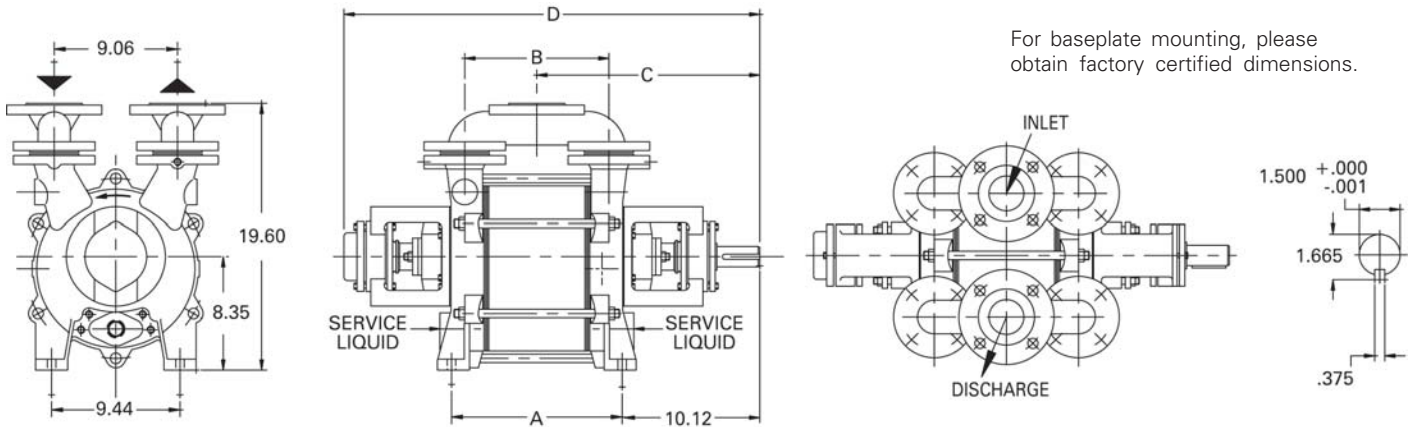


Dimensions (inches)

| Pump Model | A | B | C | D |
|------------|-------|-------|-------|-------|
| 50518 | 12.55 | 10.60 | 16.39 | 30.57 |
| 50523 | 14.63 | 12.68 | 17.43 | 32.65 |

For connection sizes/ratings and motor sizes refer to engineering data table on reverse.



Capacity Table

| Pump Model - LPH 50518 | | | | | | | | | | | | | | | | |
|------------------------|-----------------|------|-----------------|------|------------------|------|------------------|------|------------------|------|------------------|------|------------------|------|-------------------|------|
| Speed (RPM) | 4" Hg. 658 Torr | | 8" Hg. 557 Torr | | 12" Hg. 455 Torr | | 16" Hg. 354 Torr | | 20" Hg. 252 Torr | | 24" Hg. 150 Torr | | 26" Hg. 100 Torr | | 26.4" Hg. 89 Torr | |
| | acfm | HP | acfm | HP | acfm | HP | acfm | HP | acfm | HP | acfm | HP | acfm | HP | acfm | HP |
| 1750 | 248 | 10.5 | 250 | 11.9 | 250 | 13.0 | 248 | 13.5 | 240 | 14.0 | 217 | 14.0 | 184 | 14.0 | 170 | 14.0 |
| 1450 | 214 | 7.1 | 215 | 8.6 | 209 | 9.5 | 207 | 10.1 | 198 | 10.5 | 179 | 10.5 | 153 | 10.5 | 145 | 10.5 |
| 1150 | 152 | 4.0 | 153 | 5.7 | 155 | 6.6 | 151 | 7.2 | 142 | 7.5 | 118 | 7.3 | 82 | 7.2 | 70 | 7.2 |

| Pump Model - LPH 50523 | | | | | | | | | | | | | | | | |
|------------------------|-----------------|------|-----------------|------|------------------|------|------------------|------|------------------|------|------------------|------|------------------|------|-------------------|------|
| Speed (RPM) | 4" Hg. 658 Torr | | 8" Hg. 557 Torr | | 12" Hg. 455 Torr | | 16" Hg. 354 Torr | | 20" Hg. 252 Torr | | 24" Hg. 150 Torr | | 26" Hg. 100 Torr | | 26.4" Hg. 89 Torr | |
| | acfm | HP | acfm | HP | acfm | HP | acfm | HP | acfm | HP | acfm | HP | acfm | HP | acfm | HP |
| 1750 | 315 | 14.1 | 325 | 15.6 | 330 | 16.6 | 327 | 17.5 | 318 | 17.6 | 288 | 17.2 | 250 | 16.7 | 235 | 16.5 |
| 1450 | 255 | 9.0 | 260 | 10.5 | 265 | 11.7 | 265 | 12.5 | 260 | 13.0 | 237 | 12.8 | 197 | 12.5 | 180 | 12.4 |
| 1150 | 182 | 5.0 | 186 | 6.5 | 187 | 7.9 | 184 | 8.7 | 173 | 9.0 | 142 | 9.0 | 90 | 8.6 | 70 | 8.5 |

This data represents average values for pumps in standard materials. Capacity in actual cubic feet per minute at 68°F (20°C) using 60°F (16°C) water as a service liquid. Vacuum in inches Hg. Barometric pressure at sea level 29.92" Hg. abs. (760 Torr).

All performance data per HEI standards; subject to SIHI standard tolerances.

All data subject to change without notice.

Printed in U.S.A.

ENGINEERING DATA

| PUMP MODEL | 50518 | 50523 |
|----------------------------------------------------------|-----------|-----------|
| Gas Conn. Size/Rating (U) | 2½"/150RF | 2½"/150RF |
| Service Liq. Line Size/Rating (U _B) | 1"/NPT | 1"/NPT |
| Cont. Drain Size/Rating (U _{se}) | ¼"/NPT | ¼"/NPT |
| Motor (@ 1750 rpm) HP | 15 | 20 |
| Bare Pump Wt. (lb) | 295 | 340 |
| 4 Direct Dr. Basemount (lb) | 671 | 723 |
| Min. V-Belt Sheave Dia. | 7.9" | 9.8" |
| Separator Model-XBA | 2518 | 2523 |
| Separator Size - Recirc. (Gal.) | 24 | 24 |
| 1&2 Norm. Max. Gas Temp. (°F) | 200 | 200 |
| 2 Max. Service Liq. Temp. (°F) | 180 | 180 |
| 3 Sound Level (dBA) | 68 | 68 |
| Moment of Inertia Wr ² (lb. ft ²) | 4.97 | 5.92 |
| Casing Max. Working Pressure (psi) | 30 | 30 |
| Pneumatic Test Pressure (psig) | 15 | 15 |

1. Max. gas temperature with saturated gases.
2. Higher temperatures possible on request.
3. At 3 ft., 1750 RPM w/o motor (not certified).
4. Basemount includes pump, motor, coupling, guard and base.

SERVICE LIQUID RATES (USGPM)

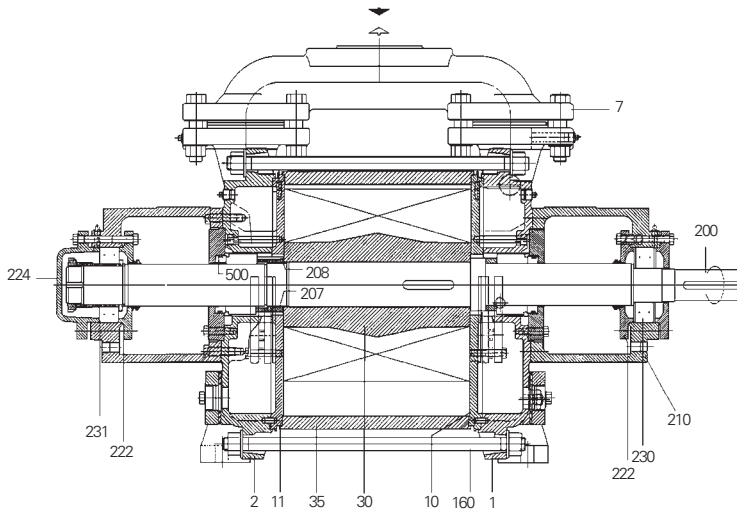
| PUMP MODEL-LPH 50518 | | | | | | | | | | | | | | | |
|----------------------|-------------------|-----|-----|--------------------|-----|-----|--------------------|-----|-----|--------------------|-----|-----|--------------------|-----|-----|
| Pump Speed | 8" Hg 557 Torr | | | 12" Hg 455 Torr | | | 16" Hg 354 Torr | | | 20" Hg 252 Torr | | | 26" Hg 100 Torr | | |
| | A | B | C | A | B | C | A | B | C | A | B | C | A | B | C |
| 1750 | | 2.7 | 1.7 | | 3.3 | 2.2 | | 3.7 | 2.4 | | 4.0 | 2.6 | | 4.3 | 2.7 |
| 1450 | 4.8 | 2.3 | 1.3 | 6.4 | 2.8 | 1.8 | 7.8 | 3.1 | 1.9 | 9.0 | 3.4 | 2.7 | 10.5 | 3.5 | 2.7 |
| 1150 | | 1.8 | 0.8 | | 2.2 | 1.3 | | 2.5 | 1.5 | | 2.7 | 1.6 | | 2.7 | 1.6 |

| PUMP MODEL-LPH 50523 | | | | | | | | | | | | | | | |
|----------------------|-------------------|-----|-----|--------------------|-----|-----|--------------------|-----|-----|--------------------|-----|-----|--------------------|-----|-----|
| Pump Speed | 8" Hg 557 Torr | | | 12" Hg 455 Torr | | | 16" Hg 354 Torr | | | 20" Hg 252 Torr | | | 26" Hg 100 Torr | | |
| | A | B | C | A | B | C | A | B | C | A | B | C | A | B | C |
| 1750 | | 2.2 | 1.7 | | 3.1 | 2.3 | | 3.8 | 2.6 | | 4.3 | 2.9 | | 4.6 | 3.0 |
| 1450 | 3.1 | 2.0 | 1.4 | 5.0 | 2.7 | 1.9 | 6.5 | 3.2 | 2.1 | 8.4 | 3.7 | 2.4 | 10.2 | 3.9 | 2.4 |
| 1150 | | 1.6 | 0.7 | | 2.2 | 1.4 | | 2.6 | 1.7 | | 3.0 | 1.8 | | 3.1 | 1.8 |

Column 'A' is the flow in USGPM required - once through.
 Column 'B' is the make-up flow required when make-up water is 5°C (9°F) cooler than service water.
 Column 'C' is the make-up flow when make-up water is 10°C (18°F) cooler than service water.

Note: The service liquid supply pressure may vary with pump speed and vacuum level. Please consult factory engineering department for additional information.

SECTIONAL



Standard rotation 'AB' (clockwise) viewed from driven end. 'AL' (counter clockwise) upon request.

PARTS LIST

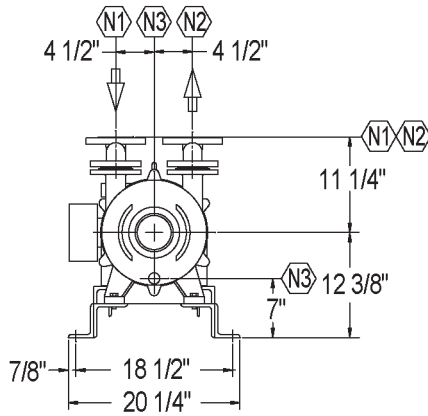
- | | | |
|---------------------------------|------------------------|----------------------|
| 1. Suction Cover | 35. Centerbody | 222. Bearing Cover |
| 2. Discharge Cover | 160. Tie Bolt Assembly | 224. Bearing Cover |
| 7. Suction & Discharge Manifold | 200. Shaft | 230. Roller Bearing |
| 10. Intermediate | 207. Impeller Nut | 231. Roller Bearing |
| 11. Intermediate | 208. Lockwasher | 500. Mechanical Seal |
| 30. Impeller | 210. Bearing Housing | |

MATERIALS

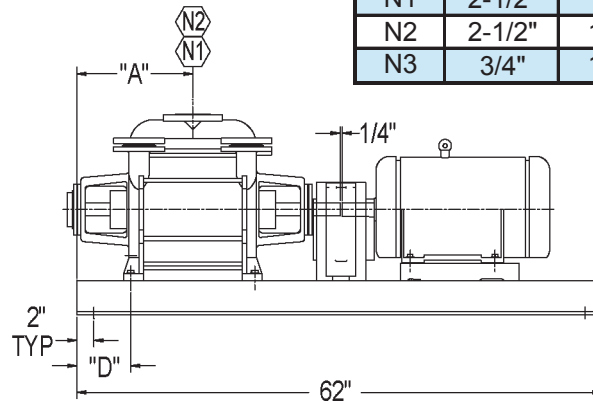
| ITEM | 0B | 4B |
|-------------------|------------------|------------------|
| Casing-Wetted | Cast Iron | 316 SS |
| Intermediates | Cast Iron | 316 SS |
| Impeller(s) | Ductile iron | 316 SS |
| Shaft | 420 SS QT | 316 SS |
| Shaft Sleeves | N/A | N/A |
| Shaft Sealing | AAB ⁵ | AAB ⁵ |
| Casing-Non Wetted | Cast Iron | Cast Iron |

⁵ AAB = single bellows seal with viton elastomers, carbon vs SiC faces

BASE ASSEMBLY



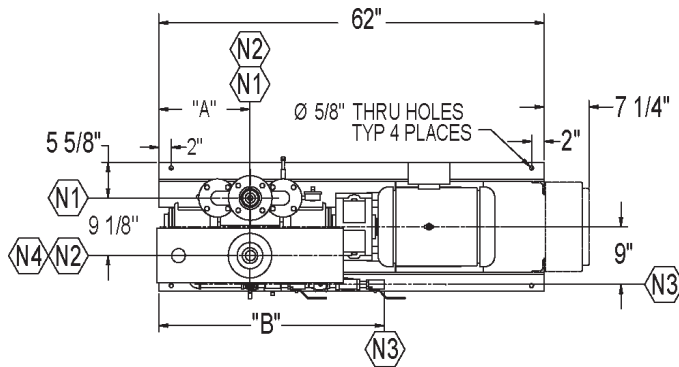
| Nozzle Schedule | | | | |
|-----------------|--------|------|-------------|----------------|
| Nozzle | Size | Qty. | Description | Service |
| N1 | 2-1/2" | 1 | FNPT | Suction |
| N2 | 2-1/2" | 1 | 150# RF | Vent |
| N3 | 3/4" | 1 | FNPT | Service Liquid |



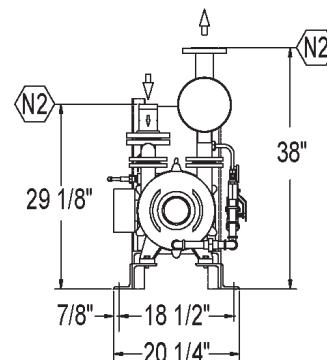
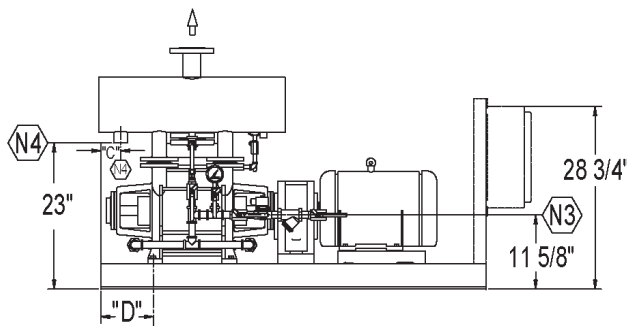
| SIHI Pump Model No. | Motor HP/RPM | Motor Frame Size | Baseplate | Approx Shipping Weight | A | D |
|---------------------|--------------|------------------|-----------|------------------------|---------|--------|
| LPHR-50518 | 15 / 1750 | 254T F1 | B2208-33 | 698 | 14-3/4" | 8-1/2" |
| LPHR-50523 | 20 / 1750 | 256T F1 | B2208-33 | 792 | 13-5/8" | 6-3/8" |

Dimensions subject to change, consult factory for certified drawing if required.

XBAR STANDARD PACKAGE



| Nozzle Schedule | | | | |
|-----------------|--------|------|-------------|----------------|
| Nozzle | Size | Qty. | Description | Service |
| N1 | 2-1/2" | 1 | FNPT | Suction |
| N2 | 2-1/2" | 1 | 150# RF | Vent |
| N3 | 3/4" | 1 | FNPT | Service Liquid |
| N4 | 1-1/2" | 1 | MNPT | Overflow |

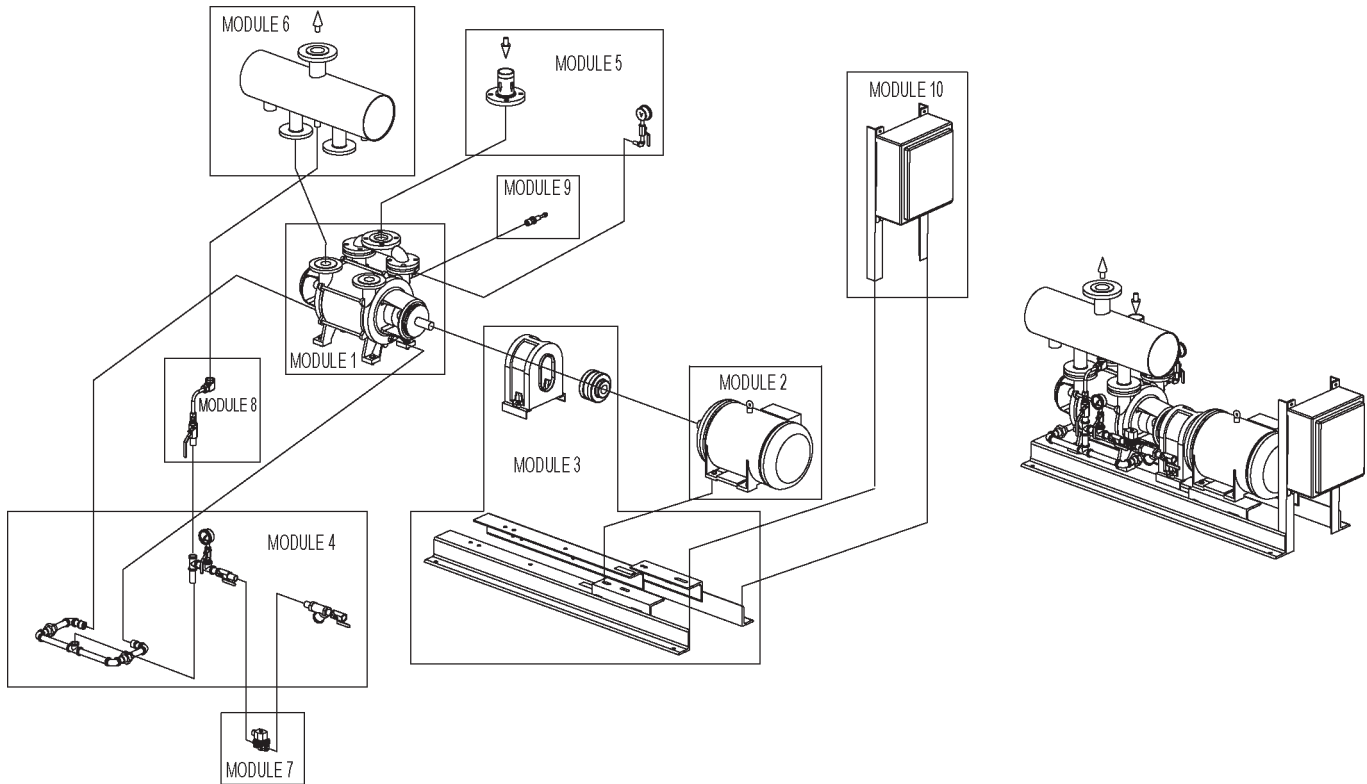


| System Model No. | Motor HP/RPM | Motor Frame Size | Xba Tank Model No. | Baseplate | Approx Shipping Weight | A | B | C | D |
|------------------|--------------|------------------|--------------------|-----------|------------------------|---------|---------|--------|--------|
| XBAR-50518 | 15 / 1750 | 254T F1 | 2518 | B2208-33 | 824 | 14-3/4" | 37-1/4" | 3-1/8" | 8-1/2" |
| XBAR-50523 | 20 / 1750 | 256T F1 | 2523 | B2208-33 | 918 | 13-5/8" | 36-1/4" | 2-1/4" | 6-3/8" |

Dimensions subject to change, consult factory for certified drawing if required.

All data subject to change without notice.

XBAR STANDARD PACKAGE MODULAR CONSTRUCTION



| Pump Series: | | 50000 Series | | | |
|--------------|-------------------------------------------|-------------------------|------------------------------------------------------|-----------------------|-----------------------|
| Module | Description | Details | Module Standard Construction Options | | |
| Module 1 | Pump | Material | 0B | 4B | |
| Module 2 | Motor | HP | 15.0 | 20.0 | |
| | | RPM | 1750 | | |
| | | Enclosure | TEFC | EXPF | |
| | | Voltage | 208-230/460 | 575 | |
| | | Phase | 3 | | |
| Module 3 | Base Assembly | Base / Coupling / Guard | Rail Base & Flex Coupling & Guard to OSHA Guidelines | | |
| Module 4 | Service Liquid Line (less solenoid valve) | Valve / Piping | Bronze / CS | CS / CS | Stainless / Stainless |
| Module 5 | Inlet Vacuum Line | Valve / Piping | Bronze / CS | CS / CS | Stainless / Stainless |
| Module 6 | Discharge | Separator / Piping | CS / CS | Stainless / Stainless | |
| Module 7 | Solenoid Valve | Enclosure | NEMA 4 | NEMA 7 | |
| | | Voltage | 24VDC | 120V/60Hz | 110V/50Hz |
| | | Material | Bronze | Stainless Steel | |
| Module 8 | Recirculation Line | Valve / Tubing | Bronze / Bronze | CS / CS | Stainless / Stainless |
| Module 9 | Vacuum Relief Valve | Material | Bronze | Iron | Stainless Steel |
| Module 10 | Control Panel | Enclosure | NEMA 4 | NEMA 7 | |
| | | Voltage | 230 | 460 | 575 |

All data subject to change without notice.