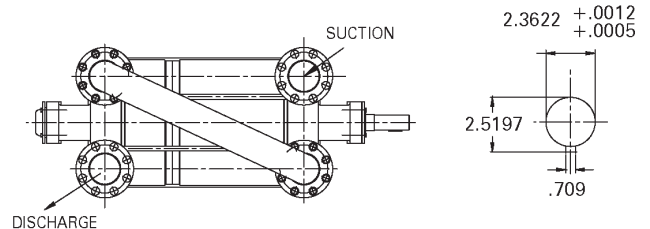
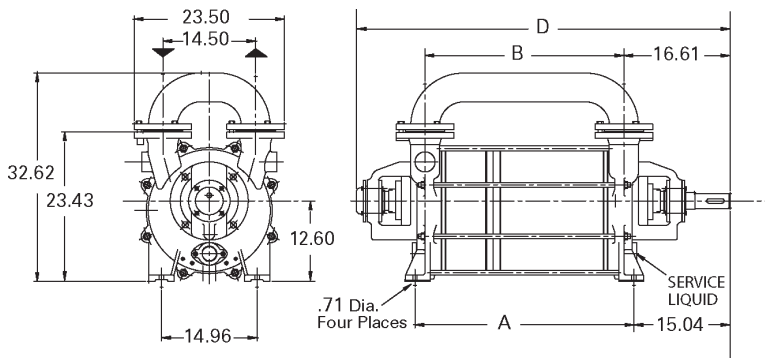


Dimensions (inches)

Pump Model	A	B	C	D
75320	24.41	21.26		48.62
75330	30.31	27.16		54.52
75340	34.25	31.10		58.46

For connection sizes/ratings and motor sizes refer to engineering data table on reverse.



For baseplate mounting, please obtain factory certified dimensions.

Capacity Table

Pump Model - LPH 75320														
Speed (RPM)	20" Hg. 252 Torr		22.5" Hg. 188 Torr		25" Hg. 125 Torr		27.5" Hg. 61.5 Torr		28" Hg. 49 Torr		28.7" Hg. 31 Torr		28.9" Hg. 25 Torr	
	acfm	HP	acfm	HP	acfm	HP	acfm	HP	acfm	HP	acfm	HP	acfm	HP
1150	515	47	545	48	570	48	530	44	490	44	375	44	340	44
975	470	34	500	33	515	32	480	30	455	29	365	29	335	29
880	420	31	445	31	460	30	430	28	405	28	315	28	295	28

Pump Model - LPH 75330														
Speed (RPM)	20" Hg. 252 Torr		22.5" Hg. 188 Torr		25" Hg. 125 Torr		27.5" Hg. 61.5 Torr		28" Hg. 49 Torr		28.7" Hg. 31 Torr		28.9" Hg. 25 Torr	
	acfm	HP	acfm	HP	acfm	HP	acfm	HP	acfm	HP	acfm	HP	acfm	HP
1150	745	60	770	59	830	58	730	55	665	55	470	55	400	55
975	670	47	700	46	740	45	675	41	615	40	455	40	390	40
880	610	37	635	38	670	37	600	35	535	35	400	35	380	35

Pump Model - LPH 75340														
Speed (RPM)	20" Hg. 252 Torr		22.5" Hg. 188 Torr		25" Hg. 125 Torr		27.5" Hg. 61.5 Torr		28" Hg. 49 Torr		28.7" Hg. 31 Torr		28.9" Hg. 25 Torr	
	acfm	HP	acfm	HP	acfm	HP	acfm	HP	acfm	HP	acfm	HP	acfm	HP
1150	890	75	940	76	995	76	955	74	890	72	650	72	525	72
975	800	51	850	51	930	50	905	46	840	45	600	45	510	45
880	655	46	701	45	761	42	766	39	700	38	533	38	432	38

This data represents average values for pumps in standard materials. Capacity in cubic feet per minute free air at 68°F (20°C) using 60°F (15°C) water as a service liquid. Vacuum in inches HG. Barometric pressure at sea level 29.92". Hg. abs. (760 Torr). All performance data per HEI standards; subject to Sterling SIHI standard tolerances.

All data subject to change without notice.

03.LPH 75000.01

Printed in U.S.A.



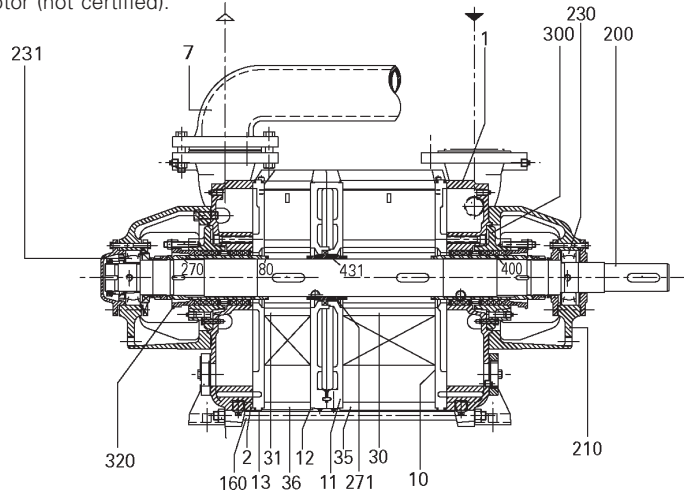
DATA-LPH 75000-2018MAR19 © 2018 Flowserve Canada Corp.

ENGINEERING DATA

PUMP MODEL	75320	75330	75340
Gas Conn. Size/Rating	4"/150# RF	4"/150# RF	4"/150# RF
Service Liq. Line Size/Rating	2"/NPT	2"/NPT	2"/NPT
Cont. Drain Qty/Size/Rating	¾"/NPT	¾"/NPT	¾"/NPT
Motor (@ 1150 rpm) HP	60	75	100
Bare Pump Wt. (lb)	1000	1250	1450
Pump & Motor Unit Weight (lb)	2504	2829	3477
Min. V-Belt Sheave Dia.	12.4"	14.0"	14.0"
Separator Model - XBA	7500	7500	7500
Separator Size - Recirc. (USG)	60	60	60
1/2) Norm. Max. Gas Temp. (°F)	200	200	200
2) Max. Service Liq. Temp. (°F)	180	180	180
3) Sound Level @ 27.6 HgV (dBA)	80	80	80
Moment of Inertia Wr ² (lb. ft ²)	37.2	52.8	62.8
Casing Max. Working Pressure (psi)	30	30	30
Pneumatic Test Pressure (psig)	15	15	15

- 1.) Max. gas temperature with saturated gases.
- 2.) Higher temperatures possible on request.
- 3.) At 3 ft., 1150 RPM w/o motor (not certified).

SECTIONAL



PARTS LIST

- | | | | |
|--------------------|----------------|------------------------|--------------------------|
| 1. Suction Cover | 30. Impeller | 160. Tie Bolt Assembly | 271. Shaft Sleeve |
| 2. Discharge Cover | 31. Impeller | 200. Shaft | 300. Stuffing box flange |
| 7. Bypass Manifold | 35. Centerbody | 210. Bearing Housing | 320. Gland |
| 10. Intermediate | 36. Centerbody | 230. Bearing | 400. Packing |
| 11. Intermediate | 80. O-ring | 231. Bearing | 431. Packing Ring |
| 12. Intermediate | 87. Spacer | 270. Shaft Sleeve | |
| 13. Intermediate | | | |

MATERIALS

ITEM	0B	4B
Casing - Wetted	Cast Iron	316 SS
Intermediates	Cast Iron	316 SS
Impeller(s)	Ductile Iron	316 SS
Shaft ⁴	420 SS QT	420 SS QT
Shaft Sleeves	420 SS	316 SS
Shaft Sealing	ADB ⁵	ADB ⁵
Casing- Non Wetted	Cast Iron	Cast Iron

⁴ Shaft is a non-wetted part. ⁵ ADB = single o-ring pusher seal with viton o-rings, carbon vs. SiC faces

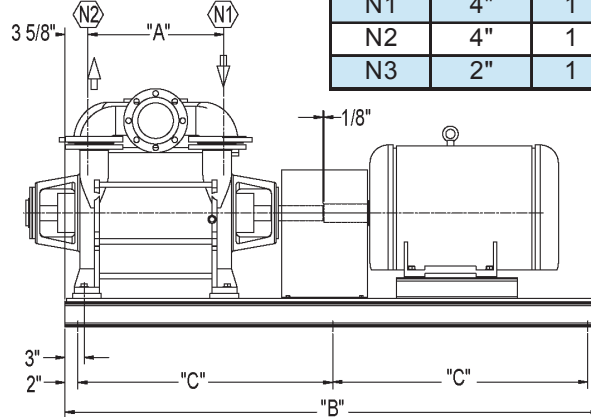
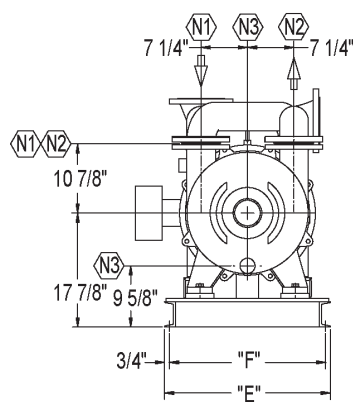
SERVICE LIQUID RATES (USGPM)

PUMP MODEL - 75320															
Speed (RPM)	20" Hg 252 Torr			25" Hg 125 Torr			28" Hg 49 Torr			28.7" Hg 31 Torr			28.9" Hg 25 Torr		
	A	B	C	A	B	C	A	B	C	A	B	C	A	B	C
1150		8.8	6.5		10	7.3		11	7.3		11	7.4		11	7.5
975	14	7.7	5.4	18	8.6	5.6	21	8.7	5.5	22	8.8	5.5	23	9.0	5.6
880		7.4	5.1		8.3	5.4		8.5	5.4		8.7	5.4		8.8	5.4
PUMP MODEL - 75330															
1150		11	7.8		12	8.3		12	8.6		13	8.8		13	8.8
975	16	9.6	6.8	19	10	7.2	22	11	7.2	24	11	7.2	24	11	7.2
880		8.7	5.9		9.5	6.3		9.8	6.3		10	6.5		10	6.5
PUMP MODEL - 75340															
1150		11	8.7		13	9.8		15	10		15	11		15	11
975	16	9.9	7.2	20	11	7.8	24	12	7.8	25	12	7.9	26	12	8.0
880		9.7	6.9		11	7.5		12	7.5		12	7.6		12	7.7

Column 'A' is the flow in USGPM required - once through.
 Column 'B' is the make-up flow required when make-up water is 9°F (5°C) cooler than service water.
 Column 'C' is the make-up flow when make-up water is 18°F (10°C) cooler than service water.

Standard rotation 'AB' (clockwise) viewed from driven end. 'AL' (counter clockwise) upon request.

BASE ASSEMBLY

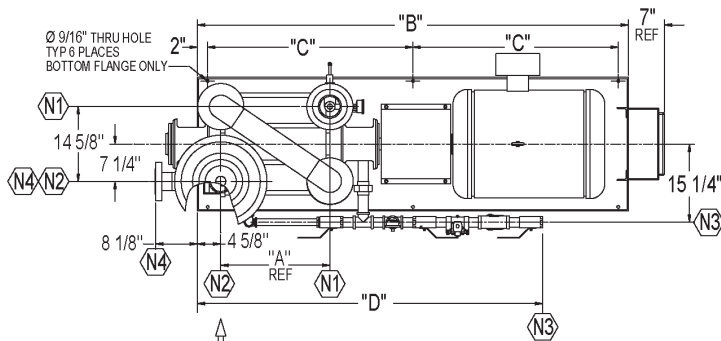


Nozzle Schedule				
Nozzle	Size	Qty.	Description	Service
N1	4"	1	150# RF FLG	Suction
N2	4"	1	150# RF FLG	Vent
N3	2"	1	FNPT	Service Liquid

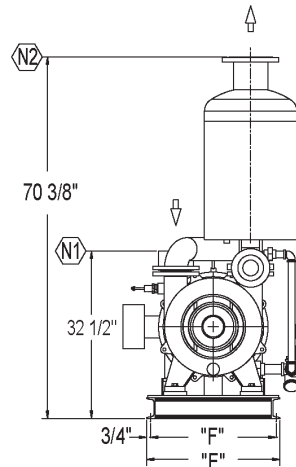
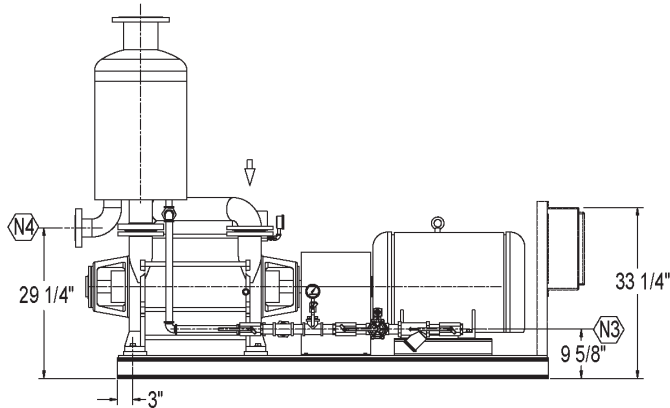
SIHI Pump Model No.	Motor HP/RPM	Motor Frame Size	Baseplate	Approx Shipping Weight	A	B	C	E	F
LPHR-75320	60 / 1150	404T F1	B708-11	2684	21-1/4"	84"	40"	26"	24-1/2"
LPHR-75330	75 / 1150	405T F1	B708-16	2969	27-1/8"	90"	43"	26"	24-1/2"
LPHR-75340	100 / 1150	444T F1	B756-4	3567	31-1/8"	102"	49"	33"	31-1/2"

Dimensions subject to change, consult factory for certified drawing if required.

XBAR STANDARD PACKAGE



Nozzle Schedule				
Nozzle	Size	Qty.	Description	Service
N1	4"	1	150# RF FLG	Suction
N2	6"	1	150# RF FLG	Vent
N3	1-1/2"	1	FNPT	Service Liquid
N4	3"	1	150# RF FLG	Overflow

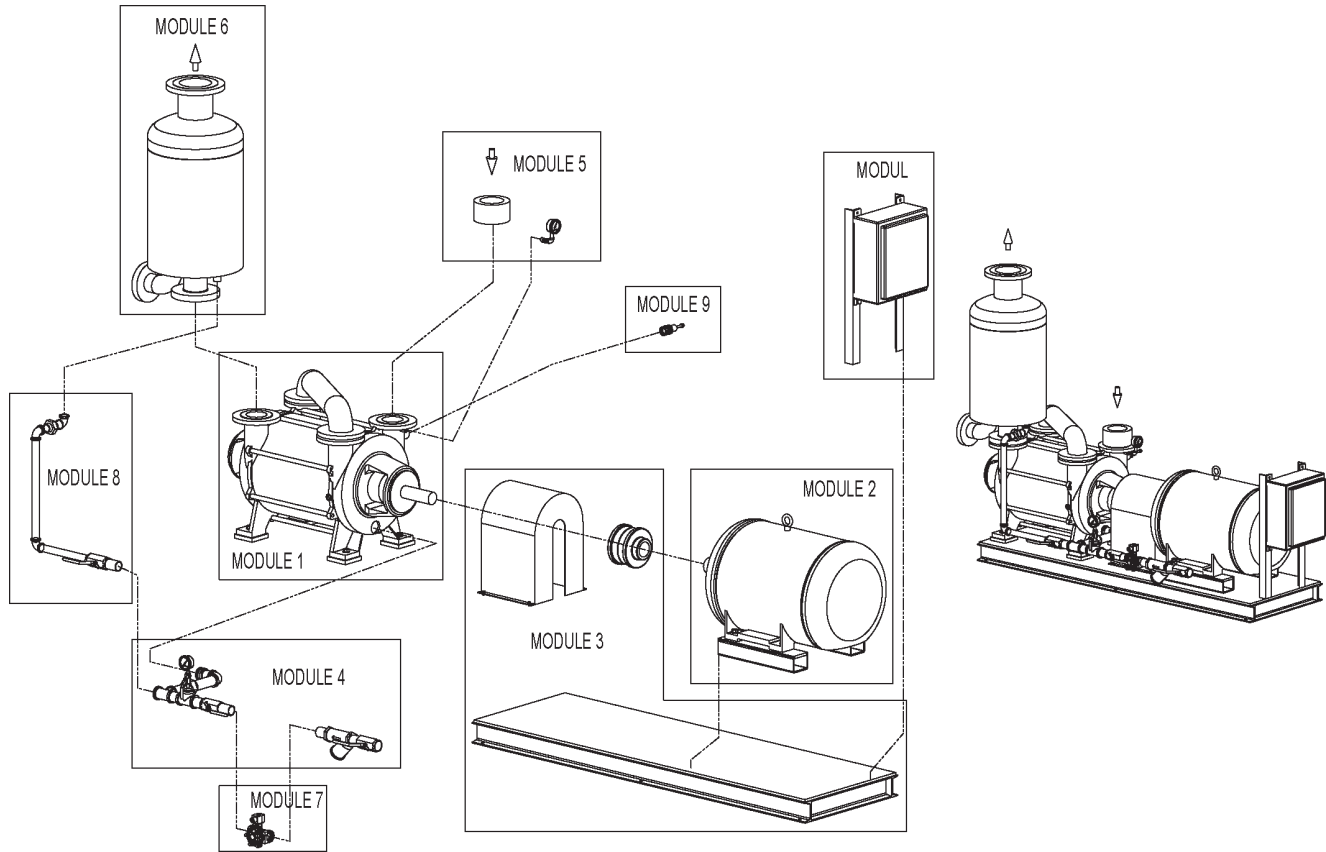


System Model No.	Motor HP/RPM	Motor Frame Size	Xba Tank Model No.	Baseplate	Approx Shipping Weight	A	B	C	D	E	F
XBAR-75320	60 / 1150	404T F1	7500	B708-11	2854	21-1/4"	84"	40"	67-1/4"	26"	24-1/2"
XBAR-75330	75 / 1150	405T F1	7500	B708-16	3139	27-1/8"	90"	43"	70-1/4"	26"	24-1/2"
XBAR-75340	100 / 1150	444T F1	7500	B756-4	3737	31-1/8"	102"	49"	72-1/4"	33"	31-1/2"

Dimensions subject to change, consult factory for certified drawing if required.

All data subject to change without notice.

XBAR STANDARD PACKAGE MODULAR CONSTRUCTION



Pump Series:		75000 Series			
Module	Description	Details	Module Standard Construction Options		
Module 1	Pump	Material	0B		4B
Module 2	Motor	HP	60.0	75.0	100.0
		RPM	1150		
		Enclosure	TEFC		EXPF
		Voltage	208-230/460		575
		Phase	3		
Module 3	Base Assembly	Base / Coupling / Guard	Channel Base & Flex Coupling & Guard to OSHA Guidelines		
Module 4	Service Liquid Line (less solenoid valve)	Valve / Piping	Bronze / CS	CS / CS	Stainless / Stainless
Module 5	Inlet Vacuum Line	Valve / Piping	Bronze / CS	CS / CS	Stainless / Stainless
Module 6	Discharge	Separator / Piping	CS / CS		Stainless / Stainless
Module 7	Solenoid Valve	Enclosure	NEMA 4		NEMA 7
		Voltage	24VDC	120V/60Hz	110V/50Hz
		Material	Bronze		Stainless Steel
Module 8	Recirculation Line	Valve / Tubing	Bronze / Bronze	CS / CS	Stainless / Stainless
Module 9	Vacuum Relief Valve	Material	Bronze	Iron	Stainless Steel
Module 10	Control Panel	Enclosure	NEMA 4		NEMA 7
		Voltage	230	460	575

All data subject to change without notice.